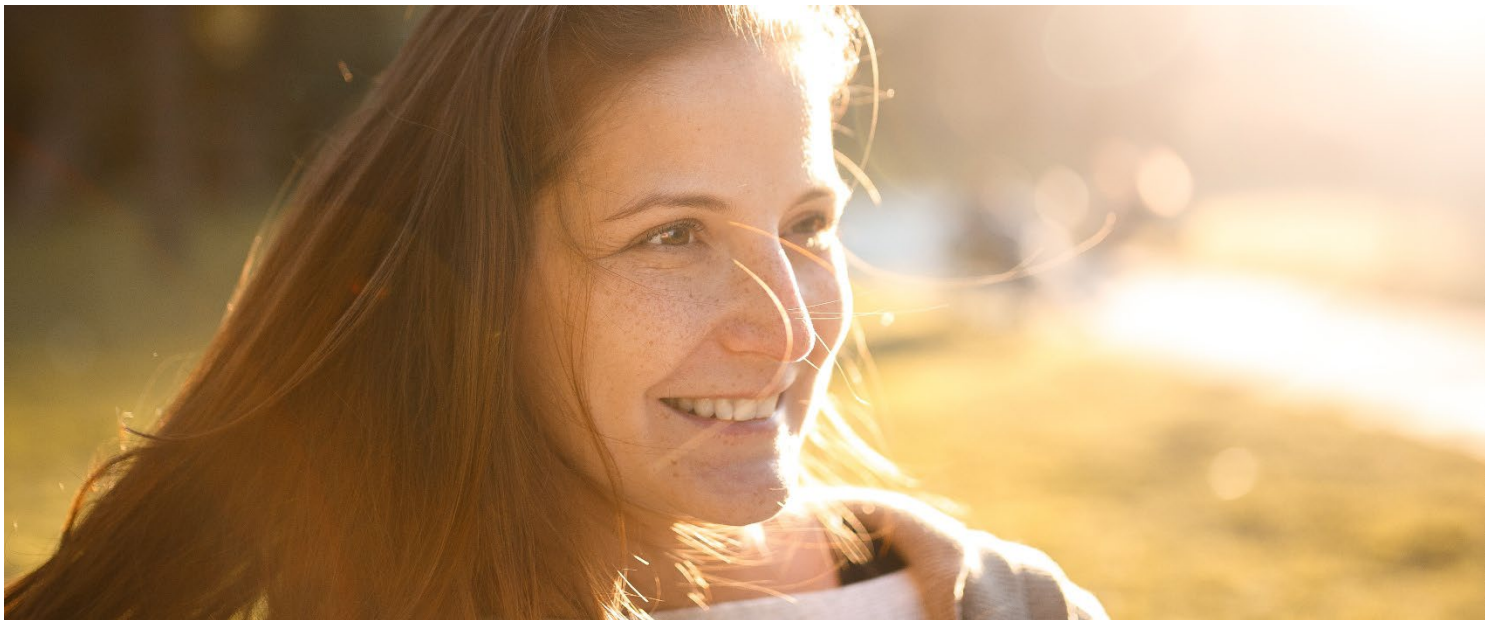


REPORT

2024/2025 Annual Statistical Report



Version
1.0

Date
Monday, December 1, 2025

Classification
Public

Contents

About HiSET	4
About PSI	4
About ETS	4
About ITP	5
Test Content	5
Overview	6
The HiSET Exam	6
Table 1. Number of Test Items and Time Limits	6
Scoring the HiSET Exam	7
Explanation of the Scaled Scores	7
Samples Reported	8
State Policies	8
HiSET Annual Report	10
The Standard Setting	10
Table 2a. Examinees Who Took and Passed Individual Tests in English	11
Table 2b. Examinees Who Took and Passed Individual Tests in Spanish	13
Table 3a. Number of Examinees Tested in English in 2024/2025 reporting year	15
Table 3b. Number of Examinees Tested in Spanish in the 2024/2025 reporting year	16
Table 4a. Number of Batteries Completed in English in the 2024/2025 reporting year	17
Table 4b. Number of Batteries Completed in Spanish in the 2024/2025 reporting academic year	18
Table 5a. Batteries Completed and Passed in English in the 2024/2025 reporting year	19
Table 5b. Batteries Completed and Passed in Spanish in the 2024/2025 reporting year completely	21
Table 6. Previous Years Failed Completers Who Passed in the 2024/2025 reporting year	23
Table 7. Means, Standard Deviations, and Percentage of Completers by Age Group, by States, and Total	24
Table 8. Percentage of Completers by Gender, by States, and Total	25
Table 9. Completers with Reported Hispanic Background	26
Table 10. Completers with Reported Race by States and Total	27
Table 11. Completers with Reported Education Level by States and Total	29
Table 12. Completers with Reported Mother's Education Level by States and Total	30
Table 13. Completers with Reported Father's Education Level by States and Total	31
Table 14. Completers with Reported Employment Status by States and Total	32
Table 15. Completers with Reported Reasons for Taking the Test by States and Total	33

Table 16. Completers with Reported Ways of Preparing for the Test by States and Total	35
Table 17a. Reading Formats Administered	36
Table 17b. Writing Formats Administered	37
Table 17c. Math Formats Administered	38
Table 17d. Science Formats Administered	39
Table 17e. Social Studies Formats Administered	40
Table 18. Summary Statistics for Individual Tests	41
Table 19. Summary Statistics for Examinees Completing all Five Tests (The Full Battery)	43
Table 20. Battery Passers with Reported Reason for Testing	45
Table 21. Battery Summary Statistics for Examinees Passing on Their First Attempt	46
Table 22. Battery Passing Rates by Reported Age for Examinees Passing on Their First Attempt	47
Table 23. Battery Passing Rates by Reported Gender for Examinees Passing on Their First Attempt	48
Table 24. Battery Passing Rates by Reported Hispanic Background for Examinees Passing on Their First Attempt	49
Table 25. Battery Passing Rates by Reported Races for Examinees Passing on Their First Attempt	50
Table 26. Year to Year Comparison of Examinees	51

About HiSET

Some individuals who seek a high school credential may lack the opportunity to experience a traditionally structured high school teaching and learning environment. The HiSET Program seeks to help these individuals identify, acquire, and demonstrate the knowledge and skills that they will need to succeed in postsecondary education and in the workplace.

The *HiSET®* Program was originally co-developed by Educational Testing Service (ETS®) and Iowa Testing Programs (ITP) in furtherance of ETS's mission *to provide innovative and meaningful measurement solutions that improve teaching and learning, expand educational opportunities, and inform educational policy.*

In late 2021, HiSET was purchased by PSI Services, LLC as an extension of its mission *to help people meet their potential.* On a practical level, given PSI's strong presence in the US domestic certification market, PSI believes that there is considerable potential to grow the program, both through increased adoption by states and greater uptake among test takers, as well as exploiting synergies and broadening the range of associated products and services on offer from PSI's wider portfolio.

About PSI

For more than 70 years, PSI has provided Assessment and Talent Management solutions to a range of private and public sector organizations both in the US and internationally. Employers, governments, professional associations, certifying and licensing bodies, and leading educational institutions trust PSI to deliver on its mission of helping people succeed through testing excellence, including test development, administration, multi-modal delivery, and licensure management services.

On January 25, 2024, ETS acquired PSI. This partnership combines ETS's expertise as the world's largest private educational measurement organization with PSI's global leadership in test development and delivery for workforce certification and licensure. Together, ETS and PSI administer nearly 50 million tests annually across more than 200 countries and territories, supporting individuals on their paths to success.

About ETS

Founded as a non-profit in 1947, ETS advances quality and equity in education for people worldwide by creating assessments based on rigorous research. ETS serves individuals, educational institutions, and government agencies by providing

customized solutions for teacher certification; English language learning; and elementary, secondary, and postsecondary education — as well as by conducting education research, analysis, and policy studies. ETS develops, administers, and scores more than 50 million tests annually — including PRAXIS®, the GRE® General and Subject Tests, and the TOEFL® and TOEIC® tests — in more than 160 countries, at over 9,000 locations worldwide.

About ITP

ITP is a non-profit research, development, and outreach unit in the College of Education at the University of Iowa. ITP's mission is to pursue:

- research that improves the practice of educational measurement
- design and development of assessments for a variety of purposes and audiences including educators; federal, state, and local governments; and academic institutions
- outreach that delivers assessment results and supports the use of assessment information by local, state, national, and international audiences

Test Content

The HiSET measures knowledge and skills in five subject areas: Language Arts – Reading, Language Arts – Writing, Mathematics, Science, and Social Studies.

Overview

The HiSET Program has been in operation since January 2014. This report provides volume and test performance information for examinees who took the HiSET between July 1, 2024, and June 30, 2025. The intent of this report is to help HiSET examinees, score users, and policy makers understand HiSET scores and to encourage appropriate score interpretation and use.

The HiSET Exam

HiSET examinees test in five content areas: Reading (Language Arts – Reading), Writing (Language Arts – Writing), Mathematics, Science, and Social Studies. The Test at a Glance documents, available in [English](#) or [Spanish](#), are available for download on the [HiSET Website](#) — provide descriptions of the specifications behind current HiSET forms. Each subject-area test produces a score on a 1 – 20 reporting scale. We used standard setting studies (Tannenbaum & Reese, 2014) to recommend the minimum test scores (i.e., cut scores) needed for examinees to be considered qualified enough to earn a high school equivalency certificate. The tests consist of multiple-choice items, except for a direct writing task associated with the Writing test. Table 1 displays the number of items and time limits associated with each test.

Table 1. Number of Test Items and Time Limits

CONTENT AREA	NUMBER OF ITEMS	NUMBER OF MINUTES
Language Arts – Reading	50	65
Language Arts – Reading (Spanish)	50	80
Language Arts – Writing	60 + essay	120
Mathematics	55	90
Science	60	80
Social Studies	60	70

Scoring the HiSET Exam

With the exception of the essay portion of the Writing test, HiSET item responses receive a score of either correct or incorrect; and the sum of the correct responses becomes the raw score. There is no penalty for answering incorrectly. Raw scores on the Mathematics, Reading, Science, and Social Studies tests are converted directly to scores on the 1 – 20 reporting scale. In Writing, the scoring and scaling procedures differ slightly from the other four subtests due to having two distinct sections: the first section consists of 50 objectively scored multiple-choice items, and the second is an essay. Both sections are first scored and scaled independently. Number-correct scores on the 50-item multiple-choice section are converted to a 1-14 scale (rather than a 1-20 scale). The essay score is reported using a 0-6 scale that ranges from “little or no skill” to “proficient skill.” The total Writing scores are then computed as the sum of the two sections, placing them on the standard 1-20 scale.

Explanation of the Scaled Scores

Each of the five tests in the HiSET battery is scored on a scale of 1 – 20. In order to pass, an examinee must do all three of the following:

- achieve a score of at least 8* on each of the five individual tests.
- score at least 2 out of 6 on the essay portion of the Writing test.
- have a total combined score on all five subject tests (Battery) of at least 45.

*** 1) Minimum passing score is based on HiSET “pass” cut score requirements. Credential issuing agencies may set their own requirements. The pass rate data calculated in this report is calculated based on the HiSET “pass” score requirement. 2) The total Writing score is the sum of the multiple-choice section and the essay section. An examinee must achieve a total score of at least 8 as well as an essay score of at least 2 to pass the Writing test.**

Samples Reported

The samples in this report sometimes refer to examinees who have taken individual tests; and sometimes the samples refer to completers who have taken the full battery of tests. The 2024/2025 reporting year is defined as July 1, 2024 to June 30, 2025. Descriptions of the samples reported are provided below.

Language. All samples unless otherwise noted are composed of both English and Spanish examinees. For battery tables, completers should have taken all five tests in Spanish to be considered Spanish completers.

Individual Tests. Tables which include test-specific information are based on the sample of examinees that have attempted the specific test. These tables report examinee first attempt and best attempt to pass the test from July 1, 2024 to June 30, 2025.

Number of Examinees Tested. Tables reporting number of examinees tested provide a count of unique examinees attempting any individual test from July 1, 2024 to June 30, 2025.

Battery Completion. Tables which include information about the battery consist of only examinees that have completed all five individual HiSET subtests — however, completers have not necessarily passed the battery or any individual test. A “completer” refers to an examinee that has completed the final test of their battery from July 1, 2024 to June 30, 2025.

Battery Pass. Tables which include information about battery passers, consist of only examinees who have completed and passed the final test of their battery from July 1, 2024 to June 30, 2025.

Examinee State. For the purposes of assigning examinees to a state, a completer is considered completed only in the state in which he or she most recently tested.

Identifying Questions. For certain identifying questions, examinees had the option to expressly indicate that they did not wish to provide a response, or to simply refrain from responding at all. Response rates reported include those who expressly indicated that they did not wish to respond. The percentages for responses reported in the tables, including those who expressly chose not to respond, sum to 100 percent.

Trend Data. In addition to the data reported for July 1, 2024 to June 30, 2025, trend data comparing results for 2020 through 2024 are summarized in Table 26.

State Policies

State testing policies can be found at the following website:

<https://hiset.org/test-takers-requirements/#find-your-state>

HiSET Annual Report

The Standard Setting

Standard-setting studies (Tannenbaum & Reese, 2014) were conducted in 2014 to recommend minimum test scores (cut scores) needed to be considered qualified-enough to earn a high school equivalency certificate. These recommendations were shared with the HiSET Governing Board along with other data to inform decisions about where to set the operational cut scores; these other sources of data included the correspondence between HiSET scores and scores on the GED and the ACT, and previous passing rates on the HiSET test. Based on a thoughtful and inclusive review and discussion, the recommended cut scores were lowered. Adjustments to recommended cut scores often occur to better align cut scores with their intended use (Geisinger & McCormick, 2010). This practice is consistent with the understanding that the process of setting standards is similar to forming a policy, where the goal is to establish a reasonable and appropriate decision-rule (Cizek & Bunch, 2007; Kane, 2001; Kane & Tannenbaum, 2013).

Cizek, G. J., & Bunch, M.B. (2007). *Standard setting: A guide to establishing and evaluating performance standards on tests*. Thousand Oaks, CA: Sage.

Geisinger, K. F., & McCormick, C.A. (2010). Adopting cut scores: Post-standard-setting panel considerations for decision makers. *Educational Measurement: Issues and Practice*, 29, 38-44.

Kane, M. T. (2001). So much remains the same: Conception and status of validation in setting standards. In G. J. Cizek (Ed.), *Setting performance standards: Concepts, methods, and perspectives* (pp. 53-88). Mahwah, NJ: Lawrence Erlbaum.

Kane, M.T., & Tannenbaum, R.J. (2013). The role of construct maps in standard setting. *Measurement: Interdisciplinary Research & Perspectives*, 11, 177-180.

Tannenbaum, R.J., & Reese, C.M. (2014). *Recommending Passing Scores for the High School Equivalency Test (HiSET®)* (RM 14-06). Princeton, NJ: Educational Testing Service.

Table 2a. Examinees Who Took and Passed Individual Tests in English

EXAMINEES (ENGLISH)		READING		WRITING		MATH		SCIENCE		SOCIAL STUDIES	
State	Sample	Number Tested	Passing Rate (%)	Number Tested	Passing Rate (%)	Number Tested	Passing Rate (%)	Number Tested	Passing Rate (%)	Number Tested	Passing Rate (%)
AS	First	14	28.6	8	.	19	31.6	15	53.3	11	45.5
AS	All	25	24.0	14	50.0	28	42.9	24	37.5	20	35.0
CA	First	5,210	76.1	4,341	84.8	4,486	70.1	4,525	86.7	4,865	86.9
CA	All	6,603	69.6	5,094	81.7	6,202	65.8	5,066	84.5	5,466	84.6
CO	First	223	83.9	196	85.7	200	90.0	204	98.0	199	93.0
CO	All	248	82.7	222	84.7	229	84.3	209	97.6	213	91.5
GA	First	238	74.4	194	80.9	202	63.9	206	84.0	218	83.9
GA	All	304	67.4	229	79.0	274	63.1	238	82.4	250	82.0
HI	First	324	71.6	287	76.7	271	62.0	279	82.4	277	73.3
HI	All	473	59.2	388	66.2	427	54.6	345	74.2	388	65.2
IA	First	2,578	87.0	2,263	89.6	2,314	84.4	2,253	94.9	2,376	92.5
IA	All	2,928	84.1	2,514	87.9	2,681	82.3	2,363	94.1	2,596	90.3
IL	First	310	66.5	238	71.0	256	59.4	253	76.7	268	76.5
IL	All	442	55.7	314	68.5	390	53.8	340	66.8	338	71.0
IN	First	3,433	82.0	3,197	84.3	3,340	76.4	3,341	89.8	3,416	87.8
IN	All	4,209	75.6	3,719	81.8	4,147	73.8	3,638	87.8	3,826	85.3
LA	First	3,879	77.3	3,545	84.3	3,610	70.3	3,609	87.9	3,620	86.4
LA	All	5,049	70.3	4,256	80.5	5,109	65.0	4,096	85.0	4,192	84.0
MA	First	2,936	69.2	2,385	80.8	2,611	67.1	2,524	85.3	2,594	83.4
MA	All	4,195	59.6	2,955	77.6	3,720	62.2	2,966	82.8	3,129	79.6
ME	First	1,170	88.4	988	91.9	948	85.2	990	96.5	1,069	94.9
ME	All	1,303	85.5	1,068	91.2	1,128	82.3	1,034	96.0	1,127	93.8
MH	First	11	9.1	5	.	8	.	7	.	9	.
MH	All	12	16.7	6	.	8	.	8	.	10	30.0
MI	First	2,209	49.0	1,684	60.4	2,163	45.2	2,001	65.5	2,078	67.8
MI	All	4,033	39.9	2,522	54.2	3,983	43.0	2,980	57.8	3,009	60.9
MN	First	25	68.0	24	83.3	26	92.3	29	100.0	27	96.3
MN	All	33	69.7	29	82.8	27	92.6	30	100.0	28	92.9
MO	First	6,597	81.9	5,992	84.8	6,043	73.3	6,236	89.8	6,280	87.5
MO	All	8,329	75.0	7,255	80.2	8,381	67.8	6,968	87.3	7,248	84.0
MS	First	1,732	68.7	1,420	74.6	1,826	66.2	2,041	83.1	2,121	78.1
MS	All	2,290	60.3	1,782	69.1	2,448	61.0	2,378	79.5	2,606	73.5
MT	First	1,665	86.4	1,489	86.1	1,551	78.0	1,574	91.6	1,594	89.7
MT	All	1,936	81.1	1,735	82.8	1,995	72.7	1,711	89.7	1,815	85.8
NC	First	3,112	75.2	2,427	83.1	2,617	72.5	2,641	88.0	2,813	85.9
NC	All	4,016	67.7	2,900	79.8	3,534	66.6	2,939	85.2	3,211	82.1
NH	First	734	86.4	636	88.2	629	73.4	644	91.6	662	89.3
NH	All	885	79.9	709	87.0	838	67.7	695	89.5	730	86.7

NM	First	1,212	78.5	1,102	83.7	1,124	64.3	1,162	88.1	1,179	84.9
NM	All	1,518	72.0	1,302	79.4	1,595	60.8	1,311	83.8	1,374	81.8
NV	First	1,563	76.6	1,360	84.9	1,420	69.7	1,411	86.2	1,446	86.4
NV	All	1,945	71.4	1,587	81.5	1,929	65.7	1,562	84.2	1,639	84.7
OH	First	296	81.1	243	88.5	242	77.3	249	94.0	284	89.1
OH	All	395	67.6	290	82.4	308	75.0	264	92.4	314	86.0
OK	First	1,952	84.2	1,597	86.4	1,699	73.5	1,792	90.7	1,873	89.7
OK	All	2,291	79.2	1,848	83.8	2,211	70.0	1,947	89.0	2,056	87.6
PA	First	607	78.7	454	83.0	503	70.8	495	89.3	518	88.2
PA	All	774	70.3	539	79.4	682	66.3	548	88.0	592	86.1
PW	First	4	.	4	.	5	.	4	.	6	.
PW	All	4	.	4	.	6	.	4	.	6	.
TN	First	1,739	66.0	1,713	77.6	1,917	63.1	5,257	84.2	5,263	83.3
TN	All	2,473	57.9	2,099	74.8	2,693	59.7	6,077	80.9	6,282	79.3
WV	First	1	.	1	.	0	.	0	.	1	.
WV	All	1	.	1	.	0	.	0	.	1	.
WY	First	837	89.2	757	90.0	766	82.2	806	94.5	799	92.7
WY	All	954	86.2	851	87.1	933	78.3	850	93.8	868	90.9
Total	First	44,611	77.1	38,550	83.1	40,796	70.9	44,548	87.3	45,866	85.7
Total	All	57,668	69.3	46,232	79.2	55,906	65.9	50,591	84.0	53,334	82.1

*Passing rates are not reported when samples are under 10.

Table 2b. Examinees Who Took and Passed Individual Tests in Spanish

EXAMINEES (SPANISH)		READING		WRITING		MATH		SCIENCE		SOCIAL STUDIES	
State	Sample	Number Tested	Passing Rate (%)	Number Tested	Passing Rate (%)	Number Tested	Passing Rate (%)	Number Tested	Passing Rate (%)	Number Tested	Passing Rate (%)
CA	First Attempt	2,641	69.3	2,302	79.5	2,309	64.2	2,337	77.2	2,496	82.7
CA	All Attempts	3,847	59.6	2,843	76.5	3,347	59.7	3,003	72.0	3,001	79.4
CO	First Attempt	24	50.0	23	78.3	23	52.2	11	45.5	3	.
CO	All Attempts	35	40.0	26	76.9	30	56.7	15	46.7	4	.
GA	First Attempt	2	.	0	.	0	.	1	.	1	.
GA	All Attempts	2	.	0	.	1	.	2	.	1	.
HI	First Attempt	6	.	7	.	7	.	8	.	7	.
HI	All Attempts	9	.	8	.	11	45.5	9	.	8	.
IA	First Attempt	42	85.7	42	92.9	34	67.6	46	84.8	44	88.6
IA	All Attempts	46	84.8	48	89.6	53	58.5	52	80.8	48	85.4
IL	First Attempt	17	76.5	16	93.8	7	.	8	.	5	.
IL	All Attempts	20	75.0	17	94.1	12	66.7	8	.	5	.
IN	First Attempt	102	73.5	94	84.0	97	67.0	97	74.2	101	81.2
IN	All Attempts	139	68.3	115	83.5	134	59.7	118	76.3	120	78.3
LA	First Attempt	134	61.2	105	76.2	101	63.4	104	75.0	110	82.7
LA	All Attempts	194	58.8	133	73.7	153	56.9	146	65.1	143	76.9
MA	First Attempt	281	47.7	216	62.0	234	40.2	232	66.8	265	61.5
MA	All Attempts	537	41.5	354	55.1	458	42.6	347	60.2	387	59.7
MI	First Attempt	33	42.4	34	58.8	29	31.0	34	50.0	33	51.5
MI	All Attempts	67	32.8	56	46.4	51	37.3	69	36.2	54	53.7
MN	First Attempt	2	.	1	.	1	.	1	.	1	.
MN	All Attempts	2	.	1	.	4	.	1	.	1	.
MO	First Attempt	41	63.4	31	67.7	31	48.4	34	61.8	30	66.7
MO	All Attempts	57	59.6	41	70.7	44	54.5	44	56.8	38	65.8
MS	First Attempt	7	.	7	.	11	72.7	8	.	10	70.0
MS	All Attempts	11	45.5	12	50.0	14	71.4	10	60.0	11	72.7
MT	First Attempt	10	100.0	11	72.7	8	.	8	.	6	.
MT	All Attempts	11	100.0	14	71.4	12	58.3	8	.	7	.
NC	First Attempt	309	63.8	234	79.5	211	73.9	254	77.2	298	78.2
NC	All Attempts	448	56.5	307	72.3	302	67.2	318	71.1	354	74.9
NH	First Attempt	3	.	3	.	3	.	3	.	3	.
NH	All Attempts	5	.	5	.	5	.	4	.	5	.
NM	First Attempt	168	70.2	151	67.5	139	61.9	153	74.5	160	82.5
NM	All Attempts	237	61.6	208	64.4	214	59.3	198	70.7	199	79.4
NV	First Attempt	65	75.4	69	82.6	55	69.1	63	81.0	58	84.5
NV	All Attempts	90	65.6	89	80.9	83	67.5	79	74.7	73	76.7
OH	First Attempt	4	.	3	.	0	.	3	.	1	.

OH	All Attempts	9	.	4	.	0	.	10	40.0	3	.
OK	First Attempt	266	67.3	226	77.0	236	61.4	247	78.1	230	83.0
OK	All Attempts	429	55.7	295	70.5	385	55.8	327	71.9	307	75.2
PA	First Attempt	145	58.6	104	75.0	110	66.4	117	77.8	130	73.8
PA	All Attempts	222	54.1	126	69.8	151	60.3	145	73.8	163	72.4
TN	First Attempt	177	67.2	135	77.8	114	60.5	233	76.0	225	79.6
TN	All Attempts	266	55.3	170	69.4	166	52.4	294	70.7	299	72.9
WY	First Attempt	5	.	5	.	4	.	4	.	6	.
WY	All Attempts	6	.	5	.	7	.	4	.	6	.
Total	First Attempt	4,484	66.8	3,819	77.7	3,764	62.6	4,006	76.1	4,223	80.3
Total	All	6,689	57.5	4,877	73.2	5,637	57.9	5,211	70.4	5,237	76.3

*Passing rates are not reported when samples are under 10.

A total of 69,751 examinees tested in English only in 2024/2025 reporting year.

Table 3a. Number of Examinees Tested in English in 2024/2025 reporting year

STATE	NUMBER TESTED
AS	27
CA	7,549
CO	283
GA	329
HI	434
IA	3,612
IL	471
IN	4,445
LA	5,683
MA	4,855
ME	1,577
MH	11
MI	4,370
MN	42
MO	8,643
MS	3,383
MT	2,282
NC	4,913
NH	1,039
NM	1,660
NV	1,991
OH	452
OK	2,911
PA	997
PW	10
TN	6,734
WV	1
WY	1,047
Total	69,751

*Tables 3a and 3b combined reflect all examinees testing in 2024/2025 reporting year. An examinee is either counted as tested in English only (3a) or having tested in Spanish at least once (3b).

A total of 7,510 examinees tested in Spanish in the 2024/2025 reporting year on at least one individual test.

Table 3b. Number of Examinees Tested in Spanish in the 2024/2025 reporting year

STATE	NUMBER TESTED
CA	4,239
CO	47
GA	5
HI	10
IA	94
IL	25
IN	161
LA	209
MA	586
MI	75
MN	3
MO	83
MS	21
MT	11
NC	539
NH	9
NM	257
NV	124
OH	12
OK	448
PA	196
TN	344
WY	12
Total	7,510

*Tables 3a and 3b combined reflect all examinees testing in the 2024/2025 reporting year. An examinee is either counted as test in English only (3a) or having tested in Spanish at least once (3b).

A total of 34,657 examinees completed the full battery in the 2024/2025 reporting year completely or partially in English. The completion rate is calculated as the number of examinees who completed the battery in the 2024/2025 reporting year divided by all examinees in the 2024/2025 reporting year who did not complete the battery in a prior year.

Table 4a. Number of Batteries Completed in English in the 2024/2025 reporting year

STATE	NUMBER COMPLETED	NUMBER TESTED MINUS PRIOR YEAR COMPLETERS	COMPLETION RATE (%)
AS	9	24	37.5
CA	3,968	6,797	58.4
CO	179	272	65.8
GA	169	304	55.6
HI	258	378	68.3
IA	2,045	3,558	57.5
IL	213	429	49.7
IN	2,966	4,110	72.2
LA	3,331	4,945	67.4
MA	2,144	4,393	48.8
ME	917	1,531	59.9
MH	5	11	45.5
MI	1,367	3,989	34.3
MN	25	41	61.0
MO	5,667	8,054	70.4
MS	1,098	3,205	34.3
MT	1,422	2,115	67.2
NC	2,050	4,639	44.2
NH	578	977	59.2
NM	1,011	1,526	66.3
NV	1,245	1,817	68.5
OH	213	417	51.1
OK	1,419	2,718	52.2
PA	406	922	44.0
PW	3	10	30.0
TN	1,217	6,255	19.5
WY	732	996	73.5
Total	34,657	64,433	53.8

*Completion rates are not reported when samples are under 10.

*Examinees completing all five tests of their battery in Spanish are reported in Table 4b.

A total of 3,351 examinees completed the full battery in in the 2024/2025 reporting year in Spanish. Examinees are only considered Spanish completers if all five tests in their battery were taken in Spanish. The completion rate is calculated as the number of examinees who completed the battery in the 2024/2025 reporting year divided by all examinees in in the 2024/2025 reporting year who did not previously complete the battery in a prior year.

Table 4b. Number of Batteries Completed in Spanish in the 2024/2025 reporting academic year

STATE	NUMBER COMPLETED	NUMBER TESTED MINUS PRIOR YEAR COMPLETERS	COMPLETION RATE (%)
CA	1,967	3,795	51.8
CO	14	44	31.8
GA	1	5	.
HI	8	9	.
IA	46	90	51.1
IL	6	22	27.3
IN	99	148	66.9
LA	97	183	53.0
MA	212	506	41.9
MI	30	71	42.3
MN	2	3	.
MO	35	75	46.7
MS	11	18	61.1
MT	9	11	81.8
NC	193	495	39.0
NH	6	9	.
NM	136	236	57.6
NV	67	101	66.3
OH	7	10	70.0
OK	216	399	54.1
PA	86	178	48.3
TN	98	319	30.7
WY	5	11	45.5
Total	3,351	6,738	49.7

*Completion rates are not reported when samples are under 10.

A total of 34,657 examinees passed the full battery in the 2024/2025 reporting year completely or partially in English.

Table 5a. Batteries Completed and Passed in English in the 2024/2025 reporting year

STATE	SAMPLE	NUMBER COMPLETED	NUMBER PASSED	PASSING RATE
AS	First Attempt	9	1	.
AS	Best Attempt	9	5	.
CA	First Attempt	3,968	2,032	51.2
CA	Best Attempt	3,968	3,049	76.8
CO	First Attempt	179	117	65.4
CO	Best Attempt	179	151	84.4
GA	First Attempt	169	79	46.7
GA	Best Attempt	169	139	82.2
HI	First Attempt	258	110	42.6
HI	Best Attempt	258	184	71.3
IA	First Attempt	2,045	1,511	73.9
IA	Best Attempt	2,045	1,926	94.2
IL	First Attempt	213	92	43.2
IL	Best Attempt	213	152	71.4
IN	First Attempt	2,966	1,734	58.5
IN	Best Attempt	2,966	2,394	80.7
LA	First Attempt	3,331	1,786	53.6
LA	Best Attempt	3,331	2,702	81.1
MA	First Attempt	2,144	1,012	47.2
MA	Best Attempt	2,144	1,653	77.1
ME	First Attempt	917	681	74.3
ME	Best Attempt	917	855	93.2
MH	First Attempt	5	1	.
MH	Best Attempt	5	2	.
MI	First Attempt	1,367	295	21.6
MI	Best Attempt	1,367	655	47.9
MN	First Attempt	25	14	56.0
MN	Best Attempt	25	24	96.0
MO	First Attempt	5,667	3,301	58.2
MO	Best Attempt	5,667	4,921	86.8
MS	First Attempt	1,098	496	45.2
MS	Best Attempt	1,098	749	68.2
MT	First Attempt	1,422	889	62.5
MT	Best Attempt	1,422	1,203	84.6
NC	First Attempt	2,050	1,073	52.3
NC	Best Attempt	2,050	1,560	76.1

NH	First Attempt	578	345	59.7
NH	Best Attempt	578	474	82.0
NM	First Attempt	1,011	509	50.3
NM	Best Attempt	1,011	751	74.3
NV	First Attempt	1,245	686	55.1
NV	Best Attempt	1,245	1,016	81.6
OH	First Attempt	213	132	62.0
OH	Best Attempt	213	178	83.6
OK	First Attempt	1,419	792	55.8
OK	Best Attempt	1,419	1,115	78.6
PA	First Attempt	406	204	50.2
PA	Best Attempt	406	314	77.3
PW	First Attempt	3	0	.
PW	Best Attempt	3	0	.
TN	First Attempt	1,217	499	41.0
TN	Best Attempt	1,217	821	67.5
WY	First Attempt	732	487	66.5
WY	Best Attempt	732	659	90.0
Total	First Attempt	34,657	18,878	54.5
Total	Best Attempt	34,657	27,652	79.8

*Passing rates are not reported when samples are under 10.

*Examinees completing all five tests of their battery in Spanish are reported in Table 5b.

A total of 3,351 examinees passed the full battery in the 2024/2025 reporting year completely in Spanish. Examinees are only considered Spanish completers if all the tests in their first battery were taken in Spanish.

Table 5b. Batteries Completed and Passed in Spanish in the 2024/2025 reporting year completely

STATE	SAMPLE	NUMBER COMPLETED	NUMBER PASSED	PASSING RATE
CA	First Attempt	1,967	781	39.7
CA	Best Attempt	1,967	1,299	66.0
CO	First Attempt	14	1	7.1
CO	Best Attempt	14	4	28.6
GA	First Attempt	1	0	.
GA	Best Attempt	1	1	.
HI	First Attempt	8	3	.
HI	Best Attempt	8	4	.
IA	First Attempt	46	26	56.5
IA	Best Attempt	46	41	89.1
IL	First Attempt	6	4	.
IL	Best Attempt	6	5	.
IN	First Attempt	99	45	45.5
IN	Best Attempt	99	77	77.8
LA	First Attempt	97	33	34.0
LA	Best Attempt	97	72	74.2
MA	First Attempt	212	35	16.5
MA	Best Attempt	212	135	63.7
MI	First Attempt	30	2	6.7
MI	Best Attempt	30	13	43.3
MN	First Attempt	2	1	.
MN	Best Attempt	2	1	.
MO	First Attempt	35	9	25.7
MO	Best Attempt	35	28	80.0
MS	First Attempt	11	1	9.1
MS	Best Attempt	11	8	72.7
MT	First Attempt	9	4	.
MT	Best Attempt	9	8	.
NC	First Attempt	193	91	47.2
NC	Best Attempt	193	143	74.1
NH	First Attempt	6	0	.
NH	Best Attempt	6	2	.
NM	First Attempt	136	56	41.2
NM	Best Attempt	136	100	73.5
NV	First Attempt	67	32	47.8

NV	Best Attempt	67	52	77.6
OH	First Attempt	7	1	.
OH	Best Attempt	7	4	.
OK	First Attempt	216	90	41.7
OK	Best Attempt	216	165	76.4
PA	First Attempt	86	22	25.6
PA	Best Attempt	86	43	50.0
TN	First Attempt	98	41	41.8
TN	Best Attempt	98	67	68.4
WY	First Attempt	5	1	.
WY	Best Attempt	5	4	.
Total	First Attempt	3,351	1,279	38.2
Total	Best Attempt	3,351	2,276	67.9

*Passing rates are not reported when samples are under 10.

Some examinees who previously completed the battery but failed in previous years retested in the 2024/2025 reporting year. A total of 6,089 examinees retested and 3,224 of these examinees passed the battery.

Table 6. Previous Years Failed Completers Who Passed in the 2024/2025 reporting year

STATE	SAMPLE	NUMBER WHO PREVIOUSLY FAILED THE BATTERY PRIOR TO THE 2024/2025 REPORTING YEAR AND RETESTED IN THE 2024/2025 REPORTING YEAR	NUMBER WHO PREVIOUSLY FAILED THE BATTERY (PRIOR TO THE 2024/2025 REPORTING YEAR) AND PASSED IN THE 2024/2025 REPORTING YEAR
AS	Best Attempt	3	1
CA	Best Attempt	1,196	623
CO	Best Attempt	14	7
GA	Best Attempt	25	14
HI	Best Attempt	57	26
IA	Best Attempt	58	30
IL	Best Attempt	45	22
IN	Best Attempt	348	211
LA	Best Attempt	764	424
MA	Best Attempt	542	255
ME	Best Attempt	46	33
MI	Best Attempt	385	182
MN	Best Attempt	1	0
MO	Best Attempt	597	360
MS	Best Attempt	181	81
MT	Best Attempt	167	91
NC	Best Attempt	318	186
NH	Best Attempt	62	37
NM	Best Attempt	155	82
NV	Best Attempt	197	119
OH	Best Attempt	37	16
OK	Best Attempt	242	140
PA	Best Attempt	93	47
TN	Best Attempt	504	198
WY	Best Attempt	52	39
Total	Best Attempt	6,089	3,224

Completers who self-reported being under age 16 or above age 90 were excluded from the sample. The average age of the total group was 25.4 years.

Table 7. Means, Standard Deviations, and Percentage of Completers by Age Group, by States, and Total

STATE	NUMBER COMPLETED	RESPONSE RATE (%)	AGE MEAN	AGE SD	16 TO 18 (%)	19 TO 24 (%)	25 TO 29 (%)	30 TO 34 (%)	35 TO 39 (%)	40 TO 49 (%)	50 TO 59 (%)	60+ (%)
AS	9	100.0	19.7	5.9
CA	5,935	99.6	30.4	17.8	19.6	20.7	11.6	12.5	11.6	16.0	6.9	1.0
CO	193	100.0	24.2	11.6	55.4	15.0	5.7	4.7	3.6	12.4	1.6	1.6
GA	170	96.5	27.5	10.9	23.8	25.6	12.2	14.6	7.9	11.0	4.3	0.6
HI	266	88.0	19.2	7.1	69.2	17.5	3.8	3.0	2.1	3.0	0.9	0.4
IA	2,091	98.9	21.4	90.0	35.0	33.3	12.9	7.4	5.3	4.5	1.3	0.2
IL	219	100.0	25.6	10.7	40.2	19.6	11.4	11.0	6.8	5.9	4.6	0.5
IN	3,065	94.7	24.2	9.8	36.8	27.9	11.5	8.3	6.2	6.2	2.6	0.5
LA	3,428	93.1	24.5	10.3	40.9	21.3	9.5	9.3	7.1	8.9	2.8	0.3
MA	2,356	97.8	26.7	10.5	27.0	27.2	11.4	10.5	9.7	10.8	2.5	1.0
ME	917	100.0	23.2	8.7	41.7	30.0	8.9	8.0	4.6	5.1	1.2	0.5
MH	5	100.0	24.8	13.7
MI	1,397	99.9	32.9	10.3	4.7	19.9	15.3	20.5	15.3	16.6	6.5	1.1
MN	27	100.0	28.4	8.9	----	48.1	14.8	7.4	14.8	14.8	----	----
MO	5,702	98.9	21.5	8.7	65.9	13.2	5.1	4.9	4.4	4.7	1.3	0.3
MS	1,109	95.0	23.7	9.7	42.5	24.2	9.6	7.5	6.1	8.1	1.4	0.7
MT	1,431	92.9	20.7	8.1	62.0	18.5	6.8	4.0	3.9	3.1	1.5	0.3
NC	2,243	95.0	26.4	10.8	30.0	24.9	11.0	11.1	8.9	10.0	3.3	0.8
NH	584	90.8	20.4	8.2	59.6	24.3	5.8	3.0	1.9	2.6	2.1	0.6
NM	1,147	93.3	23.7	9.6	43.4	22.9	7.9	9.4	6.7	7.6	1.7	0.4
NV	1,312	95.4	23.6	9.8	44.6	23.2	7.7	8.9	6.4	6.1	3.0	0.2
OH	220	99.1	26.5	8.4	17.4	34.4	16.1	11.5	11.9	8.3	0.5	----
OK	1,635	97.2	29.2	10.7	17.3	23.6	15.1	14.3	11.3	13.2	4.6	0.6
PA	492	98.2	28.7	10.2	14.3	29.0	15.7	13.7	11.8	11.4	3.7	0.4
PW	3	100.0	20.7	0.6
TN	1,315	99.3	28.6	11.4	24.8	23.9	12.3	9.9	9.8	14.0	4.3	1.1
WY	737	92.8	21.7	7.6	47.1	27.9	10.4	5.6	4.1	3.9	1.0	----
Total	38,008	96.9	25.4	24.2	37.3	22.5	10.1	9.4	7.8	9.1	3.2	0.6

* Response rates are not reported when samples are under 10.

* No responses for a given category are indicated by "—".

Of the completers who self-reported gender, 51.5 percent reported as male, 41.7 percent reported as female, 0.5 reported as non-binary, and 6.3 percent indicated that they did not wish to respond.

Table 8. Percentage of Completers by Gender, by States, and Total

STATE	NUMBER COMPLETED	RESPONSE RATE (%)	MALE (%)	FEMALE (%)	NON-BINARY (%)	CHOSE NOT TO RESPOND (%)
AS	9	100.0
CA	5,935	99.8	42.3	52.1	0.5	5.2
CO	193	100.0	53.4	38.3	0.5	7.8
GA	170	99.4	40.8	56.8	1.2	1.2
HI	266	100.0	60.5	38.7	0.4	0.4
IA	2,091	100.0	55.0	41.0	1.2	2.7
IL	219	100.0	42.0	49.8	0.9	7.3
IN	3,065	98.1	52.5	38.5	0.2	8.8
LA	3,428	98.6	58.6	39.9	0.3	1.2
MA	2,356	100.0	46.2	44.7	1.0	8.1
ME	917	100.0	52.5	42.5	1.3	3.7
MH	5	100.0
MI	1,397	100.0	71.8	9.8	0.2	18.2
MN	27	100.0	77.8	11.1	----	11.1
MO	5,702	99.5	52.4	38.7	0.7	8.2
MS	1,109	99.5	52.6	43.1	0.1	4.3
MT	1,431	100.0	54.4	42.2	0.9	2.4
NC	2,243	97.9	51.9	41.6	0.4	6.1
NH	584	99.3	47.8	39.8	1.9	10.5
NM	1,147	99.9	44.1	42.4	0.6	12.9
NV	1,312	100.0	55.8	36.3	----	7.9
OH	220	99.5	42.9	53.4	----	3.7
OK	1,635	98.6	50.9	46.4	0.4	2.3
PA	492	98.4	43.6	49.4	0.6	6.4
PW	3	100.0
TN	1,315	99.3	52.5	40.4	0.2	7.0
WY	737	99.1	55.6	40.4	0.8	3.2
Total	38,008	99.3	51.5	41.7	0.5	6.3

* Response rates are not reported when samples are under 10.

* No responses for a given category are indicated by “—”.

Of the completers who self-reported background, 55.6 percent reported as non-Hispanic, 21.2 percent reported as Hispanic, and 23.2 percent indicated that they did not wish to respond.

Table 9. Completers with Reported Hispanic Background

STATE	NUMBER COMPLETED	RESPONSE RATE (%)	NON-HISPANIC (%)	HISPANIC (%)	CHOSE NOT TO RESPOND (%)
AS	9	100.0	.	.	.
CA	5,935	99.8	17.2	60.8	22.0
CO	193	100.0	53.4	24.9	21.8
GA	170	99.4	79.9	7.7	12.4
HI	266	100.0	35.7	11.7	52.6
IA	2,091	100.0	73.3	14.4	12.3
IL	219	100.0	48.4	16.4	35.2
IN	3,065	98.1	66.0	14.4	19.6
LA	3,428	98.6	84.8	7.1	8.1
MA	2,356	100.0	48.1	29.4	22.5
ME	917	99.9	85.6	4.8	9.6
MH	5	100.0	.	.	.
MI	1,397	100.0	10.9	0.9	88.2
MN	27	100.0	48.1	14.8	37.0
MO	5,702	99.5	60.6	5.8	33.6
MS	1,109	99.5	85.1	3.5	11.3
MT	1,431	100.0	73.7	5.9	20.3
NC	2,243	97.8	60.2	16.4	23.4
NH	584	99.3	72.2	7.1	20.7
NM	1,147	99.9	35.6	40.7	23.7
NV	1,312	100.0	46.0	29.0	25.1
OH	220	99.5	84.0	8.7	7.3
OK	1,635	98.6	64.2	24.8	11.0
PA	492	98.4	50.2	27.9	21.9
PW	3	100.0	.	.	.
TN	1,315	99.3	67.8	12.3	20.0
WY	737	99.1	72.6	15.3	12.1
Total	38,008	99.3	55.6	21.2	23.2

* Response rates are not reported when samples are under 10.

* No responses for a given category are indicated by “—”.

Of the completers who self-reported race, 3.5 percent reported American Indian or Alaskan Native, 1.9 percent reported as Asian, 15.1 percent reported as Black or African American, 0.7 percent reported as Native Hawaiian or Other Pacific Islander, 48.6 percent reported as White, 9.1 percent reported as Other, and 25.9 percent indicated that they did not wish to respond. Examinees had the option to select multiple racial categories. Examinees who indicated being Hispanic had the option of separately reporting a racial identification indicated in this table. The underlying survey question on which this table is based did not include a Hispanic category, which may have led Hispanic examinees to choose “Other” or to not respond.

Table 10. Completers with Reported Race by States and Total

STATE	NUMBER COMPLETED	RESPONSE RATE (%)	AMERICAN INDIAN OR ALASKAN NATIVE (%)	ASIAN (%)	BLACK OR AFRICAN AMERICAN (%)	NATIVE HAWAIIAN OR OTHER PACIFIC ISLANDER (%)	WHITE (%)	OTHER (%)	CHOSE NOT TO RESPOND (%)
AS	9	100.0
CA	5,935	99.7	1.6	3.7	5.0	0.6	34.2	23.8	34.9
CO	193	100.0	4.1	4.7	9.8	2.1	52.8	16.6	22.3
GA	170	99.4	----	0.6	55.6	----	33.7	3.6	9.5
HI	266	100.0	3.8	22.2	2.6	29.7	16.5	6.8	52.6
IA	2,091	100.0	4.4	1.8	15.3	0.1	68.1	2.8	13.6
IL	219	100.0	1.4	----	22.8	0.5	33.8	9.1	38.4
IN	3,065	98.1	1.1	2.7	13.9	0.2	59.4	6.6	19.6
LA	3,428	98.6	2.0	1	34.0	0.2	53.7	4.6	9.0
MA	2,356	99.9	1.4	2.7	20.9	0.5	38.4	14.1	28.9
ME	917	99.9	1.7	0.4	7.1	0.2	77.3	5.0	10.0
MH	5	100.0
MI	1,397	100.0	0.6	0.5	13.9	0.2	15.0	1.1	70.2
MN	27	100.0	11.1	----	37.0	----	22.2	7.4	33.3
MO	5,702	99.5	1.4	0.9	13.7	0.6	50.7	3.8	33.8
MS	1,109	99.4	0.5	0.4	30.0	0.4	57.4	2.0	11.4
MT	1,431	100.0	18.0	1.1	2.3	0.3	63.0	2.6	19.7
NC	2,243	97.3	2.6	0.7	23.1	0.3	41.1	12	25.3
NH	584	99.3	1.7	2.1	5.2	0.3	70.5	3.6	21.7
NM	1,147	99.9	15.9	0.8	2.4	0.4	42.3	10.6	31.9
NV	1,312	100.0	2.7	4.0	14.4	1.7	45.7	8.7	28.6
OH	220	99.5	2.3	1.8	30.1	0.5	61.6	5.9	6.8
OK	1,635	98.5	15.8	1.2	13.7	0.9	54.0	9.3	12.0
PA	492	98.0	0.4	0.8	18.5	0.4	38.0	17.0	28.0
PW	3	66.7
TN	1,315	99.2	1.5	1.7	22.1	0.2	50.8	6.1	22.6
WY	737	98.9	8.0	1.2	4.4	1.0	74.8	4.7	12.6
Total	38,008	99.2	3.5	1.9	15.1	0.7	48.6	9.1	25.9

- * Response rates are not reported when samples are under 10.
- * No responses for a given category are indicated by “—”.

Education level was self-reported by 27.1 percent of all completers, of which the majority (75.8 percent) had some high school– that is, 9th through 12th grade – education.

Table 11. Completers with Reported Education Level by States and Total

STATE	NUMBER COMPLETED	RESPONSE RATE (%)	5TH (%)	6TH (%)	7TH (%)	8TH (%)	9TH (%)	10TH (%)	11TH (%)	12TH (%)
AS	9	0
CA	5,935	20.6	19.3	1.6	1.0	3.7	10.3	14.4	26.0	23.8
CO	193	51.8	8.0	----	----	7.0	7.0	24.0	36.0	18.0
GA	170	68.8	4.3	1.7	----	3.4	18.8	29.1	29.9	12.8
HI	266	25.6	5.9	----	1.5	8.8	29.4	26.5	26.5	1.5
IA	2,091	31.3	25.8	0.3	0.3	2.8	10.9	23.7	30.6	5.7
IL	219	42.5	5.4	3.2	4.3	7.5	9.7	19.4	34.4	16.1
IN	3,065	10.4	69.3	0.3	----	1.6	4.4	9.4	9.1	6.0
LA	3,428	31.6	17.5	0.7	2.0	6.8	15.7	23.5	25.2	8.5
MA	2,356	46.3	20.1	0.7	0.7	5.3	13.9	22.1	24.9	12.2
ME	917	14.3	35.1	0.8	----	7.6	14.5	20.6	19.1	2.3
MH	5	0
MI	1,397	2.7	44.7	----	----	2.6	5.3	15.8	18.4	13.2
MN	27	63.0	52.9	----	----	----	5.9	5.9	29.4	5.9
MO	5,702	29.6	11.4	0.9	0.8	5.0	12.7	26.9	34.0	8.3
MS	1,109	31.3	15.9	1.2	2.6	8.1	18.2	25.9	20.2	8.1
MT	1,431	27.0	18.1	0.3	0.5	2.8	15.0	22.0	32.9	8.3
NC	2,243	36.1	8.1	0.1	2	9.6	21.1	26.9	24.7	7.4
NH	584	36.3	15.1	0.9	0.9	4.2	11.3	21.7	36.8	9.0
NM	1,147	31.5	12.2	0.3	0.6	4.4	17.7	26.3	23.3	15.2
NV	1,312	12.0	20.4	0.6	----	2.5	12.7	18.5	24.8	20.4
OH	220	50.9	4.5	0.9	0.9	5.4	13.4	27.7	33.0	14.3
OK	1,635	34.1	7.5	1.6	2.2	10.6	16.3	24.9	26.7	10.2
PA	492	35.2	8.1	----	----	12.1	12.7	25.4	31.2	10.4
PW	3	100.0
TN	1,315	21.7	9.8	0.3	1.0	2.8	13.3	24.1	34.3	14.3
WY	737	39.2	10.0	0.3	1.4	4.5	17.0	28.4	30.4	8.0
Total	38,008	27.1	16.8	0.8	1.1	5.6	14.0	23.0	27.6	11.2

* Response rates are not reported when samples are under 10.

* No responses for a given category are indicated by "—".

Mother's education level was self-reported by 24.8 percent of all completers. Of the responses provided, 63.6 percent of completers indicated that their mother had some high school or higher, 23.0 percent of completers indicated grade school or less, and 13.4 percent indicated that they did not know.

Table 12. Completers with Reported Mother's Education Level by States and Total

STATE	NUMBER COMPLETE D	RESPONSE RATE (%)	GRADE SCHOOL OR LESS (%)	SOME HIGH SCHOOL (%)	HIGH SCHOOL (%)	SOME COLLEGE (%)	ASSOCIATE'S DEGREE (%)	BACHELO R'S DEGREE (%)	SOME GRADUATE SCHOOL OR HIGHER (%)	DO NOT KNOW (%)
AS	9	0
CA	5,935	19.1	33.3	11.3	15.3	10.9	2.6	6.3	5.0	15.3
CO	193	48.2	11.8	16.1	24.7	18.3	3.2	8.6	8.6	8.6
GA	170	68.2	6.9	14.7	33.6	12.9	2.6	6.0	3.4	19.8
HI	266	6.0	18.8	----	37.5	18.8	12.5	6.3	----	6.3
IA	2,091	29.0	28.8	8.1	22.1	13.2	5.1	7.2	3.6	11.9
IL	219	38.4	8.3	7.1	21.4	11.9	6.0	8.3	9.5	27.4
IN	3,065	10.2	71.0	4.5	6.7	5.7	3.8	2.9	1.3	4.1
LA	3,428	26.5	24.2	9.6	27.3	12.9	4.6	5.4	3.6	12.4
MA	2,356	43.1	29.5	9.4	19.9	11.4	4.2	6.8	5.8	12.9
ME	917	13.7	37.3	9.5	19	10.3	3.2	4.0	1.6	15.1
MH	5	0
MI	1,397	2.8	43.6	5.1	17.9	23.1	2.6	5.1	----	2.6
MN	27	59.3	62.5	6.3.0	12.5	----	6.3	6.3	----	6.3
MO	5,702	27.2	13.9	11.6	25.3	15.1	7.3	9.5	5.8	11.5
MS	1,109	29.7	17.9	15.2	25.2	15.2	4.3	4.6	3.0	14.6
MT	1,431	25.6	20.8	9.3	21.9	13.1	7.9	8.5	5.2	13.4
NC	2,243	34.3	16.1	9.5	27.4	17.7	6.4	5.1	5.2	12.7
NH	584	32.9	16.7	7.3	24	20.3	5.2	9.9	6.3	10.4
NM	1,147	29.3	17.9	8.9	23.8	12.8	6.5	9.5	5.7	14.9
NV	1,312	11.1	25.5	5.5	20.0	10.3	4.8	9.7	5.5	18.6
OH	220	47.3	7.7	13.5	21.2	22.1	8.7	8.7	3.8	14.4
OK	1,635	29.4	13.5	12.7	30.8	10.8	5.0	6.3	4.4	16.5
PA	492	31.1	17.0	13.7	34.6	6.5	3.9	3.9	5.9	14.4
PW	3	100
TN	1,315	20.3	13.5	10.9	26.6	13.1	4.9	7.9	7.5	15.7
WY	737	37.3	12.0	8.0	26.5	12.4	8.0	8.7	2.2	22.2
Total	38,008	24.8	23.0	10.2	23.2	13.2	5.2	7.0	4.8	13.4

* Response rates are not reported when samples are under 10.

* No responses for a given category are indicated by "—".

Father's education level was self-reported by 24.5 percent of all completers. Of the responses provided, 55.8 percent of completers indicated that their father had some high school or higher, 23.8 percent of completers indicated grade school or less, and 20.4 percent indicated that they did not know.

Table 13. Completers with Reported Father's Education Level by States and Total

STATE	NUMBER COMPLETED	RESPONSE RATE (%)	GRADE SCHOOL OR LESS (%)	SOME HIGH SCHOOL (%)	HIGH SCHOOL (%)	SOME COLLEGE (%)	ASSOCIATE'S DEGREE (%)	BACHELOR'S DEGREE (%)	SOME GRADUATE SCHOOL OR HIGHER (%)	DO NOT KNOW (%)
AS	9	0
CA	5,935	18.8	31.9	10.0	19.6	8.6	1.6	4.8	4.7	18.7
CO	193	47.2	15.4	7.7	26.4	15.4	5.5	9.9	6.6	13.2
GA	170	67.1	10.5	7.9	35.1	11.4	----	2.6	2.6	29.8
HI	266	6.0	18.8	6.3	56.3	----	6.3	----	----	12.5
IA	2,091	28.7	31.0	10.3	26.3	7.5	2.8	3.8	1.8	16.3
IL	219	37.9	9.6	7.2	31.3	9.6	1.2	1.2	6.0	33.7
IN	3,065	10.2	72.2	4.8	8.9	4.2	1.3	1.0	1.0	6.7
LA	3,428	26.1	25.1	11.6	27.6	7.4	2.6	3.5	2.8	19.5
MA	2,356	42.1	30.5	8.9	19.7	9.2	3.0	4.7	3.3	20.7
ME	917	13.7	38.9	9.5	17.5	11.9	1.6	2.4	1.6	16.7
MH	5	0
MI	1,397	2.7	44.7	7.9	26.3	----	2.6	2.6	2.6	13.2
MN	27	59.3	62.5	6.3	12.5	----	----	6.3	6.3	6.3
MO	5,702	26.8	15.4	10.7	30.8	10.1	3.3	5.9	3.9	19.9
MS	1,109	29.4	21.2	16.6	21.2	11.7	1.2	1.5	1.8	24.8
MT	1,431	25.3	21	7.2	24.6	11.9	3.6	6.9	4.4	20.4
NC	2,243	33.9	16.3	14.2	27.5	10.4	3.2	4.1	2.1	22.3
NH	584	31.8	16.1	11.3	27.4	8.6	1.6	11.3	5.9	17.7
NM	1,147	29.4	18.7	7.7	25.5	8.9	2.4	5.0	4.7	27.0
NV	1,312	10.8	24.6	7.7	18.3	10.6	4.9	6.3	3.5	23.9
OH	220	47.7	8.6	11.4	40	12.4	1.9	3.8	1.9	20.0
OK	1,635	28.8	14.6	11.5	32.1	10	3.0	2.5	1.7	24.6
PA	492	31.5	18.1	11.6	34.2	5.8	2.6	5.8	2.6	19.4
PW	3	100
TN	1,315	19.8	13.0	10.7	33.3	10.3	3.1	7.3	3.1	19.2
WY	737	36.5	11.5	7.1	30.5	8.2	2.6	4.8	2.2	33.1
Total	38,008	24.5	23.8	10.3	25.8	9.2	2.7	4.6	3.2	20.4

* Response rates are not reported when samples are under 10.

* No responses for a given category are indicated by "—".

Employment status was self-reported by 27.3 percent of all completers. Of the responses provided, 32.9 percent were part-time, 27.7 percent were full-time, 24.5 percent were unemployed, and 14.8 percent were not in the labor force.

Table 14. Completers with Reported Employment Status by States and Total

STATE	NUMBER COMPLETED	RESPONSE RATE (%)	PART-TIME (%)	FULL-TIME (%)	UNEMPLOYED (%)	NOT IN LABOR FORCE (%)
AS	9	0
CA	5,935	21.2	32.8	26.4	26.4	14.4
CO	193	51.8	29.0	30.0	30.0	11.0
GA	170	67.6	21.7	29.6	33.9	14.8
HI	266	6.8	22.2	16.7	38.9	22.2
IA	2,091	31.5	38.9	29.5	21.6	10.0
IL	219	43.4	24.2	32.6	31.6	11.6
IN	3,065	10.5	75.5	14.0	5.6	5.0
LA	3,428	32.8	27.2	25.7	23.2	23.9
MA	2,356	47.2	36.4	28.7	25.1	9.8
ME	917	14.9	51.8	19.7	18.2	10.2
MH	5	0
MI	1,397	2.7	44.7	28.9	18.4	7.9
MN	27	59.3	68.8	12.5	12.5	6.3
MO	5,702	29.8	35.3	28.6	25.1	11.0
MS	1,109	28.8	32.9	21.0	27.0	19.1
MT	1,431	27.2	36.5	28.3	22.9	12.3
NC	2,243	36.4	23.1	30.5	27.9	18.5
NH	584	35.6	39.4	25.5	27.4	7.7
NM	1,147	31.4	31.7	22.2	29.4	16.7
NV	1,312	11.7	35.9	27.5	27.5	9.2
OH	220	52.3	20.9	31.3	30.4	17.4
OK	1,635	35.5	17.9	35.5	21.4	25.2
PA	492	35.2	20.2	37.6	29.5	12.7
PW	3	100.0
TN	1,315	22.2	25.0	34.9	25.0	15.1
WY	737	38.7	30.9	23.9	20.0	25.3
Total	38,008	27.3	32.9	27.7	24.5	14.8

* Response rates are not reported when samples are under 10.

* No responses for a given category are indicated by "—".

Examinees were asked to choose the one best reason from a provided list for taking the test. The list in the table below contains: Technical School (TECH), Two-Year College (2-Yr College), Four-Year College (4-Yr College), Get a Job, Keep Current Job, Role Model, Satisfaction, Public Assist, Military (MIL), Early Release, Court Order, and Other. 25.6 percent of all completers reported their reasons for taking the test. For those who provided reasons, 54.6 percent of the examinees were taking the test to further their education, whether to enter a technical program, a two-year college, or a four-year college; 12.9 percent were taking the test to get a job; and 2.1 percent were taking the test to keep their current job.

Table 15. Completers with Reported Reasons for Taking the Test by States and Total

STATE	NUMBER COMPLETED	RESPONSE RATE (%)	TECH (%)	2-YR COLLEGE (%)	4-YR COLLEGE (%)	GET A JOB (%)	KEEP CURRENT JOB (%)	ROLE MODEL (%)	SATISFACTION (%)	PUBLIC ASSIST (%)	MIL (%)	EARLY RELEASE (%)	COURT ORDER (%)	OTHER (%)
AS	9	0.0
CA	5,935	19.8	31.9	14.1	13.1	15.3	3.1	2.8	11.6	0.1	2.2	0.6	0.1	5.0
CO	193	51.3	17.2	10.1	15.2	18.2	5.1	2.0	14.1	----	6.1	2.0	----	10.1
GA	170	68.8	30.8	6.0	17.9	7.7	0.9	2.6	19.7	----	7.7	----	2.6	4.3
HI	266	6.4	29.4	5.9	11.8	23.5	----	----	11.8	----	11.8	5.9	----	----
IA	2,091	30.2	36.2	12.5	9.3	10.0	1.1	3.5	18.2	0.2	1.3	0.5	0.3	7.0
IL	219	41.1	18.9	14.4	13.3	13.3	1.1	2.2	18.9	----	2.2	1.1	2.2	12.2
IN	3,065	10.5	76.0	4.7	2.5	5.0	2.2	0.3	5.3	----	0.9	0.3	0.6	2.2
LA	3,428	27.9	36.3	9.4	11.9	11.6	2.3	3.7	11.5	----	3.2	2.3	0.9	6.8
MA	2,356	43.8	33.7	17.1	13.8	12.3	1.3	2.1	12.2	0.2	1.7	0.5	0.1	5.0
ME	917	14.8	42.6	10.3	6.6	15.4	2.2	1.5	11.8	----	0.7	----	----	8.8
MH	5	0.0
MI	1,397	2.9	50.0	----	12.5	7.5	2.5	2.5	22.5	----	----	----	2.5	----
MN	27	59.3	56.3	----	18.8	6.3	6.3	----	12.5	----	----	----	----	----
MO	5,702	28.1	25.0	10.0	10.2	14.3	2.8	3.4	18.9	0.2	4.0	1.4	1.9	7.7
MS	1,109	30.0	30.0	20.4	7.8	11.4	1.2	3.9	13.5	0.6	3.0	0.9	1.2	6.0
MT	1,431	26.1	30.5	9.1	11.0	13.6	1.3	1.9	19.3	----	4.8	1.3	0.3	7.0
NC	2,243	34.6	20.8	17.0	11.1	12.1	1.8	6.7	19.3	----	2.8	0.4	0.4	7.6
NH	584	33.6	26.0	10.2	14.8	12.2	1.0	4.1	15.3	----	3.1	2.6	----	10.7
NM	1,147	29.5	26.0	12.1	13.9	13.9	3.0	2.4	16.9	----	1.2	0.9	1.5	8.3
NV	1,312	11.4	36.2	6.7	16.8	11.4	0.7	2.0	12.1	----	5.4	1.3	0.7	6.7
OH	220	50.0	17.3	11.8	15.5	14.5	1.8	7.3	21.8	----	0.9	0.9	2.7	5.5
OK	1,635	31.1	23.6	6.3	10.4	16.7	2.6	6.3	20.5	----	4.1	0.8	2.4	6.3
PA	492	32.7	22.4	7.5	12.4	13.0	3.1	9.9	22.4	----	3.7	----	0.6	5.0
PW	3	100.0
TN	1,315	21.0	25.0	16.7	17.8	13.0	2.2	3.3	10.1	----	6.9	0.4	----	4.7
WY	737	37.3	40.7	5.8	9.8	10.9	1.5	2.5	13.8	----	3.6	0.7	2.5	8.0
Total	38,008	25.6	31.1	11.9	11.6	12.9	2.1	3.5	15.3	0.1	3.0	1.0	0.9	6.5

- * Response rates are not reported when samples are under 10.
- * No responses for a given category are indicated by “—”.

Examinees could select multiple responses to indicate how they prepared for the test. Of the completers reporting, the majority attended test preparation classes and/or were tutored (45.2 percent), followed by using an online or internet resource (31.7 percent), and buying a hard copy test preparation book (11.8 percent).

Table 16. Completers with Reported Ways of Preparing for the Test by States and Total

STATE	NUMBER COMPLETED	RESPONSE RATE (%)	HARD COPY BOOK (%)	EBOOK (%)	COMPUTER SOFTWARE (%)	ONLINE (%)	PREP. CLASS (%)	DID NOT PREPARE (%)
AS	9	0
CA	5,935	11.4	15.0	1.5	0.7	34.4	40.9	8.6
CO	193	33.7	16.9	----	----	52.3	18.5	13.8
GA	170	52.9	10.0	----	----	28.9	56.7	4.4
HI	266	2.6	----	14.3	----	57.1	28.6	----
IA	2,091	16.0	4.8	----	----	22.7	62.4	10.1
IL	219	30.1	9.1	1.5	----	43.9	37.9	7.6
IN	3,065	2.6	11.3	2.5	----	55.0	16.3	15
LA	3,428	16.5	13.1	1.2	0.5	32.9	42.0	10.6
MA	2,356	27.4	11.3	0.8	0.5	32.4	42.7	12.7
ME	917	8.7	3.8	1.3	----	13.8	71.3	10.0
MH	5	0
MI	1,397	1.1	20.0	----	----	53.3	13.3	13.3
MN	27	40.7	----	----	----	45.5	54.5	----
MO	5,702	18.1	11.5	0.8	0.2	35.1	40.4	12.4
MS	1,109	18.5	11.7	0.5	----	19.0	61.5	8.3
MT	1,431	15.3	16.4	0.5	0.5	38.4	26.9	18.7
NC	2,243	22.5	11.3	1.0	0.2	26.9	52.5	8.3
NH	584	19.5	25.4	----	----	32.5	28.9	14.9
NM	1,147	18.2	14.4	1.0	0.5	33.0	40.7	12.4
NV	1,312	6.3	9.6	1.2	2.4	28.9	43.4	15.7
OH	220	34.5	5.3	----	----	39.5	43.4	11.8
OK	1,635	24.0	8.7	0.5	----	21.1	67.4	2.8
PA	492	23.6	19.0	----	----	28.4	38.8	13.8
PW	3	33.3
TN	1,315	20.8	11.7	2.6	----	40.7	38.8	7.3
WY	737	18.3	8.1	----	0.7	20.7	55.6	14.8
Total	38,008	15.8	11.8	0.9	0.3	31.7	45.2	10.6

Table 17a. Reading Formats Administered

STATE	NUMBER TESTED	TEST CENTER, COMPUTER-BASED	PAPER - BASED	ONLINE PROCTORED, COMPUTER-BASED	BRAILLE READER	LARGE PRINT	CASSETT E OR CD	PAPER	SCREEN
AS	25	25	0	0	0	0	0	0	0
CA	10,450	6,564	3,019	867	0	2	1	0	1
CO	283	125	72	86	0	0	0	0	0
GA	306	222	0	84	0	0	0	0	0
HI	482	473	9	0	0	0	0	0	0
IA	2,974	2,854	105	15	0	13	0	0	1
IL	462	238	134	90	0	2	0	0	0
IN	4,348	3,695	519	134	0	26	0	0	14
LA	5,243	4,567	367	309	0	10	1	0	5
MA	4,732	2,704	889	1,139	0	3	3	0	2
ME	1,303	1,211	92	0	0	0	0	0	0
MH	12	0	12	0	0	0	0	0	0
MI	4,100	36	4,044	20	0	2	0	0	0
MN	35	21	0	14	0	0	0	0	1
MO	8,386	7,352	308	726	0	18	1	0	5
MS	2,301	1,722	524	55	0	32	0	0	0
MT	1,947	1,744	133	70	0	4	0	0	0
NC	4,464	2,330	1,965	169	0	7	1	0	6
NH	890	570	248	72	0	1	0	0	0
NM	1,755	1,554	152	49	0	0	0	0	0
NV	2,035	1,783	199	53	0	0	0	0	0
OH	404	315	36	53	0	1	0	0	0
OK	2,720	1,559	1,107	54	0	2	1	0	3
PA	996	361	547	88	0	2	0	0	0
PW	4	0	4	0	0	0	0	0	0
TN	2,739	1,951	637	151	0	0	1	0	1
WY	960	769	42	149	0	5	0	0	1
Total	64,356	44,745	15,164	4,447	0	130	9	0	40

Table 17b. Writing Formats Administered

STATE	NUMBER TESTED	TEST CENTER, COMPUTER-BASED	PAPER - BASED	ONLINE PROCTORED, COMPUTER-BASED	BRAILLE READER	LARGE PRINT	CASSETTE OR CD	PAPER	SCREEN
AS	14	14	0	0	0	0	0	0	0
CA	7,937	5,218	1,978	741	0	3	0	0	1
CO	248	109	53	86	0	0	0	0	0
GA	229	164	0	65	0	0	0	0	0
HI	396	392	4	0	0	0	0	0	0
IA	2,562	2,455	97	10	0	5	0	1	0
IL	331	184	74	73	0	2	0	0	0
IN	3,834	3,273	434	127	0	22	0	0	4
LA	4,389	3,852	290	247	0	8	0	0	5
MA	3,309	1,816	561	932	0	5	0	0	1
ME	1,068	1,001	67	0	0	0	0	0	0
MH	6	0	6	0	0	0	0	0	0
MI	2,578	27	2,532	19	0	3	0	0	0
MN	30	17	0	13	0	0	0	0	0
MO	7,296	6,527	174	595	0	11	2	0	5
MS	1,794	1,332	407	55	0	23	0	0	2
MT	1,749	1,588	94	67	0	1	0	1	0
NC	3,207	1,746	1,316	145	0	1	2	0	7
NH	714	469	159	86	0	0	0	0	0
NM	1,510	1,318	147	45	0	1	1	0	0
NV	1,676	1,506	114	56	0	0	2	0	0
OH	294	232	19	43	0	0	0	0	0
OK	2,143	1,252	837	54	0	0	0	1	2
PA	665	255	336	74	0	0	0	0	0
PW	4	0	4	0	0	0	0	0	0
TN	2,269	1,689	434	146	0	0	1	1	0
WY	856	684	38	134	0	3	0	0	0
Total	51,108	37,120	10,175	3,813	0	88	8	4	27

Table 17c. Math Formats Administered

STATE	NUMBER TESTED	TEST CENTER, COMPUTER-BASED	PAPER - BASED	ONLINE PROCTORED, COMPUTER-BASED	BRAILLE READER	LARGE PRINT	CASSETTE OR CD	PAPER	SCREEN
AS	28	28	0	0	0	0	0	0	0
CA	9,549	6,398	2,346	805	0	2	0	0	0
CO	259	106	69	84	0	0	0	0	0
GA	275	200	0	75	0	0	0	0	0
HI	438	432	6	0	0	0	0	0	0
IA	2,734	2,647	78	9	0	11	0	0	1
IL	402	234	88	80	0	1	0	0	0
IN	4,281	3,636	519	126	0	22	0	0	0
LA	5,262	4,597	363	302	0	22	2	0	1
MA	4,178	2,506	646	1,026	0	8	3	0	2
ME	1,128	1,063	65	0	0	0	0	0	0
MH	8	0	8	0	0	0	0	0	0
MI	4,034	24	3,990	20	0	0	0	0	0
MN	31	16	0	15	0	0	0	0	0
MO	8,425	7,456	243	726	0	17	0	0	0
MS	2,462	1,871	515	76	0	15	0	0	0
MT	2,007	1,787	147	73	0	2	0	0	0
NC	3,836	2,095	1,573	168	0	2	0	0	0
NH	843	551	215	77	0	1	0	0	0
NM	1,809	1,585	153	71	0	3	0	0	0
NV	2,012	1,823	135	54	0	0	0	0	1
OH	308	240	20	48	0	0	0	0	0
OK	2,596	1,465	1,073	58	0	1	0	0	1
PA	833	347	391	95	0	1	0	0	0
PW	6	0	6	0	0	0	0	0	0
TN	2,859	2,151	550	158	0	1	1	0	0
WY	940	751	56	133	0	4	0	0	0
Total	61,543	44,009	13,255	4,279	0	113	6	0	6

Table 17d. Science Formats Administered

STATE	NUMBER TESTED	TEST CENTER, COMPUTER-BASED	PAPER - BASED	ONLINE PROCTORED, COMPUTER-BASED	BRAILLE READER	LARGE PRINT	CASSETTE OR CD	PAPER	SCREEN
AS	24	24	0	0	0	0	0	0	0
CA	8,069	5,233	2,096	740	0	2	0	1	0
CO	224	98	46	80	0	0	0	0	0
GA	240	179	0	61	0	0	0	0	0
HI	354	351	3	0	0	0	0	0	0
IA	2,415	2,324	80	11	0	11	0	1	0
IL	348	192	95	61	0	1	0	0	0
IN	3,756	3,215	420	121	0	19	0	0	9
LA	4,242	3,694	289	259	0	14	1	2	5
MA	3,313	1,897	505	911	0	7	1	1	0
ME	1,034	978	56	0	0	0	0	0	0
MH	8	0	8	0	0	0	0	0	0
MI	3,049	25	3,003	21	0	1	0	0	0
MN	31	19	0	12	0	0	0	0	0
MO	7,012	6,167	268	577	0	19	0	1	7
MS	2,388	1,852	473	63	0	12	1	0	1
MT	1,719	1,544	112	63	0	2	0	0	0
NC	3,257	1,806	1,317	134	0	2	1	0	3
NH	699	454	189	56	0	1	0	0	0
NM	1,509	1,337	123	49	0	0	0	0	1
NV	1,641	1,460	136	45	0	0	0	0	0
OH	274	213	16	45	0	0	0	0	0
OK	2,274	1,284	934	56	0	1	0	0	2
PA	693	259	365	69	0	0	0	0	0
PW	4	0	4	0	0	0	0	0	0
TN	6,371	4,215	1,930	226	0	7	2	2	0
WY	854	680	38	136	0	2	0	0	0
Total	55,802	39,500	12,506	3,796	0	101	6	8	28

Table 17e. Social Studies Formats Administered

STATE	NUMBER TESTED	TEST CENTER, COMPUTER-BASED	PAPER - BASED	ONLINE PROCTORED, COMPUTER-BASED	BRAILLE	READER	LARGE PRINT	CASSETT E OR CD	PAPER	SCREEN
AS	20	20	0	0	0	0	0	0	0	0
CA	8,467	5,370	2,331	766	0	3	0	0	1	1
CO	217	108	30	79	0	0	0	0	0	0
GA	251	186	0	65	0	0	0	0	0	0
HI	396	394	2	0	0	0	0	0	0	0
IA	2,644	2,541	95	8	0	16	0	0	0	0
IL	343	186	105	52	0	0	0	0	0	0
IN	3,946	3,375	449	122	0	24	0	0	1	12
LA	4,335	3,780	308	247	0	20	1	0	2	3
MA	3,516	2,026	565	925	0	4	2	0	1	0
ME	1,127	1,061	66	0	0	0	0	0	0	0
MH	10	0	10	0	0	0	0	0	0	0
MI	3,063	27	3,020	16	0	2	0	0	0	0
MN	29	15	0	14	0	0	0	0	0	0
MO	7,286	6,424	263	599	0	15	0	0	0	6
MS	2,617	2,121	437	59	0	17	0	0	0	2
MT	1,822	1,651	112	59	0	1	0	0	0	0
NC	3,565	1,965	1,472	128	0	1	1	0	2	0
NH	735	478	199	58	0	1	0	0	0	0
NM	1,573	1,374	153	46	0	0	0	0	0	1
NV	1,712	1,510	153	49	0	0	1	0	1	0
OH	317	249	20	48	0	1	0	0	0	0
OK	2,363	1,343	970	50	0	1	0	0	0	1
PA	755	290	392	73	0	1	0	0	0	0
PW	6	0	6	0	0	0	0	0	0	0
TN	6,581	4,430	1,922	229	0	7	1	0	3	0
WY	874	685	49	140	0	2	0	0	0	0
Total	58,570	41,609	13,129	3,832	0	116	6	0	11	26

Table 18. Summary Statistics for Individual Tests

EXAMINEES		READING			WRITING			MATH			SCIENCE			SOCIAL STUDIES		
State	Sample	Number	Mean	SD	Number	Mean	SD	Number	Mean	SD	Number	Mean	SD	Number	Mean	SD
AS	First Attempt	14	6.2	4.3	8	.	.	19	6.3	3.4	15	8.4	3.4	11	9.2	5.4
AS	All Attempts	25	5.8	3.6	14	8.1	3	28	6.9	3.6	24	7.4	3.1	20	8.4	4.7
CA	First Attempt	7,851	10.5	4.3	6,643	11.1	3.3	6,795	10.2	4.7	6,862	11.5	4.0	7,361	12.8	4.4
CA	All Attempts	10,450	9.7	4.4	7,937	10.8	3.3	9,549	9.5	4.6	8,069	11.0	4.1	8,467	12.3	4.4
CO	First Attempt	247	12.7	5	219	12.2	3.8	223	13.3	5.0	215	14.6	3.8	202	15.6	4.4
CO	All Attempts	283	12.3	5.1	248	11.9	3.9	259	12.5	5.2	224	14.4	3.9	217	15.2	4.6
GA	First Attempt	240	10.8	4.7	194	11.3	3.1	202	10.1	5.5	207	11.7	4.5	219	12.8	4.8
GA	All Attempts	306	10.0	4.8	229	11.1	3.1	275	9.7	5.3	240	11.4	4.4	251	12.4	4.8
HI	First Attempt	330	10.3	4.5	294	10.6	3.6	278	9.4	4.8	287	11.7	4.4	284	11.3	4.8
HI	All Attempts	482	9.0	4.5	396	9.8	3.6	438	8.5	4.5	354	10.8	4.5	396	10.3	4.7
IA	First Attempt	2,620	12.4	4	2,305	12.1	3.0	2,348	12.1	4.2	2,299	14.0	3.7	2,420	14.4	4
IA	All Attempts	2,974	12	4.2	2,562	11.8	3.1	2,734	11.7	4.3	2,415	13.8	3.8	2,644	14.0	4.2
IL	First Attempt	327	9.9	4.8	254	10.4	3.4	263	9.6	5.3	261	11.1	4.6	273	11.8	5.1
IL	All Attempts	462	9.0	4.8	331	10.0	3.4	402	8.9	5.0	348	10.1	4.7	343	11.0	5.0
IN	First Attempt	3,535	11.6	4.2	3,291	11.3	3.2	3,437	11.2	4.6	3,438	12.7	4.0	3,517	13.2	4.3
IN	All Attempts	4,348	10.9	4.4	3,834	11.0	3.3	4,281	10.7	4.6	3,756	12.4	4.1	3,946	12.8	4.4
LA	First Attempt	4,013	10.9	4.3	3,650	11.1	3.1	3,711	10.3	4.6	3,713	12.1	4.0	3,730	12.8	4.2
LA	All Attempts	5,243	10.1	4.3	4,389	10.7	3.2	5,262	9.6	4.5	4,242	11.7	4.0	4,335	12.3	4.3
MA	First Attempt	3,217	10.2	4.8	2,601	10.8	3.5	2,845	10	4.9	2,756	11.8	4.3	2,859	12.4	4.7
MA	All Attempts	4,732	9.1	4.7	3,309	10.3	3.5	4,178	9.3	4.7	3,313	11.3	4.3	3,516	11.8	4.7
ME	First Attempt	1,170	13.0	4.1	988	12.5	3.3	948	12.4	4.4	990	14.4	3.6	1,069	14.8	3.9
ME	All Attempts	1,303	12.6	4.3	1,068	12.4	3.3	1,128	11.9	4.4	1,034	14.2	3.7	1,127	14.6	4.1
MH	First Attempt	11	4.5	3.1	5	.	.	8	.	.	7	.	.	9	.	.
MH	All Attempts	12	5.2	3.6	6	.	.	8	.	.	8	.	.	10	5.8	3.9
MI	First Attempt	2,242	8.1	4.4	1,718	9.1	3.2	2,192	7.5	4.0	2,035	9.5	4.2	2,111	10.4	4.7
MI	All Attempts	4,100	7.1	4	2,578	8.5	3.1	4,034	7.2	3.7	3,049	8.7	4.0	3,063	9.5	4.5
MN	First Attempt	27	11.7	4.8	25	11.8	3.6	27	13.1	4.8	30	13.6	3.2	28	14.7	3.7
MN	All Attempts	35	11.1	4.6	30	11.3	3.5	31	12.1	5.2	31	13.5	3.2	29	14.4	3.9
MO	First Attempt	6,638	11.6	4.3	6,023	11.3	3.2	6,074	10.7	4.5	6,270	12.8	4.0	6,310	13.3	4.3
MO	All Attempts	8,386	10.8	4.4	7,296	10.8	3.3	8,425	10.0	4.5	7,012	12.4	4.1	7,286	12.7	4.5
MS	First Attempt	1,739	9.9	4.4	1,427	10.1	3.2	1,837	9.9	4.5	2,049	11.3	4.0	2,131	11.5	4.4
MS	All Attempts	2,301	9.1	4.3	1,794	9.7	3.3	2,462	9.3	4.4	2,388	10.9	4.0	2,617	10.9	4.4
MT	First Attempt	1,675	12.4	4.1	1,500	11.7	3.3	1,559	11.5	4.7	1,582	13.5	4.1	1,600	13.8	4.2
MT	All Attempts	1,947	11.8	4.4	1,749	11.3	3.4	2,007	10.7	4.8	1,719	13.1	4.2	1,822	13.1	4.5
NC	First Attempt	3,421	10.8	4.5	2,661	11.1	3.1	2,828	10.7	4.7	2,895	12.2	4.0	3,111	12.9	4.4
NC	All Attempts	4,464	9.9	4.5	3,207	10.7	3.2	3,836	10.0	4.7	3,257	11.7	4.1	3,565	12.4	4.6
NH	First Attempt	737	12.8	4.2	639	12.0	3.4	632	11.2	4.8	647	13.5	4.1	665	13.9	4.4
NH	All Attempts	890	11.9	4.5	714	11.7	3.4	843	10.4	4.7	699	13.2	4.2	735	13.4	4.5

NM	First Attempt	1,380	11.1	4.3	1,253	11.0	3.2	1,263	9.6	4.4	1,315	12.0	4.0	1,339	12.5	4.3
NM	All Attempts	1,755	10.3	4.4	1,510	10.6	3.3	1,809	9.1	4.3	1,509	11.5	4.1	1,573	12.0	4.4
NV	First Attempt	1,628	11.1	4.5	1,429	11.3	3.3	1,475	10.2	4.7	1,474	12.4	4.2	1,504	13.1	4.4
NV	All Attempts	2,035	10.4	4.5	1,676	10.9	3.4	2,012	9.7	4.6	1,641	12.0	4.3	1,712	12.6	4.5
OH	First Attempt	300	11.8	4.6	246	11.8	3.1	242	11.6	4.9	252	13.2	3.9	285	14.0	4.4
OH	All Attempts	404	10.4	5.0	294	11.2	3.3	308	11.0	4.8	274	12.9	4.1	317	13.4	4.7
OK	First Attempt	2,218	11.5	4.1	1,823	11.3	3.1	1,935	10.4	4.4	2,039	12.6	3.9	2,103	13.4	4.1
OK	All Attempts	2,720	10.7	4.3	2,143	11.0	3.2	2,596	9.9	4.3	2,274	12.2	4.1	2,363	13.0	4.2
PA	First Attempt	752	10.7	4.5	558	11.1	3.2	613	10.9	5.1	612	12.3	4.1	648	13.2	4.5
PA	All Attempts	996	9.9	4.5	665	10.7	3.3	833	10.3	5.1	693	11.9	4.2	755	12.7	4.6
PW	First Attempt	4	.	.	4	.	.	5	.	.	4	.	.	6	.	.
PW	All Attempts	4	.	.	4	.	.	6	.	.	4	.	.	6	.	.
TN	First Attempt	1,916	9.7	4.5	1,848	10.5	3.4	2,031	9.5	4.6	5,490	11.8	4.2	5,488	12.6	4.6
TN	All Attempts	2,739	8.8	4.3	2,269	10.2	3.3	2,859	9.0	4.4	6,371	11.3	4.3	6,581	12.0	4.6
WY	First Attempt	842	12.7	3.9	762	12.2	3.1	770	12.0	4.6	810	13.7	3.6	805	14.3	4
WY	All Attempts	960	12.3	4.1	856	11.8	3.3	940	11.5	4.7	854	13.6	3.7	874	14.0	4.2
Total	First Attempt	49,095	11.0	4.5	42,369	11.1	3.3	44,560	10.4	4.7	48,554	12.2	4.2	50,089	12.9	4.5
Total	All Attempts	64,356	10.1	4.5	51,108	10.7	3.4	61,543	9.8	4.6	55,802	11.7	4.3	58,570	12.3	4.6

* Test summary statistics are not reported for samples fewer than 10.

The average battery scaled scores for the states ranged from 47.9 to 70.3 for first attempts and from 53.0 to 72.2 for best attempts. The average scaled score across all states was 59.9 for first attempts and 62.7 for best attempts.

Table 19. Summary Statistics for Examinees Completing all Five Tests (The Full Battery)

STATE	SAMPLE	NUMBER COMPLETED	SCALED SCORE MEAN	SCALED SCORE SD
AS	First Attempt	9	.	.
AS	Best Attempt	9	.	.
CA	First Attempt	5,935	57.8	15.8
CA	Best Attempt	5,935	60.8	14.0
CO	First Attempt	193	70.3	16.0
CO	Best Attempt	193	72.2	14.6
GA	First Attempt	170	60.3	16.6
GA	Best Attempt	170	63.5	15.1
HI	First Attempt	266	53.3	19.0
HI	Best Attempt	266	57.0	16.6
IA	First Attempt	2,091	67.3	14.2
IA	Best Attempt	2,091	69.0	12.4
IL	First Attempt	219	57.1	17.7
IL	Best Attempt	219	61.1	15.5
IN	First Attempt	3,065	61.3	15.9
IN	Best Attempt	3,065	63.5	14.2
LA	First Attempt	3,428	58.9	15.1
LA	Best Attempt	3,428	61.7	13.2
MA	First Attempt	2,356	57.8	16.7
MA	Best Attempt	2,356	61.6	14.4
ME	First Attempt	917	68.6	14.4
ME	Best Attempt	917	70.2	12.9
MH	First Attempt	5	.	.
MH	Best Attempt	5	.	.
MI	First Attempt	1,397	47.9	16.5
MI	Best Attempt	1,397	53.0	14.0
MN	First Attempt	27	65.3	14.4
MN	Best Attempt	27	67.1	13.4
MO	First Attempt	5,702	61.2	16.0
MO	Best Attempt	5,702	64.0	13.7
MS	First Attempt	1,109	55.3	16.0
MS	Best Attempt	1,109	58.0	14.3
MT	First Attempt	1,431	63.9	16.2
MT	Best Attempt	1,431	66.1	14.3
NC	First Attempt	2,243	60.1	15.5

NC	Best Attempt	2,243	62.7	13.5
NH	First Attempt	584	64.6	16.1
NH	Best Attempt	584	66.9	14.2
NM	First Attempt	1,147	57.5	16.3
NM	Best Attempt	1,147	60.5	14.2
NV	First Attempt	1,312	60.1	16.4
NV	Best Attempt	1,312	62.9	14.6
OH	First Attempt	220	64.0	15.7
OH	Best Attempt	220	66.5	13.9
OK	First Attempt	1,635	61.2	14.7
OK	Best Attempt	1,635	63.6	12.9
PA	First Attempt	492	60.7	15.4
PA	Best Attempt	492	63.6	13.6
PW	First Attempt	3	.	.
PW	Best Attempt	3	.	.
TN	First Attempt	1,315	55.7	17.7
TN	Best Attempt	1,315	59.1	15.9
WY	First Attempt	737	66.2	14.3
WY	Best Attempt	737	68.2	12.5
Total	First Attempt	38,008	59.9	16.3
Total	Best Attempt	38,008	62.7	14.3

* Battery summary statistics are not reported for samples fewer than 10.

Reported reason for testing is provided for Battery Passers. The list in the table below contains: Technical School (TECH), Two-Year College (2-Yr College), Four-Year College (4-Yr College), Get a Job, Keep Current Job, Role Model, Satisfaction, Public Assist, Military (MIL), Early Release, Court Order, and Other.

Table 20. Battery Passers with Reported Reason for Testing

STATE	NUMBER PASSED	RESPONSE RATE (%)	TECH (%)	2-YR COLLEGE (%)	4-YR COLLEGE (%)	GET A JOB (%)	KEEP CURRENT JOB (%)	ROLE MODEL (%)	SATISFACTION (%)	PUBLIC ASSIST (%)	MIL (%)	EARLY RELEASE (%)	COURT ORDER (%)	OTHER (%)
AS	1	0.0
CA	2,813	20.3	28.8	14.3	14.0	15.2	2.4	3.3	12.2	0.2	3.0	0.5	0.2	5.8
CO	118	53.4	14.3	11.1	14.3	20.6	3.2	3.2	15.9	----	6.3	1.6	----	9.5
GA	79	67.1	24.5	5.7	18.9	11.3	1.9	----	24.5	----	3.8	----	1.9	7.5
HI	113	4.4	20.0	20.0	20.0	20.0	----	----	----	----	20.0	----	----	----
IA	1,537	28.3	28.5	12.2	10.3	12.0	1.1	4.4	21.4	0.2	1.4	0.5	0.2	7.8
IL	96	44.8	11.6	20.9	16.3	16.3	2.3	2.3	14.0	----	4.7	----	----	11.6
IN	1,779	8.8	71.2	3.8	3.2	7.7	3.2	0.6	5.8	----	0.6	0.6	0.6	2.6
LA	1,819	26.6	28.6	10.8	15.1	14.3	2.3	3.5	12.0	----	3.5	1.9	0.8	7.2
MA	1,047	43.2	29.9	15.5	17.0	13.7	1.8	2.2	12.2	0.2	2.0	0.7	0.2	4.6
ME	681	12.2	36.1	12.0	8.4	14.5	2.4	----	14.5	----	----	----	----	12.0
MH	1	0.0
MI	297	6.4	31.6	----	21.1	10.5	5.3	5.3	26.3	----	----	----	----	----
MN	15	73.3	45.5	----	27.3	9.1	9.1	----	9.1	----	----	----	----	----
MO	3,310	30.2	21.8	11.8	11.5	15.0	2.2	3.2	19.3	0.1	4.4	1.1	1.6	8.0
MS	497	29.4	24.0	22.6	8.9	15.8	0.7	2.7	14.4	0.7	2.7	0.7	0.7	6.2
MT	893	25.8	22.6	10.0	12.2	12.2	2.2	1.3	23.9	----	4.8	1.7	0.4	8.7
NC	1,164	34.6	19.9	17.1	12.9	10.4	2.0	6.2	19.1	----	3.7	0.5	0.2	7.9
NH	345	33.3	25.2	6.1	15.7	13.9	0.9	4.3	15.7	----	2.6	2.6	----	13.0
NM	565	31.0	22.3	14.9	16.6	12.0	3.4	----	17.7	----	1.1	1.7	1.7	8.6
NV	718	12.0	32.6	4.7	22.1	15.1	----	1.2	14.0	----	2.3	1.2	----	7.0
OH	133	52.6	20.0	10.0	17.1	15.7	2.9	10.0	17.1	----	----	1.4	2.9	2.9
OK	882	31.3	23.6	6.9	10.5	18.1	2.2	5.1	20.7	----	5.4	1.1	1.4	5.1
PA	226	32.7	21.6	5.4	12.2	18.9	2.7	6.8	18.9	----	4.1	----	1.4	8.1
TN	540	30.4	21.3	15.9	19.5	16.5	3.0	2.4	11.0	----	7.3	0.6	----	2.4
WY	488	33.8	36.4	6.7	10.9	13.9	1.8	1.8	13.9	----	2.4	1.2	1.8	9.1
Total	20,157	26.2	26.8	12.1	13.2	14.1	2.1	3.3	16.3	0.1	3.3	1.0	0.8	7.0

* Response rates are not reported when samples are under 10.

* No responses for a given category are indicated by "—".

Mean score and score standard deviation for each test are provided for examinees passing the Battery in the 2024/2025 reporting year on their first attempt.

Table 21. Battery Summary Statistics for Examinees Passing on Their First Attempt

EXAMINEES		READING		WRITING		MATH		SCIENCE		SOCIAL STUDIES		BATTERY	
State	Number Passed	Mean	SD	Mean	SD	Mean	SD	Mean	SD	Mean	SD	Mean	SD
AS	1
CA	2,814	13.4	3.0	12.9	2.4	13.0	3.3	13.8	3.2	15.3	3.1	68.4	11.4
CO	118	15.3	2.8	13.9	2.4	14.8	3.7	16.0	3.0	16.9	2.9	76.8	11.5
GA	79	14.3	3.1	13.1	2.3	13.7	4.2	14.6	3.2	16.1	3.3	71.8	12.3
HI	113	13.9	3.0	13.1	2.6	13.3	3.0	14.9	3.2	14.8	3.5	70.0	12.3
IA	1,537	14.3	2.9	13.2	2.3	13.8	3.1	15.3	2.8	15.9	2.9	72.5	10.7
IL	96	13.9	3.0	12.9	2.7	13.6	3.5	14.8	3.2	15.3	3.4	70.4	12.5
IN	1,779	13.9	3.0	12.8	2.4	13.5	3.2	14.8	3.0	15.3	3.2	70.3	11.3
LA	1,819	13.6	2.9	12.7	2.4	13.0	3.2	14.3	3.0	15.0	3.1	68.6	11.1
MA	1,047	13.9	3.0	12.9	2.6	13.3	3.5	14.7	3.1	15.4	3.3	70.2	12.4
ME	681	14.8	3.0	13.5	2.6	13.8	3.4	15.5	2.9	15.9	3.1	73.5	11.7
MH	1
MI	297	13.7	3.1	12.5	2.4	12.4	3.0	14.4	3.2	15.8	3.1	68.7	11.6
MN	15	14.3	2.6	13.1	3.0	14.7	3.7	14.7	2.7	15.9	3.3	72.7	12.3
MO	3,310	14.0	3.0	12.8	2.5	13.2	3.2	14.9	3.0	15.4	3.1	70.3	11.4
MS	497	13.4	3.1	12.3	2.5	12.9	3.1	14.2	2.9	14.3	3.3	67.1	11.1
MT	893	14.4	2.8	13.2	2.5	13.8	3.3	15.3	2.9	15.6	3.0	72.3	11.1
NC	1,164	13.8	3.0	12.6	2.4	13.4	3.3	14.5	3.0	15.3	3.2	69.6	11.1
NH	345	14.8	2.9	13.4	2.6	13.8	3.4	15.4	2.9	16.0	3.1	73.4	11.7
NM	565	13.8	2.9	12.8	2.5	12.5	3.2	14.5	3.0	15.0	3.2	68.6	11.5
NV	718	13.9	2.9	13.0	2.4	13.2	3.3	14.9	3.0	15.4	3.1	70.4	11.2
OH	133	14.5	3.1	13.2	2.5	13.7	3.2	15.3	2.9	16.2	2.9	72.8	11.2
OK	882	13.9	2.9	12.8	2.3	12.8	3.2	14.6	2.9	15.3	3.0	69.4	10.7
PA	226	13.6	3.0	12.8	2.3	13.9	3.5	14.6	3.2	15.7	3.0	70.7	11.4
PW	0
TN	540	13.8	3.3	13.1	2.7	13.5	3.5	14.6	3.4	15.4	3.4	70.3	13.3
WY	488	14.3	2.7	13.4	2.3	14.0	3.1	15.2	2.8	15.9	2.9	72.8	10.2
Total	20,158	13.9	3.0	12.9	2.5	13.3	3.3	14.7	3.0	15.4	3.1	70.2	11.5

* Battery summary statistics are not reported for state samples fewer than 10.

Completers who self-reported being under age 16 or above age 90 were excluded from the sample.

Table 22. Battery Passing Rates by Reported Age for Examinees Passing on Their First Attempt

STATE	NUMBER COMPLETED	PASSING RATE (%)	16 TO 18 (%)	19 TO 24 (%)	25 TO 29 (%)	30 TO 34 (%)	35 TO 39 (%)	40 TO 49 (%)	50 TO 59 (%)	60+ (%)
AS	9	11.1
CA	5,935	47.4	51.4	54.5	53.2	48.5	42.9	39.6	33.5	29.7
CO	193	61.1	68.2	72.4	54.5	55.6	42.9	33.3	66.7	0.0
GA	170	46.5	56.4	42.9	40.0	50.0	53.8	38.9	14.3	0.0
HI	266	42.5	40.1	46.3	88.9	57.1	0.0	42.9	100.0	0.0
IA	2,091	73.5	71.4	78.7	76.0	71.2	73.4	56.4	66.7	75.0
IL	219	43.8	43.2	55.8	40.0	58.3	40.0	23.1	10.0	0.0
IN	3,065	58.0	57.2	64.1	58.9	60.4	52.5	45.9	35.5	35.7
LA	3,428	53.1	59.7	52.0	49.0	53.0	43.2	34.6	32.6	12.5
MA	2,356	44.4	56.4	47.8	45.8	41.6	32.6	23.8	20.7	18.2
ME	917	74.3	78.8	78.9	65.9	67.1	54.8	63.8	45.5	40.0
MH	5	20.0
MI	1,397	21.3	34.8	28.8	19.2	18.2	19.2	18.5	13.2	31.3
MN	27	55.6	----	46.2	50.0	100.0	75.0	50.0	----	----
MO	5,702	58.0	55.7	66.3	68.1	58.9	57.6	60.7	45.3	36.8
MS	1,109	44.8	50.8	51.4	40.6	40.5	23.4	28.2	13.3	14.3
MT	1,431	62.4	63.1	71.5	63.3	49.1	55.8	43.9	30.0	25.0
NC	2,243	51.9	58.2	58.2	52.6	47.5	46.3	39.3	29.6	12.5
NH	584	59.1	62.3	56.6	67.7	62.5	30.0	35.7	45.5	0.0
NM	1,147	49.3	55.2	51.8	47.1	39.6	38.9	42.0	5.6	25.0
NV	1,312	54.7	56.1	56.4	66.0	53.2	46.3	42.1	48.6	0.0
OH	220	60.5	73.7	69.3	74.3	44.0	42.3	22.2	0.0	----
OK	1,635	53.9	63.3	61.3	57.1	51.8	51.4	38.1	34.2	20.0
PA	492	45.9	63.8	53.6	43.4	50.0	40.4	16.4	27.8	50.0
PW	3	0.0
TN	1,315	41.1	47.5	44.9	43.1	41.9	31.3	31.1	26.8	28.6
WY	737	66.2	67.7	63.9	64.8	60.5	67.9	55.6	57.1	----
Total	38,008	53.0	57.9	58.6	54.1	48.9	43.7	38.2	32.2	26.4

* Battery passing rates are not reported for state samples fewer than 10.

* No responses for a given category are indicated by "—".

Table 23. Battery Passing Rates by Reported Gender for Examinees Passing on Their First Attempt

STATE	NUMBER COMPLETED	PASS RATE (%)	MALE (%)	FEMALE (%)	NON-BINARY (%)	CHOSE NOT TO RESPOND (%)
AS	9	11.1
CA	5,935	47.4	52.9	43.4	55.6	43.3
CO	193	61.1	61.2	59.5	100.0	66.7
GA	170	46.5	44.9	45.8	50.0	100.0
HI	266	42.5	44.7	39.8	0.0	0.0
IA	2,091	73.5	73.0	73.3	92.0	78.9
IL	219	43.8	48.9	39.4	50.0	43.8
IN	3,065	58.0	59.4	54.6	50.0	64.0
LA	3,428	53.1	53.1	51.8	77.8	59.5
MA	2,356	44.4	49.2	39.0	65.2	44.7
ME	917	74.3	75.1	72.3	91.7	79.4
MH	5	20.0
MI	1,397	21.3	20.3	27.7	33.3	21.3
MN	27	55.6	61.9	33.3	----	33.3
MO	5,702	58.0	59.6	56.7	86.5	52.7
MS	1,109	44.8	40.0	51.4	100.0	40.4
MT	1,431	62.4	62.9	61.3	76.9	65.7
NC	2,243	51.9	53.4	50.8	77.8	54.5
NH	584	59.1	60.3	55.4	90.9	60.7
NM	1,147	49.3	53.5	46.3	57.1	43.9
NV	1,312	54.7	55.3	54.4	----	51.9
OH	220	60.5	63.8	57.3	----	75.0
OK	1,635	53.9	54.9	52.7	57.1	64.9
PA	492	45.9	55.5	39.3	33.3	35.5
PW	3	0.0
TN	1,315	41.1	42.3	41.3	0.0	27.5
WY	737	66.2	67.2	65.1	66.7	52.2
Total	38,008	53.0	54.6	51.5	72.9	48.6

* Battery passing rates are not reported for state samples fewer than 10.

* No responses for a given category are indicated by "—".

Table 24. Battery Passing Rates by Reported Hispanic Background for Examinees Passing on Their First Attempt

STATE	NUMBER COMPLETED	PASSING RATE (%)	NON-HISPANIC (%)	HISPANIC (%)	CHOSE NOT TO RESPOND (%)
AS	9	11.1	.	.	.
CA	5,935	47.4	53.6	46.8	44.3
CO	193	61.1	70.9	47.9	52.4
GA	170	46.5	43.7	53.8	57.1
HI	266	42.5	44.2	51.6	39.3
IA	2,091	73.5	74.5	66.8	75.5
IL	219	43.8	50.9	58.3	27.3
IN	3,065	58.0	60.1	49.5	56.9
LA	3,428	53.1	53.5	52.1	45.1
MA	2,356	44.4	51.9	36.0	39.7
ME	917	74.3	74.9	68.2	71.6
MH	5	20.0	.	.	.
MI	1,397	21.3	37.5	53.8	18.9
MN	27	55.6	61.5	75.0	40.0
MO	5,702	58.0	60.0	54.1	55.5
MS	1,109	44.8	47.1	53.8	26.4
MT	1,431	62.4	63.0	63.5	59.8
NC	2,243	51.9	54.1	48.3	51.3
NH	584	59.1	64.0	31.7	50.8
NM	1,147	49.3	52.9	48.1	45.6
NV	1,312	54.7	57.4	50.8	54.4
OH	220	60.5	61.4	68.4	43.8
OK	1,635	53.9	55.8	46.3	61.6
PA	492	45.9	53.9	32.6	45.3
PW	3	0.0	.	.	.
TN	1,315	41.1	42.7	43.8	32.6
WY	737	66.2	66.8	59.8	68.2
Total	38,008	53.0	57.9	47.8	46.2

* Battery passing rates are not reported for state samples fewer than 10.

* No responses for a given category are indicated by “—”.

Examinees had the option to select multiple racial categories. Examinees who indicated being Hispanic had the option of separately reporting a racial identification indicated in this table. The underlying survey question on which this table is based did not include a Hispanic category, which may have led Hispanic examinees to choose “Other” or to not respond.

Table 25. Battery Passing Rates by Reported Races for Examinees Passing on Their First Attempt

STATE	NUMBER COMPLETED	PASSING RATE	AMERICAN INDIAN (%)	ASIAN (%)	AFRICAN AMERICAN (%)	PACIFIC ISLANDER (%)	WHITE (%)	OTHER (%)	CHOSE NOT TO RESPOND
AS	9	11.1
CA	5,935	47.4	54.8	53.0	42.6	36.4	49.8	48.8	44.7
CO	193	61.1	50.0	77.8	47.4	50.0	73.5	43.8	55.8
GA	170	46.5	----	100.0	39.4	----	54.4	50.0	62.5
HI	266	42.5	60.0	42.4	14.3	40.5	61.4	55.6	37.9
IA	2,091	73.5	63.0	56.8	58.8	100.0	77.5	79.3	73.2
IL	219	43.8	0.0	----	32.0	100.0	66.2	55.0	27.4
IN	3,065	58.0	65.6	50.0	44.4	83.3	62.1	53.3	58.4
LA	3,428	53.1	49.3	54.5	37.9	75.0	63.6	48.4	44.2
MA	2,356	44.4	33.3	54.0	35.8	9.1	57.5	34.0	37.6
ME	917	74.3	62.5	75.0	55.4	100.0	77.1	65.2	71.7
MH	5	20.0
MI	1,397	21.3	33.3	57.1	14.9	0.0	32.5	75.0	19.1
MN	27	55.6	33.3	----	60.0	----	50.0	100.0	44.4
MO	5,702	58.0	59.8	68.6	42.4	51.5	64.9	53.5	54.8
MS	1,109	44.8	66.7	50.0	30.5	50.0	56.3	22.7	26.2
MT	1,431	62.4	46.3	68.8	63.6	60.0	68.4	56.8	59.6
NC	2,243	51.9	49.1	60.0	39.0	57.1	62.8	45.0	51.4
NH	584	59.1	70.0	66.7	43.3	50.0	62.8	33.3	54.0
NM	1,147	49.3	46.7	66.7	57.1	80.0	55.3	48.4	42.9
NV	1,312	54.7	55.6	59.6	44.4	63.6	61.7	43.9	53.9
OH	220	60.5	80.0	50.0	43.9	100.0	71.1	53.8	66.7
OK	1,635	53.9	59.1	60.0	40.0	60.0	57.9	44.0	55.7
PA	492	45.9	0.0	25.0	48.3	0.0	52.5	39.0	42.2
PW	3	0.0
TN	1,315	41.1	47.4	54.5	26.0	33.3	50.4	43.0	32.9
WY	737	66.2	70.7	77.8	56.3	42.9	67.9	52.9	64.1
Total	38,008	53.0	53.5	55.5	39.6	45.8	62.1	47.6	46.4

* Battery passing rates are not reported for state samples fewer than 10.

* No responses for a given category are indicated by “—”.

Compared to 2023, overall, number tested decreased in the 2024-2025 reporting year. Percent passing (first attempt) slightly decreased from 2023 (55.0 percent) to 2024-2025 (53.0 percent).

Table 26. Year to Year Comparison of Examinees

STATE	TOTAL NUMBER OF EXAMINEES TESTED					PERCENT OF COMPLETERS PASSING BATTERY				
	2020	2021	2022	2023	2024-2025	2020	2021	2022	2023	2024-2025
AA	.	72	149	.	.	.	74.6	77.3	.	.
AS	10	25	35	22	27	11.1	12.5	15.8	0.0	11.1
CA	7,749	8,794	9,295	10,745	11,788	56.7	51.7	51.2	48.1	47.4
CO	260	361	329	326	330	76.9	63.6	69.9	66.7	61.1
GA	7	80	153	164	334	.	60.5	54.1	56.8	46.5
HI	479	505	377	520	444	52.9	46.8	53.8	40.2	42.5
IA	2,134	2,693	2,863	3,334	3,706	82.0	82.4	78.3	73.9	73.5
IL	410	572	549	533	496	44.9	42.2	46.1	37.3	43.8
IN	.	2,076	6,536	6,419	4,606	.	55.6	58.2	56.1	58.0
LA	3,996	4,905	5,365	6,270	5,892	55.4	52.5	58.5	54.4	53.1
MA	2,679	3,750	3,613	4,558	5,441	58.9	52.6	56.6	47.1	44.4
ME	1,087	1,240	1,261	1,500	1,577	77.4	78.6	80.7	77.7	74.3
MH	1	2	5	9	11	20.0
MI	73	209	641	3,117	4,445	56.1	47.9	52.0	29.6	21.3
MN	.	.	.	16	45	.	.	.	0.0	55.6
MO	7,139	9,393	9,665	10,444	8,726	65.9	60.7	64.1	60.1	58.0
MP	38	44	44	5	.	73.3	66.7	81.8	.	.
MS	1,748	2,230	2,377	3,065	3,404	53.7	49.9	49.8	43.1	44.8
MT	1,543	2,056	2,180	2,555	2,293	70.4	65.7	66.1	63.1	62.4
NC	3,139	3,477	3,995	4,665	5,452	60.0	55.5	57.9	56.9	51.9
NH	633	1,041	1,170	1,288	1,048	77.3	74.7	74.4	68.6	59.1
NJ	2,758	1,619	3,817	2,608	.	67.7	53.2	53.2	48.3	.
NM	1,211	1,373	1,480	1,781	1,917	57.6	51.7	58.2	46.8	49.3
NV	1,348	1,640	1,854	2,060	2,115	61.8	56.8	56.9	53.4	54.7
OH	404	418	385	439	464	55.9	55.5	59.1	53.3	60.5
OK	2,348	2,686	2,738	3,170	3,359	59.0	57.2	59.2	56.5	53.9
PA	1,143	1,266	1,395	1,348	1,193	54.7	47.7	56.4	48.9	45.9
PW	16	29	26	30	10	50.0	71.4	85.7	70.0	0.0
TN	4,333	5,535	5,727	6,701	7,078	60.1	54.2	59.4	52.9	41.1
TX	1,193	1,025	.	.	.	49.8	45.8	.	.	.
WV	.	.	2,315	3,710	.	.	.	67.4	59.0	.
WY	587	776	925	989	1,059	77.6	70.1	69.8	63.6	66.2
Total	47,773	59,817	71,264	82,391	77,260	62.1	57.2	59.9	55.0	53.0

*Passing rates are not reported for samples under 10.