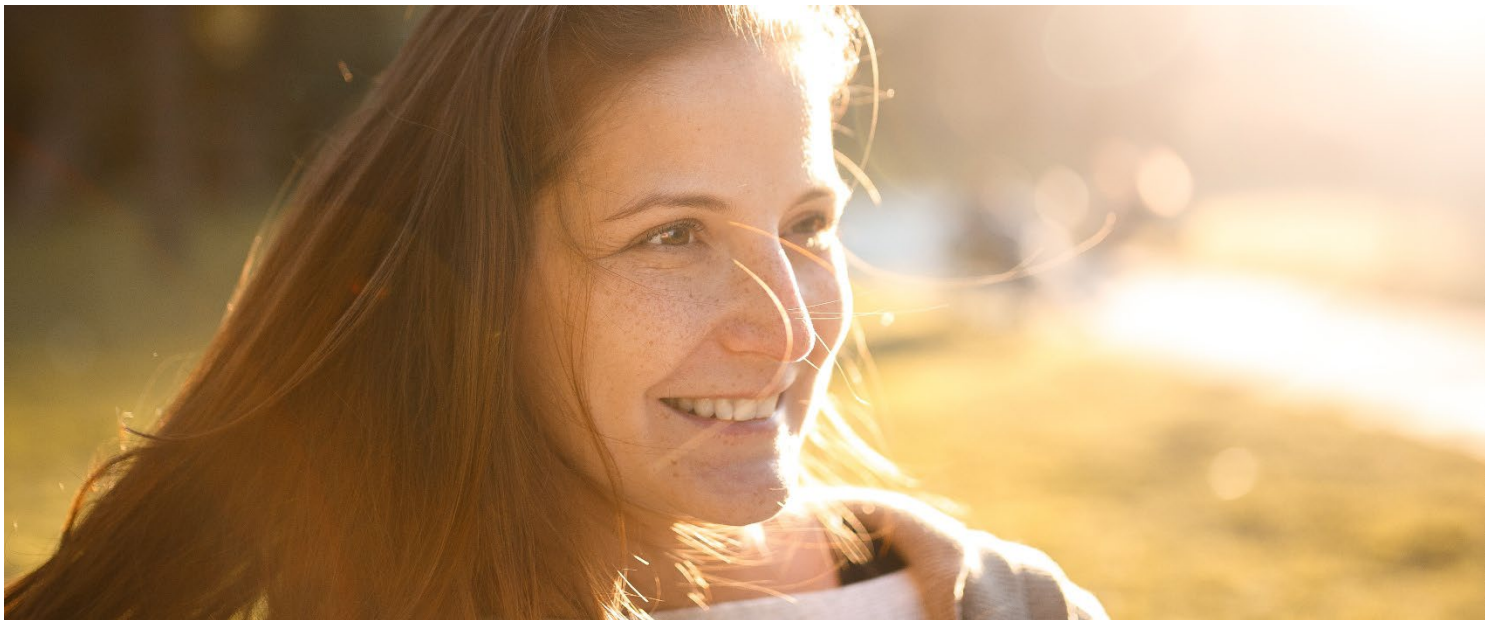


REPORT

2024 Annual Statistical Report



Version
1.0

Date
Monday, 14 July 2025

Classification
Public

Contents

About HiSET	4
About PSI	4
About ETS	5
About ITP	5
Test Content	5
Overview	6
The HiSET Exam	6
Table 1. Number of Test Items and Time Limits	6
Scoring the HiSET Exam	7
Explanation of the Scaled Scores	7
Samples Reported	8
State Policies	8
HiSET Annual Report	9
The Standard Setting	9
Table 2a. Examinees Who Took and Passed Individual Tests in English	10
Table 2b. Examinees Who Took and Passed Individual Tests in Spanish	12
Table 3a. Number of Examinees Tested in English in 2024	14
Table 3b. Number of Examinees Tested in Spanish in 2024	15
Table 4a. Number of Batteries Completed in English in 2024	16
Table 4b. Number of Batteries Completed in Spanish in 2024	17
Table 5a. Batteries Completed and Passed in English in 2024	18
Table 5b. Batteries Completed and Passed in Spanish in 2024	20
Table 6. Previous Years Failed Completers Who Passed in 2024	22
Table 7. Means, Standard Deviations, and Percentage of Completers by Age Group, by States, and Total	23
Table 8. Percentage of Completers by Gender, by States, and Total	24
Table 9. Completers with Reported Hispanic Background	25
Table 10. Completers with Reported Race by States and Total	26
Table 11. Completers with Reported Education Level by States and Total	27
Table 12. Completers with Reported Mother's Education Level by States and Total	28
Table 13. Completers with Reported Father's Education Level by States and Total	29
Table 14. Completers with Reported Employment Status by States and Total	30
Table 15. Completers with Reported Reasons for Taking the Test by States and Total	31
Table 16. Completers with Reported Ways of Preparing for the Test by States and Total	32

Table 17a. Reading Formats Administered	33
Table 17b. Writing Formats Administered	34
Table 17c. Math Formats Administered	35
Table 17d. Science Formats Administered	36
Table 17e. Social Studies Formats Administered	37
Table 18. Summary Statistics for Individual Tests	38
Table 19. Summary Statistics for Examinees Completing all Five Tests (The Full Battery)	40
Table 20. Battery Passers with Reported Reason for Testing	42
Table 21. Battery Summary Statistics for Examinees Passing on Their First Attempt	43
Table 22. Battery Passing Rates by Reported Age for Examinees Passing on Their First Attempt	44
Table 23. Battery Passing Rates by Reported Gender for Examinees Passing on Their First Attempt	45
Table 24. Battery Passing Rates by Reported Hispanic Background for Examinees Passing on Their First Attempt	46
Table 25. Battery Passing Rates by Reported Races for Examinees Passing on Their First Attempt	47
Table 26. Year to Year Comparison of Examinees	48

About HiSET

Some individuals who seek a high school credential may lack the opportunity to experience a traditionally structured high school teaching and learning environment. The HiSET Program seeks to help these individuals identify, acquire, and demonstrate the knowledge and skills that they will need to succeed in postsecondary education and in the workplace.

The *HiSET®* Program was originally co-developed by Educational Testing Service (ETS®) and Iowa Testing Programs (ITP) in furtherance of ETS's mission *to provide innovative and meaningful measurement solutions that improve teaching and learning, expand educational opportunities, and inform educational policy.*

In late 2021, HiSET was purchased by PSI Services, LLC as an extension of its mission *to help people meet their potential.* On a practical level, given PSI's strong presence in the US domestic certification market, PSI believes that there is considerable potential to grow the program, both through increased adoption by states and greater uptake among test takers, as well as exploiting synergies and broadening the range of associated products and services on offer from PSI's wider portfolio.

About PSI

For more than 70 years, PSI has provided Assessment and Talent Management solutions to a range of private and public sector organizations both in the US and internationally. Employers, governments, professional associations, certifying and licensing bodies, and leading educational institutions trust PSI to deliver on its mission of helping people succeed through testing excellence, including test development, administration, multi-modal delivery, and licensure management services.

On January 25, 2024, ETS acquired PSI. This partnership combines ETS's expertise as the world's largest private educational measurement organization with PSI's global leadership in test development and delivery for workforce certification and licensure. Together, ETS and PSI administer nearly 50 million tests annually across more than 200 countries and territories, supporting individuals on their paths to success.

About ETS

Founded as a non-profit in 1947, ETS advances quality and equity in education for people worldwide by creating assessments based on rigorous research. ETS serves individuals, educational institutions, and government agencies by providing customized solutions for teacher certification; English language learning; and elementary, secondary, and postsecondary education — as well as by conducting education research, analysis, and policy studies. ETS develops, administers, and scores more than 50 million tests annually — including the College Board® Advanced Placement Program® (AP®) exams, the *GRE*® General and Subject Tests, the National Assessment of Educational Progress (NAEP), and the *TOEFL*® and *TOEIC*® tests — in more than 180 countries, at over 9,000 locations worldwide.

About ITP

ITP is a non-profit research, development, and outreach unit in the College of Education at the University of Iowa. ITP's mission is to pursue:

- research that improves the practice of educational measurement
- design and development of assessments for a variety of purposes and audiences including educators; federal, state, and local governments; and academic institutions
- outreach that delivers assessment results and supports the use of assessment information by local, state, national, and international audiences

Test Content

The HiSET measures knowledge and skills in five subject areas: Language Arts – Reading, Language Arts – Writing, Mathematics, Science, and Social Studies.

Overview

The HiSET Program has been in operation since January 2014. This report provides volume and test performance information for examinees who took the HiSET between January 1, 2024, and December 31, 2024. The intent of this report is to help HiSET examinees, score users, and policy makers understand HiSET scores and to encourage appropriate score interpretation and use.

The HiSET Exam

HiSET examinees test in five content areas: Reading (Language Arts – Reading), Writing (Language Arts – Writing), Mathematics, Science, and Social Studies. [The Test at a Glance documents](#) — which are available for download on the [HiSET Website](#) — provide descriptions of the specifications behind current HiSET forms. Each subject-area test produces a score on a 1 – 20 reporting scale. We used standard setting studies (Tannenbaum & Reese, 2014) to recommend the minimum test scores (i.e., cut scores) needed for examinees to be considered qualified enough to earn a high school equivalency certificate. The tests consist of multiple-choice items, except for a direct writing task associated with the Writing test. Table 1 displays the number of items and time limits associated with each test.

Table 1. Number of Test Items and Time Limits

CONTENT AREA	NUMBER OF ITEMS	NUMBER OF MINUTES
Language Arts – Reading	50	65
Language Arts – Reading (Spanish)	50	80
Language Arts – Writing	60 + essay	120
Mathematics	55	90
Science	60	80
Social Studies	60	70

Scoring the HiSET Exam

With the exception of the essay portion of the Writing test, HiSET item responses receive a score of either correct or incorrect, and the sum of the correct responses becomes the raw score. There is no penalty for answering incorrectly. Raw scores on the Mathematics, Reading, Science, and Social Studies tests are converted directly to scores on the 1 – 20 reporting scale. In Writing, the scoring and scaling procedures differ slightly from the other four subtests due to having two distinct sections: the first section consists of 50 objectively scored multiple-choice items, and the second is an essay. Both sections are first scored and scaled independently. Number-correct scores on the 50-item multiple-choice section are converted to a 1-14 scale (rather than a 1-20 scale). The essay score is reported using a 0-6 scale that ranges from “little or no skill” to “proficient skill.” The total Writing scores are then computed as the sum of the two sections, placing them on the standard 1-20 scale.

Explanation of the Scaled Scores

Each of the five tests in the HiSET battery is scored on a scale of 1 – 20. In order to pass, an examinee must do all three of the following:

- achieve a score of at least 8* on each of the five individual tests.
- score at least 2 out of 6 on the essay portion of the Writing test.
- have a total combined score on all five subject tests (Battery) of at least 45.

*** 1) Minimum passing score is based on HiSET “pass” cut score requirements. Credential issuing agencies may set their own requirements. The pass rate data calculated in this report is calculated based on the HiSET “pass” score requirement. 2) The total Writing score is the sum of the multiple-choice section and the essay section. An examinee must achieve a total score of at least 8 as well as an essay score of at least 2 to pass the Writing test.**

Samples Reported

The samples in this report sometimes refer to examinees who have taken individual tests; and sometimes the samples refer to completers who have taken the full battery of tests. Descriptions of the samples reported are provided below.

Language. All samples unless otherwise noted are composed of both English and Spanish examinees. For battery tables, completers should have taken all five tests in Spanish to be considered Spanish completers.

Individual Tests. Tables which include test-specific information are based on the sample of examinees that have attempted the specific test. These tables report examinee first attempt and best attempt to pass the test in 2024.

Number of Examinees Tested. Tables reporting number of examinees tested provide a count of unique examinees attempting any individual test in 2024.

Battery Completion. Tables which include information about the battery consist of only examinees that have completed all five individual HiSET subtests — however, completers have not necessarily passed the battery or any individual test. A “completer” refers to an examinee that has completed the final test of their battery in 2024.

Battery Pass. Tables which include information about battery passers, consist of only examinees who have completed and passed the final test of their battery in 2024.

Examinee State. For the purposes of assigning examinees to a state, a completer is considered completed only in the state in which he or she most recently tested.

Identifying Questions. For certain identifying questions, examinees had the option to expressly indicate that they did not wish to provide a response, or to simply refrain from responding at all. Response rates reported include those who expressly indicated that they did not wish to respond. The percentages for responses reported in the tables, including those who expressly chose not to respond, sum to 100 percent.

Trend Data. In addition to the data reported for 2024, trend data comparing results for 2020 through 2024 are summarized in Table 26.

State Policies

State testing policies can be found at the following website:

<https://hiset.org/test-takers-requirements/#find-your-state>

HiSET Annual Report

The Standard Setting

Standard-setting studies (Tannenbaum & Reese, 2014) were conducted in 2014 to recommend minimum test scores (cut scores) needed to be considered qualified-enough to earn a high school equivalency certificate. These recommendations were shared with the HiSET Governing Board along with other data to inform decisions about where to set the operational cut scores; these other sources of data included the correspondence between HiSET scores and scores on the GED and the ACT, and previous passing rates on the HiSET test. Based on a thoughtful and inclusive review and discussion, the recommended cut scores were lowered. Adjustments to recommended cut scores often occur to better align cut scores with their intended use (Geisinger & McCormick, 2010). This practice is consistent with the understanding that the process of setting standards is similar to forming a policy, where the goal is to establish a reasonable and appropriate decision-rule (Cizek & Bunch, 2007; Kane, 2001; Kane & Tannenbaum, 2013).

Cizek, G. J., & Bunch, M.B. (2007). *Standard setting: A guide to establishing and evaluating performance standards on tests*. Thousand Oaks, CA: Sage.

Geisinger, K. F., & McCormick, C.A. (2010). Adopting cut scores: Post-standard-setting panel considerations for decision makers. *Educational Measurement: Issues and Practice*, 29, 38-44.

Kane, M. T. (2001). So much remains the same: Conception and status of validation in setting standards. In G. J. Cizek (Ed.), *Setting performance standards: Concepts, methods, and perspectives* (pp. 53-88). Mahwah, NJ: Lawrence Erlbaum.

Kane, M.T., & Tannenbaum, R.J. (2013). The role of construct maps in standard setting. *Measurement: Interdisciplinary Research & Perspectives*, 11, 177-180.

Tannenbaum, R.J., & Reese, C.M. (2014). *Recommending Passing Scores for the High School Equivalency Test (HiSET®)* (RM 14-06). Princeton, NJ: Educational Testing Service.

Table 2a. Examinees Who Took and Passed Individual Tests in English

EXAMINEES (ENGLISH)		READING		WRITING		MATH		SCIENCE		SOCIAL STUDIES	
State	Sample	Number Tested	Passing Rate (%)	Number Tested	Passing Rate (%)	Number Tested	Passing Rate (%)	Number Tested	Passing Rate (%)	Number Tested	Passing Rate (%)
AS	First	15	26.7	9	.	12	41.7	10	70	10	40
AS	All	22	22.7	12	58.3	14	42.9	11	63.6	15	33.3
CA	First	5,133	77.4	4,269	85.5	4,269	71.2	4,424	87.4	4,687	88.5
CA	All	6,385	71.3	4,955	82.7	5,888	66.9	4,893	85.4	5,315	86.1
CO	First	185	91.4	164	90.2	163	87.1	177	98.3	183	92.9
CO	All	208	88.9	185	88.6	193	81.3	186	97.3	201	91.5
GA	First	224	69.6	166	84.9	160	61.9	179	83.8	202	83.7
GA	All	279	62.4	183	82.5	215	60.9	203	80.3	225	82.2
HI	First	329	68.1	297	74.7	296	62.2	291	79.4	303	74.6
HI	All	477	58.5	397	68	445	56.9	348	73.3	423	66.2
IA	First	2,476	87.2	2,158	90.2	2,274	85.4	2,164	95.4	2,308	93.2
IA	All	2,817	84.5	2,380	88.5	2,625	82.9	2,279	94.3	2,521	91.5
IL	First	309	64.7	235	71.1	239	60.7	267	74.5	264	73.9
IL	All	430	54.7	299	68.2	375	56.5	329	67.5	344	68
IN	First	3,653	81.2	3,457	83.7	3,542	76.9	3,549	90.1	3,598	88.5
IN	All	4,440	75.6	4,089	80.4	4,460	73.9	3,852	88.3	4,065	85.9
LA	First	4,129	78.4	3,750	84.3	3,845	72.6	3,853	88.2	3,858	87.3
LA	All	5,354	71.2	4,512	80.8	5,359	67.3	4,315	85.9	4,530	84
MA	First	2,795	69.4	2,284	80.3	2,439	67.8	2,450	84.5	2,490	85.6
MA	All	3,921	60.4	2,829	77.2	3,457	63.3	2,854	81.7	3,003	81.2
ME	First	1,106	90.3	912	93	865	87.2	972	96.7	999	96
ME	All	1,204	87.6	972	92.3	996	84.2	1,004	96	1,046	95.1
MH	First	3	.	3	.	3	.	3	.	3	.
MH	All	5	.	3	.	3	.	4	.	4	.
MI	First	2,222	51.2	1,737	61.6	2,067	47.2	2,103	65.6	2,235	67.9
MI	All	3,667	42.8	2,568	57.3	3,488	45.6	2,939	59.7	3,140	63.1
MN	First	40	77.5	34	82.4	35	91.4	32	90.6	40	90
MN	All	48	77.1	40	80	37	91.9	33	90.9	44	88.6
MO	First	7,030	81.9	6,417	84.5	6,304	74.6	6,663	90.7	6,713	88.1
MO	All	8,646	76.1	7,737	80.4	8,656	69.4	7,339	88.3	7,807	84.1
MS	First	1,831	66.7	1,537	73.7	1,952	68.6	1,825	84.9	1,892	78.4
MS	All	2,508	58.5	2,010	67.8	2,736	63.3	2,132	80	2,406	72.9
MT	First	1,657	87.5	1,525	87.9	1,530	78.3	1,564	91	1,572	90.9
MT	All	1,922	82.2	1,770	84	1,980	72.3	1,711	88.4	1,782	87.7
NC	First	3,123	74.6	2,474	83.6	2,641	73.1	2,626	88.6	2,786	86.6
NC	All	4,087	67	2,991	79.6	3,546	67.1	2,936	85.6	3,224	82.4
NH	First	789	83.1	683	90	679	80.7	680	93.2	710	90.8
NH	All	922	79.3	753	89.2	853	76.7	730	90.7	795	88.3

NM	First	1,110	79.9	1,023	86	996	67.3	1,055	90.1	1,071	87.1
NM	All	1,406	73.3	1,219	81	1,427	62.4	1,184	86.7	1,262	83.5
NV	First	1,491	79.1	1,365	84.1	1,416	69.4	1,390	89.1	1,402	86.7
NV	All	1,841	73.5	1,605	81.2	1,941	65.5	1,525	87.2	1,611	84.5
OH	First	280	81.8	220	86.8	213	79.8	224	94.2	248	90.3
OH	All	375	67.5	276	78.6	275	76	241	92.9	285	87.4
OK	First	1,928	84.9	1,627	87.6	1,697	76.4	1,816	92.5	1,830	91.1
OK	All	2,282	79.3	1,875	85	2,203	72.5	1,949	90.8	2,025	89.3
PA	First	637	77.1	534	81.8	510	77.1	532	91	577	89.1
PA	All	809	69.5	645	78.9	673	71.2	588	88.9	659	86.3
TN	First	2,956	74	2,754	81	2,874	69.6	4,686	86	4,708	84.8
TN	All	3,947	65.8	3,330	77.9	3,906	65.5	5,361	83.1	5,628	80.9
WV	First	834	82.3	822	86.7	817	75.4	738	90.8	768	88.4
WV	All	1,026	78.2	1,006	82.8	1,152	71.3	830	88	925	85.6
WY	First	810	88	743	90.4	732	83.9	774	95	778	93.1
WY	All	936	83.3	828	88	899	80	816	94.2	861	90.7
Total	First	47,095	77.8	41,199	83.5	42,570	72.7	45,047	88.1	46,235	86.7
Total	All	59,964	70.5	49,469	79.7	57,802	67.8	50,592	85.1	54,146	83

*Passing rates are not reported when samples are under 10.

Table 2b. Examinees Who Took and Passed Individual Tests in Spanish

EXAMINEES (SPANISH)		READING		WRITING		MATH		SCIENCE		SOCIAL STUDIES	
State	Sample	Number Tested	Passing Rate (%)	Number Tested	Passing Rate (%)	Number Tested	Passing Rate (%)	Number Tested	Passing Rate (%)	Number Tested	Passing Rate (%)
CA	First	2,607	69.2	2,236	77.8	2,105	64.9	2,277	77.6	2,419	82.6
CA	All	3,771	59.8	2,826	74	3,134	61.4	2,961	72.4	3,003	79.1
CO	First	14	64.3	14	78.6	18	72.2	17	70.6	11	81.8
CO	All	19	57.9	16	81.3	20	65	24	62.5	15	80
GA	First	3	.	0	.	0	.	0	.	0	.
GA	All	3	.	0	.	0	.	0	.	0	.
HI	First	9	.	10	80	9	.	9	.	8	.
HI	All	10	60	10	80	13	38.5	9	.	9	.
IA	First	33	84.8	38	89.5	34	58.8	40	87.5	33	93.9
IA	All	47	76.6	50	80	57	54.4	45	82.2	34	94.1
IL	First	8	.	6	.	6	.	7	.	5	.
IL	All	9	.	6	.	7	.	7	.	6	.
IN	First	108	71.3	98	72.4	105	55.2	98	72.4	103	84.5
IN	All	150	70.7	128	72.7	157	56.7	115	73.9	120	84.2
LA	First	122	65.6	96	82.3	90	64.4	96	71.9	105	77.1
LA	All	164	61.6	126	77	143	58.7	126	67.5	130	75.4
MA	First	278	47.8	206	64.1	188	46.3	200	63.5	251	63.3
MA	All	501	40.5	316	59.5	373	45	282	58.5	363	60.3
MI	First	22	36.4	17	41.2	17	35.3	22	50	22	54.5
MI	All	44	34.1	29	37.9	31	38.7	38	34.2	31	54.8
MN	First	1	.	1	.	1	.	1	.	1	.
MN	All	1	.	1	.	3	.	2	.	1	.
MO	First	35	60	31	61.3	31	64.5	33	69.7	26	76.9
MO	All	45	57.8	37	59.5	36	69.4	38	60.5	34	61.8
MS	First	11	63.6	10	40	13	61.5	11	81.8	11	81.8
MS	All	16	62.5	18	38.9	19	63.2	15	80	18	66.7
MT	First	10	90	10	50	4	.	7	.	4	.
MT	All	11	90.9	13	46.2	4	.	7	.	5	.
NC	First	220	66.4	173	79.8	151	63.6	174	79.3	197	76.1
NC	All	334	56.6	244	71.3	252	56.3	232	70.3	258	70.5
NH	First	4	.	2	.	2	.	2	.	1	.
NH	All	6	.	4	.	3	.	2	.	1	.
NM	First	158	70.9	137	70.1	118	62.7	133	75.9	127	84.3

NM	All	208	64.4	173	65.3	164	61	164	72	149	80.5
NV	First	79	78.5	73	80.8	68	58.8	74	82.4	73	87.7
NV	All	104	71.2	100	74	102	57.8	90	76.7	81	84
OH	First	2	.	0	.	0	.	3	.	3	.
OH	All	8	.	0	.	0	.	8	.	3	.
OK	First	204	61.8	210	71.4	211	61.1	221	74.7	173	80.9
OK	All	324	51.9	277	67.9	336	54.8	291	68.4	260	70.4
PA	First	140	61.4	128	74.2	113	65.5	112	76.8	123	75.6
PA	All	207	57	159	69.8	157	58.6	136	75.7	150	74.7
TN	First	187	65.8	150	76.7	127	64.6	184	80.4	202	76.2
TN	All	288	56.6	187	71.1	181	58.6	250	72.8	269	70.6
WV	First	3	.	3	.	4	.	4	.	5	.
WV	All	7	.	4	.	8	.	6	.	8	.
WY	First	4	.	3	.	4	.	6	.	3	.
WY	All	5	.	3	.	6	.	6	.	3	.
Total	First	4,262	66.9	3,652	76	3,419	62.9	3,731	76.5	3,906	80.4
Total	All	6,282	58	4,727	71.6	5,206	58.9	4,854	71.1	4,951	76.1

*Passing rates are not reported when samples are under 10.

A total of 72,409 examinees tested in English only in 2024.

Table 3a. Number of Examinees Tested in English in 2024

STATE	NUMBER TESTED
AS	22
CA	7,522
CO	261
GA	286
HI	443
IA	3,608
IL	505
IN	4,725
LA	6,059
MA	4,755
ME	1,543
MH	3
MI	4,173
MN	47
MO	9,710
MS	3,382
MT	2,381
NC	4,863
NH	1,134
NM	1,548
NV	1,970
OH	436
OK	2,947
PA	1,035
TN	6,518
WV	1,517
WY	1,016
Total	72,409

*Tables 3a and 3b combined reflect all examinees testing in 2024. An examinee is either counted as tested in English only (3a) or having tested in Spanish at least once (3b).

A total of 7,494 examinees tested in Spanish in 2024 on at least one individual test.

Table 3b. Number of Examinees Tested in Spanish in 2024

STATE	NUMBER TESTED
CA	4,382
CO	38
GA	4
HI	11
IA	93
IL	14
IN	176
LA	215
MA	568
MI	57
MN	3
MO	78
MS	30
MT	14
NC	419
NH	8
NM	224
NV	110
OH	14
OK	489
PA	191
TN	337
WV	9
WY	10
Total	7,494

*Tables 3a and 3b combined reflect all examinees testing in 2024. An examinee is either counted as test in English only (3a) or having tested in Spanish at least once (3b).

A total of 37,789 examinees completed the full battery in 2024 completely or partially in English. The completion rate is calculated as the number of examinees who completed the battery in 2024 divided by all examinees in 2024 who did not previously complete the battery in a prior year.

Table 4a. Number of Batteries Completed in English in 2024

STATE	NUMBER COMPLETED	NUMBER TESTED MINUS PRIOR YEAR COMPLETERS	COMPLETION RATE (%)
AS	6	20	30
CA	3,905	6,776	57.6
CO	153	252	60.7
GA	141	275	51.3
HI	281	380	73.9
IA	1,978	3,535	56
IL	208	449	46.3
IN	3,236	4,294	75.4
LA	3,557	5,233	68
MA	2,037	4,266	47.7
ME	827	1,506	54.9
MH	3	3	.
MI	1,494	3,795	39.4
MN	30	46	65.2
MO	6,030	8,852	68.1
MS	1,306	3,137	41.6
MT	1,448	2,202	65.8
NC	2,202	4,529	48.6
NH	634	1,055	60.1
NM	913	1,389	65.7
NV	1,291	1,795	71.9
OH	198	401	49.4
OK	1,525	2,720	56.1
PA	464	944	49.2
TN	2,369	5,846	40.5
WV	855	1,377	62.1
WY	698	949	73.6
Total	37,789	66,026	57.2

*Completion rates are not reported when samples are under 10.

*Examinees completing all five tests of their battery in Spanish are reported in Table 4b.

A total of 3,277 examinees completed the full battery in 2024 in Spanish. Examinees are only considered Spanish completers if all five tests in their battery were taken in Spanish. The completion rate is calculated as the number of examinees who completed the battery in 2024 divided by all examinees in 2024 who did not previously complete the battery in a prior year.

Table 4b. Number of Batteries Completed in Spanish in 2024

STATE	NUMBER COMPLETED	NUMBER TESTED MINUS PRIOR YEAR COMPLETERS	COMPLETION RATE (%)
CA	2,014	3,844	52.4
CO	9	35	25.7
GA	0	4	.
HI	8	11	72.7
IA	41	86	47.7
IL	5	12	41.7
IN	115	152	75.7
LA	93	183	50.8
MA	176	472	37.3
MI	17	53	32.1
MN	1	3	.
MO	37	72	51.4
MS	17	27	63
MT	6	14	42.9
NC	132	371	35.6
NH	3	8	.
NM	113	205	55.1
NV	75	93	80.6
OH	3	10	30
OK	172	432	39.8
PA	107	171	62.6
TN	123	305	40.3
WV	5	8	.
WY	5	9	.
Total	3,277	6,580	49.8

*Completion rates are not reported when samples are under 10.

A total of 37,789 examinees passed the full battery in 2024 completely or partially in English.

Table 5a. Batteries Completed and Passed in English in 2024

STATE	SAMPLE	NUMBER COMPLETED	NUMBER PASSED	PASSING RATE
AS	First Attempt	6	2	.
AS	Best Attempt	6	2	.
CA	First Attempt	3,905	2,098	53.7
CA	Best Attempt	3,905	3,087	79.1
CO	First Attempt	153	103	67.3
CO	Best Attempt	153	133	86.9
GA	First Attempt	141	69	48.9
GA	Best Attempt	141	107	75.9
HI	First Attempt	281	113	40.2
HI	Best Attempt	281	188	66.9
IA	First Attempt	1,978	1,491	75.4
IA	Best Attempt	1,978	1,858	93.9
IL	First Attempt	208	82	39.4
IL	Best Attempt	208	145	69.7
IN	First Attempt	3,236	1,912	59.1
IN	Best Attempt	3,236	2,606	80.5
LA	First Attempt	3,557	1,975	55.5
LA	Best Attempt	3,557	2,811	79
MA	First Attempt	2,037	999	49
MA	Best Attempt	2,037	1,565	76.8
ME	First Attempt	827	631	76.3
ME	Best Attempt	827	763	92.3
MH	First Attempt	3	1	.
MH	Best Attempt	3	2	.
MI	First Attempt	1,494	393	26.3
MI	Best Attempt	1,494	812	54.4
MN	First Attempt	30	19	63.3
MN	Best Attempt	30	28	93.3
MO	First Attempt	6,030	3,533	58.6
MO	Best Attempt	6,030	5,043	83.6
MS	First Attempt	1,306	592	45.3
MS	Best Attempt	1,306	942	72.1
MT	First Attempt	1,448	949	65.5
MT	Best Attempt	1,448	1,239	85.6
NC	First Attempt	2,202	1,201	54.5
NC	Best Attempt	2,202	1,745	79.2
NH	First Attempt	634	425	67

NH	Best Attempt	634	549	86.6
NM	First Attempt	913	487	53.3
NM	Best Attempt	913	697	76.3
NV	First Attempt	1,291	687	53.2
NV	Best Attempt	1,291	1,061	82.2
OH	First Attempt	198	124	62.6
OH	Best Attempt	198	166	83.8
OK	First Attempt	1,525	890	58.4
OK	Best Attempt	1,525	1,231	80.7
PA	First Attempt	464	261	56.3
PA	Best Attempt	464	375	80.8
TN	First Attempt	2,369	1,214	51.2
TN	Best Attempt	2,369	1,776	75
WV	First Attempt	855	510	59.6
WV	Best Attempt	855	751	87.8
WY	First Attempt	698	490	70.2
WY	Best Attempt	698	624	89.4
Total	First Attempt	37,789	21,251	56.2
Total	Best Attempt	37,789	30,306	80.2

*Passing rates are not reported when samples are under 10.

*Examinees completing all five tests of their battery in Spanish are reported in Table 5b.

A total of 3,277 examinees passed the full battery in 2024 in Spanish. Examinees are only considered Spanish completers if all the tests in their first battery were taken in Spanish.

Table 5b. Batteries Completed and Passed in Spanish in 2024

STATE	SAMPLE	NUMBER COMPLETED	NUMBER PASSED	PASSING RATE
CA	First Attempt	2,014	847	42.1
CA	Best Attempt	2,014	1,459	72.4
CO	First Attempt	9	3	.
CO	Best Attempt	9	4	.
HI	First Attempt	8	3	.
HI	Best Attempt	8	5	.
IA	First Attempt	41	19	46.3
IA	Best Attempt	41	37	90.2
IL	First Attempt	5	2	.
IL	Best Attempt	5	2	.
IN	First Attempt	115	37	32.2
IN	Best Attempt	115	84	73
LA	First Attempt	93	36	38.7
LA	Best Attempt	93	73	78.5
MA	First Attempt	176	30	17
MA	Best Attempt	176	104	59.1
MI	First Attempt	17	1	5.9
MI	Best Attempt	17	6	35.3
MN	First Attempt	1	0	.
MN	Best Attempt	1	0	.
MO	First Attempt	37	15	40.5
MO	Best Attempt	37	28	75.7
MS	First Attempt	17	2	11.8
MS	Best Attempt	17	8	47.1
MT	First Attempt	6	3	.
MT	Best Attempt	6	5	.
NC	First Attempt	132	52	39.4
NC	Best Attempt	132	94	71.2
NH	First Attempt	3	1	.
NH	Best Attempt	3	2	.
NM	First Attempt	113	50	44.2
NM	Best Attempt	113	76	67.3
NV	First Attempt	75	33	44
NV	Best Attempt	75	58	77.3
OH	First Attempt	3	0	.
OH	Best Attempt	3	0	.

OK	First Attempt	172	70	40.7
OK	Best Attempt	172	134	77.9
PA	First Attempt	107	37	34.6
PA	Best Attempt	107	71	66.4
TN	First Attempt	123	49	39.8
TN	Best Attempt	123	81	65.9
WV	First Attempt	5	2	.
WV	Best Attempt	5	5	.
WY	First Attempt	5	2	.
WY	Best Attempt	5	3	.
Total	First Attempt	3,277	1,294	39.5
Total	Best Attempt	3,277	2,339	71.4

*Passing rates are not reported when samples are under 10.

Some examinees who previously completed the battery but failed in previous years retested in 2024. A total of 7,297 examinees retested and 4,345 of these examinees passed the battery.

Table 6. Previous Years Failed Completers Who Passed in 2024

STATE	SAMPLE	NUMBER WHO PREVIOUSLY FAILED THE BATTERY PRIOR TO 2024 AND RETESTED IN 2024	NUMBER WHO PREVIOUSLY FAILED THE BATTERY (PRIOR TO 2024) AND PASSED IN 2024
AS	Best Attempt	2	1
CA	Best Attempt	1,284	763
CO	Best Attempt	12	6
GA	Best Attempt	11	4
HI	Best Attempt	63	34
IA	Best Attempt	80	59
IL	Best Attempt	58	24
IN	Best Attempt	455	290
LA	Best Attempt	858	533
MA	Best Attempt	585	298
ME	Best Attempt	37	26
MI	Best Attempt	382	215
MN	Best Attempt	1	1
MO	Best Attempt	864	582
MS	Best Attempt	248	151
MT	Best Attempt	179	108
NC	Best Attempt	382	218
NH	Best Attempt	79	61
NM	Best Attempt	178	96
NV	Best Attempt	192	109
OH	Best Attempt	39	19
OK	Best Attempt	284	175
PA	Best Attempt	111	58
TN	Best Attempt	704	364
WV	Best Attempt	141	98
WY	Best Attempt	68	52
Total	Best Attempt	7,297	4,345

Completers who self-reported being under age 16 or above age 90 were excluded from the sample. The average age of the total group was 25.9 years.

Table 7. Means, Standard Deviations, and Percentage of Completers by Age Group, by States, and Total

STATE	NUMBER COMPLETED	RESPONSE RATE (%)	AGE MEAN	AGE SD	16 TO 18 (%)	19 TO 24 (%)	25 TO 29 (%)	30 TO 34 (%)	35 TO 39 (%)	40 TO 49 (%)	50 TO 59 (%)	60+ (%)
AS	6	100	24	5.5
CA	5,919	99.6	31.3	11.8	15.8	22.5	11.6	12.8	11.8	16.6	7.7	1.2
CO	162	100	22.4	9.9	58.6	21.6	3.7	3.1	3.1	6.2	2.5	1.2
GA	141	100	27.7	10.4	21.3	29.8	10.6	14.2	9.9	10.6	2.8	0.7
HI	289	99.7	19.6	6.9	73.6	14.9	2.8	2.1	2.1	3.5	1	----
IA	2,019	99.8	23.7	7.8	32.6	35.7	12.7	8.3	4.8	4.7	1	0.1
IL	213	100	26	10.8	37.6	19.7	12.2	10.3	8.9	6.6	3.8	0.9
IN	3,351	97.8	25	9.9	34.9	28.1	11	9.6	6.4	6.3	2.8	0.7
LA	3,650	97.6	24.8	9.9	38.4	25.4	9.1	9.3	6.5	8.7	2.2	0.3
MA	2,213	100	27.5	10.3	22.4	29.1	12.7	11.2	10.2	10.9	2.8	0.8
ME	827	100	23.4	8.3	36.6	35.1	10.5	6.7	4.2	5.1	1.5	0.4
MH	3	100	20.3	2.5
MI	1,511	99.7	33	10.2	2.3	21.2	16.9	20.8	14.9	16.3	6.2	1.5
MN	31	100	28	10.1	3.2	54.8	9.7	3.2	9.7	19.4	----	----
MO	6,067	99.6	22	8.7	63.8	14.8	5.4	4.8	4.4	5.1	1.5	0.3
MS	1,323	98.4	24.6	10.3	41.8	24.3	9.6	6.9	6.5	7.5	2.1	1.2
MT	1,454	99.9	21	7.8	62.4	19.5	5.8	4.8	3	2.9	1.4	0.1
NC	2,334	98.2	26.7	10.4	28.3	26.9	11.1	12.5	7.7	9.9	3	0.7
NH	637	98.9	20.2	6.6	60.5	27.5	4.6	2.7	1.6	2.1	0.8	0.3
NM	1,026	100	23.8	9.2	42.9	26.7	7.7	8.3	6.1	6.2	1.9	0.2
NV	1,366	99.9	24.6	9.9	40.9	24.7	8.9	8.4	6.8	7	2.8	0.4
OH	201	100	27	9.1	14.9	35.3	15.4	16.4	8	8	1.5	0.5
OK	1,697	98.5	29.3	10.2	15.2	25.4	15.4	15.7	10.9	13.2	3.5	0.7
PA	571	98.6	29.2	10	10.7	31.1	17.8	12.6	9.8	14	3.4	0.7
TN	2,492	98	27.8	10.7	23.2	27.9	13.8	10.2	9.1	10.9	4.1	0.7
WV	860	99.4	21.8	8.1	60.8	17.7	6.1	5.7	3.7	4.2	1.8	----
WY	703	99.9	22.1	7.7	45.9	32.1	7.8	5.1	4.4	3.3	1.1	0.3
Total	41,066	99.1	25.9	10.4	35.5	24.4	10.2	9.6	7.5	9	3.2	0.6

* Response rates are not reported when samples are under 10.

* No responses for a given category are indicated by "—".

Of the completers who self-reported gender, 52.4 percent reported as male, 41.5 percent reported as female, 0.6 reported as non-binary, and 5.5 percent indicated that they did not wish to respond.

Table 8. Percentage of Completers by Gender, by States, and Total

STATE	NUMBER COMPLETED	RESPONSE RATE (%)	MALE (%)	FEMALE (%)	NON-BINARY (%)	CHOSE NOT TO RESPOND (%)
AS	6	100
CA	5,919	99.7	42.2	52.6	0.4	4.9
CO	162	100	51.9	45.7	----	2.5
GA	141	100	42.6	55.3	----	2.1
HI	289	100	59.9	39.8	0.3	----
IA	2,019	100	55.3	41	1.9	1.8
IL	213	100	38.5	54.5	1.4	5.6
IN	3,351	98.1	52	40.1	0.4	7.5
LA	3,650	97.6	59.1	39.4	0.3	1.2
MA	2,213	100	48.1	41.8	0.9	9.1
ME	827	100	49.3	43.2	1.8	5.7
MH	3	100
MI	1,511	99.8	73.5	10.3	0.1	16.1
MN	31	100	64.5	22.6	----	12.9
MO	6,067	99.7	52.7	39.2	0.7	7.4
MS	1,323	98.6	53.1	42.6	0.1	4.2
MT	1,454	100	56.3	41.2	0.7	1.9
NC	2,334	98.3	55.5	38.6	0.4	5.4
NH	637	98.9	51	38.6	1.1	9.4
NM	1,026	100	46.6	45.2	0.9	7.3
NV	1,366	100	54.7	39.8	0.2	5.3
OH	201	100	51.2	45.8	----	3
OK	1,697	98.5	52.8	44.4	0.5	2.3
PA	571	98.6	41.2	49.7	0.7	8.3
TN	2,492	98	52.2	42.9	0.2	4.8
WV	860	99.7	60.3	37.6	0.8	1.3
WY	703	99.9	55.6	39.2	1	4.3
Total	41,066	99.2	52.4	41.5	0.6	5.5

* Response rates are not reported when samples are under 10.

* No responses for a given category are indicated by “—”.

Of the completers who self-reported background, 57.8 percent reported as non-Hispanic, 19.3 percent reported as Hispanic, and 22.9 percent indicated that they did not wish to respond.

Table 9. Completers with Reported Hispanic Background

STATE	NUMBER COMPLETED	RESPONSE RATE (%)	NON-HISPANIC (%)	HISPANIC (%)	CHOSE NOT TO RESPOND (%)
AS	6	100	.	.	.
CA	5,919	99.7	17.4	59.1	23.5
CO	162	100	58.6	25.9	15.4
GA	141	100	80.9	8.5	10.6
HI	289	100	24.6	10.4	65.1
IA	2,019	100	75	14.9	10.1
IL	213	100	51.2	16.4	32.4
IN	3,351	98.1	66.6	14.2	19.1
LA	3,650	97.6	85	7	8.1
MA	2,213	99.9	48.4	26.3	25.3
ME	827	100	83.2	4.7	12.1
MH	3	100	.	.	.
MI	1,511	99.8	9.9	1.3	88.8
MN	31	100	51.6	9.7	38.7
MO	6,067	99.7	61.3	5.7	33
MS	1,323	98.6	85.4	3	11.7
MT	1,454	100	73.9	4.9	21.3
NC	2,334	98.2	65.3	15.4	19.3
NH	637	98.9	70.8	6.8	22.4
NM	1,026	100	34.4	41.2	24.4
NV	1,366	100	44.2	28.3	27.5
OH	201	100	87.6	5.5	7
OK	1,697	98.5	67.3	21.2	11.5
PA	571	98.6	50.1	30.4	19.5
TN	2,492	98	73.5	10.2	16.3
WV	860	99.7	91.4	3.4	5.3
WY	703	99.9	74.1	15.4	10.5
Total	41,066	99.2	57.8	19.3	22.9

* Response rates are not reported when samples are under 10.

* No responses for a given category are indicated by “—”.

Of the completers who self-reported race, 3.4 percent reported American Indian or Alaskan Native, 1.8 percent reported as Asian, 14.8 percent reported as Black or African American, 0.6 percent reported as Native Hawaiian or Other Pacific Islander, 50.6 percent reported as White, 8.5 percent reported as Other, and 25.1 percent indicated that they did not wish to respond. Examinees had the option to select multiple racial categories. Examinees who indicated being Hispanic had the option of separately reporting a racial identification indicated in this table. The underlying survey question on which this table is based did not include a Hispanic category, which may have led Hispanic examinees to choose “Other” or to not respond.

Table 10. Completers with Reported Race by States and Total

STATE	NUMBER COMPLETE	RESPONSE RATE (%)	AMERICAN INDIAN OR ALASKAN	ASIAN (%)	BLACK OR AFRICAN AMERICAN (%)	NATIVE HAWAIIAN OR OTHER	WHITE (%)	OTHER (%)	CHOSE NOT TO RESPOND (%)
AS	6	100	-	-	-	-	-	-	-
CA	5,919	99.6	1.5	3.6	4.6	0.7	34.2	24.2	35.2
CO	162	100	5.6	2.5	6.8	1.2	61.7	17.3	16
GA	141	100	2.1	2.8	49.6	0.7	36.9	3.5	9.9
HI	289	100	5.2	14.5	1.4	15.6	12.8	4.5	64.7
IA	2,019	100	4.5	1.8	15.5	0.3	69	3.4	11.2
IL	213	100	1.9	0.9	30.5	0.5	33.3	5.2	33.8
IN	3,351	98.1	1.4	2	13.4	0.4	61.7	6.6	18.3
LA	3,650	97.6	1.9	1	33	0.3	54.7	5.1	8.7
MA	2,213	99.7	1.3	2.8	19.9	0.5	39.9	12.1	30.4
ME	827	100	1.8	0.5	6.2	0.6	75	4.2	14
MH	3	100	-	-	-	-	-	-	-
MI	1,511	99.8	0.5	0.5	13.3	0.3	15.1	0.6	71.4
MN	31	100	9.7	3.2	29	----	32.3	6.5	29
MO	6,067	99.6	1.6	1.1	12.8	0.6	51.2	3.9	33.5
MS	1,323	98.4	0.8	0.6	29.8	0.2	57.7	2	11.8
MT	1,454	99.9	16.2	1.7	2.6	0.2	62.3	2.2	21
NC	2,334	97.6	2.1	0.7	24.5	0.3	44.5	11	22
NH	637	98.7	1.6	1.9	3.3	0.8	70.1	4.1	23.8
NM	1,026	100	15.9	0.6	2.6	0.4	44.2	9.7	31.6
NV	1,366	99.9	2.7	2.9	13.5	1.7	45.2	7.4	31.8
OH	201	100	3	5	29.4	----	64.7	5	5.5
OK	1,697	98.5	18.1	0.9	15.6	0.7	51.9	8.4	11.3
PA	571	98.2	0.5	1.2	18.5	----	39	17.6	27.1
TN	2,492	97.7	1.3	1.4	19.2	0.2	58.1	5	19.2
WV	860	99.7	1.5	0.5	9.3	0.8	85.9	2.1	5.1
WY	703	99.6	7.6	1.3	4	0.3	76.6	5.6	10.7
Total	41,066	99	3.4	1.8	14.8	0.6	50.6	8.5	25.1

* Response rates are not reported when samples are under 10.

* No responses for a given category are indicated by “—”.

Education level was self-reported by 26.6 percent of all completers, of which the majority (77.0 percent) had some high school– that is, 9th through 12th grade – education.

Table 11. Completers with Reported Education Level by States and Total

STATE	NUMBER COMPLETED	RESPONSE RATE (%)	5TH (%)	6TH (%)	7TH (%)	8TH (%)	9TH (%)	10TH (%)	11TH (%)	12TH (%)
AS	6	0
CA	5,919	21.4	16	1.7	1.3	4.1	12.4	17.1	26.9	20.5
CO	162	55.6	7.8	----	----	8.9	5.6	25.6	40	12.2
GA	141	75.2	6.6	----	1.9	4.7	11.3	26.4	29.2	19.8
HI	289	6.2	11.1	----	----	11.1	----	50	16.7	11.1
IA	2,019	31	17.8	0.5	0.5	4.5	13	25	33	5.9
IL	213	45.5	3.1	3.1	1	6.2	11.3	26.8	32	16.5
IN	3,351	9	66	0.3	0.7	2.6	3.3	11.2	10.6	5.3
LA	3,650	31.5	14.2	0.6	2	7	16.3	23.9	27.3	8.6
MA	2,213	44.7	16.7	0.9	0.6	3.7	15	24	28	11.1
ME	827	14.5	30.8	1.7	0.8	7.5	9.2	22.5	23.3	4.2
MH	3	0
MI	1,511	3.3	46	----	----	2	10	16	18	8
MN	31	74.2	39.1	----	----	----	4.3	17.4	30.4	8.7
MO	6,067	31.4	13.6	0.6	1	3.9	12.4	26.3	33.3	8.9
MS	1,323	26.4	19.2	0.3	4	8.3	18.3	22.9	17.2	9.7
MT	1,454	26	15.3	0.3	0.8	3.7	11.9	24.6	31.2	12.2
NC	2,334	37.5	7.4	0.7	2.2	8.6	21	29.2	23.6	7.3
NH	637	38.1	9.5	0.4	0.4	5.8	14.8	26.3	34.6	8.2
NM	1,026	33.6	7	0.9	1.4	5.8	18.3	28.1	23.5	15.1
NV	1,366	12.2	28.3	0.6	0.6	2.4	13.3	17.5	24.7	12.7
OH	201	61.2	3.3	1.6	----	5.7	14.6	26	34.1	14.6
OK	1,697	35	8.9	1	1.9	11.4	18	22.1	26.4	10.3
PA	571	41.5	8	0.4	----	10.5	10.1	22.4	34.6	13.9
TN	2,492	16.5	16.1	0.5	0.2	2.4	12	22	34.1	12.7
WV	860	21.9	30.3	----	----	4.3	12.8	20.2	28.7	3.7
WY	703	41.7	8.2	0.7	1.4	5.8	14.7	28.3	33.4	7.5
Total	41,066	26.6	15.5	0.8	1.2	5.5	14.1	23.7	28.4	10.8

* Response rates are not reported when samples are under 10.

* No responses for a given category are indicated by “—”.

Mother's education level was self-reported by 24.4 percent of all completers. Of the responses provided, 65.3 percent of completers indicated that their mother had some high school or higher, 22.1 percent of completers indicated grade school or less, and 12.7 percent indicated that they did not know.

Table 12. Completers with Reported Mother's Education Level by States and Total

STATE	NUMBER COMPLETE D	RESPONSE RATE (%)	GRADE SCHOOL OR LESS (%)	SOME HIGH SCHOOL (%)	HIGH SCHOOL (%)	SOME COLLEGE (%)	ASSOCIATE'S DEGREE (%)	BACHELO R'S DEGREE (%)	SOME GRADUATE SCHOOL OR HIGHER (%)	DO NOT KNOW (%)
AS	6	16.7
CA	5,919	20	34.2	10.2	16	10.6	3.4	5.5	5	15.2
CO	162	50.6	7.3	12.2	30.5	12.2	8.5	8.5	11	9.8
GA	141	78	6.4	18.2	25.5	12.7	3.6	9.1	3.6	20.9
HI	289	5.9	11.8	----	41.2	5.9	11.8	11.8	----	17.6
IA	2,019	28.3	23.1	9.1	23.5	12.8	5.4	7.2	5.1	13.8
IL	213	42.3	10	12.2	23.3	17.8	6.7	6.7	7.8	15.6
IN	3,351	8.9	67.1	5.4	10.1	5.4	3.7	3.7	2	2.7
LA	3,650	26.9	20.2	10.6	29.1	15	4.4	6	3.9	10.9
MA	2,213	42	25	11.7	20.8	11.1	4.1	6.9	5.5	15
ME	827	13.1	35.2	10.2	20.4	11.1	1.9	7.4	1.9	12
MH	3	0
MI	1,511	3.4	48.1	3.8	17.3	15.4	3.8	5.8	1.9	3.8
MN	31	67.7	52.4	4.8	28.6	----	4.8	4.8	----	4.8
MO	6,067	28.9	16.6	11.7	24.2	14.5	6.9	9.8	5.7	10.6
MS	1,323	24.4	22.9	13.9	25.1	13.9	3.4	5.3	2.2	13.3
MT	1,454	24.3	16.7	9	21.8	13.8	5.4	14.7	6.8	11.9
NC	2,334	34.8	13.4	10	26.4	17.1	8.2	5.9	4.4	14.5
NH	637	35.3	10.7	8	26.7	17.8	8.9	12.4	9.3	6.2
NM	1,026	30.9	12	9.8	25.2	14.2	5.4	12	6.9	14.5
NV	1,366	11.4	34.6	9	17.3	12.2	3.8	6.4	3.8	12.8
OH	201	56.2	6.2	8.8	26.5	18.6	11.5	8	7.1	13.3
OK	1,697	30.5	17	11.4	33.4	11.6	4.2	3.5	4.4	14.5
PA	571	35	19.5	12	31	9	4	5	4	15.5
TN	2,492	15.5	20.4	8.8	27.1	13.4	4.1	9.3	7	9.8
WV	860	18.1	40.4	5.8	24.4	8.3	5.1	3.8	1.3	10.9
WY	703	39.4	10.5	11.2	25.3	13.7	9	9.7	2.5	18.1
Total	41,066	24.4	22.1	10.5	23.8	13.1	5.4	7.5	5	12.7

* Response rates are not reported when samples are under 10.

* No responses for a given category are indicated by "—".

Father's education level was self-reported by 24.1 percent of all completers. Of the responses provided, 56.8 percent of completers indicated that their father had some high school or higher, 22.8 percent of completers indicated grade school or less, and 20.4 percent indicated that they did not know.

Table 13. Completers with Reported Father's Education Level by States and Total

STATE	NUMBER COMPLETED	RESPONSE RATE (%)	GRADE SCHOOL OR LESS (%)	SOME HIGH SCHOOL (%)	HIGH SCHOOL (%)	SOME COLLEGE (%)	ASSOCIATE'S DEGREE (%)	BACHELOR'S DEGREE (%)	SOME GRADUATE SCHOOL OR HIGHER	DO NOT KNOW (%)
AS	6	16.7
CA	5,919	19.8	33.2	8.5	18.7	6.8	1.9	5	5	20.8
CO	162	47.5	13	9.1	27.3	15.6	6.5	10.4	6.5	11.7
GA	141	78	10	12.7	30	11.8	----	5.5	2.7	27.3
HI	289	5.9	11.8	5.9	41.2	5.9	11.8	5.9	----	17.6
IA	2,019	27.9	24.7	9.2	28.8	8.9	2.7	3.9	2.7	19.2
IL	213	41.3	12.5	8	33	13.6	1.1	4.5	5.7	21.6
IN	3,351	8.8	68.6	5.1	10.8	6.1	0.7	0.7	1.4	6.8
LA	3,650	26.5	21.3	11.2	30.1	9.2	2.1	3.9	2.4	19.8
MA	2,213	41.2	25.2	11.5	22.6	8.3	2.4	4.5	3.2	22.2
ME	827	13.2	36.7	5.5	14.7	9.2	3.7	4.6	1.8	23.9
MH	3	0
MI	1,511	3.4	47.1	5.9	25.5	----	3.9	3.9	2	11.8
MN	31	67.7	52.4	9.5	19	4.8	----	9.5	----	4.8
MO	6,067	28.7	17.5	11.2	28.8	10.8	3.2	5.9	4	18.6
MS	1,323	23.8	25.1	14	24.8	11.1	1.9	1.6	1	20.6
MT	1,454	24.2	16.5	6	25	11.9	4.5	9.4	6.5	20.2
NC	2,334	34.7	14.9	13.1	25.8	12	2.7	3.6	2.5	25.4
NH	637	34.5	10	11.8	29.1	12.3	3.6	11.8	6.4	15
NM	1,026	30.3	12.2	9.6	28.6	10.6	3.2	6.8	4.2	24.8
NV	1,366	11.1	33.6	7.2	21.7	9.9	3.3	3.9	3.9	16.4
OH	201	56.7	7	11.4	35.1	10.5	1.8	3.5	2.6	28.1
OK	1,697	29.9	19.7	10.1	29.6	11.2	1.4	3	2.2	22.9
PA	571	35	20.5	12	30.5	6	1.5	2.5	3.5	23.5
TN	2,492	15.4	20.1	10.4	28.5	9.4	3.4	8.9	3.7	15.7
WV	860	18	40.6	6.5	23.9	4.5	1.9	1.9	0.6	20
WY	703	38.5	10	10.7	30.3	9.6	3.7	4.8	3	28
Total	41,066	24.1	22.8	10.3	26	9.6	2.6	4.9	3.4	20.4

* Response rates are not reported when samples are under 10.

* No responses for a given category are indicated by "—".

Employment status was self-reported by 26.9 percent of all completers. Of the responses provided, 32.8 percent were part-time, 27.3 percent were full-time, 24.9 percent were unemployed, and 15 percent were not in the labor force.

Table 14. Completers with Reported Employment Status by States and Total

STATE	NUMBER COMPLETED	RESPONSE RATE (%)	PART-TIME (%)	FULL-TIME (%)	UNEMPLOYED (%)	NOT IN LABOR FORCE (%)
AS	6	16.7
CA	5,919	21.9	31.8	26	25.3	16.8
CO	162	56.2	28.6	26.4	34.1	11
GA	141	78	18.2	29.1	34.5	18.2
HI	289	5.5	31.3	18.8	50	----
IA	2,019	30.6	33.5	32.9	23	10.5
IL	213	45.5	27.8	30.9	29.9	11.3
IN	3,351	9.1	72.9	14.7	7.8	4.6
LA	3,650	32.9	25.2	25.5	24	25.3
MA	2,213	45.3	34.9	28.7	27.2	9.1
ME	827	15.1	48	22.4	16.8	12.8
MH	3	0
MI	1,511	3.3	48	22	20	10
MN	31	64.5	60	20	15	5
MO	6,067	31.6	35.9	27.8	25.3	11
MS	1,323	25.5	40.9	20.8	25.8	12.5
MT	1,454	26.1	40.1	27.4	19	13.5
NC	2,334	38	23.1	29.1	29.4	18.4
NH	637	37.8	35.3	27	25.7	12
NM	1,026	33.9	29.9	22.7	33.3	14.1
NV	1,366	12	41.5	20.7	22.6	15.2
OH	201	61.7	16.9	35.5	35.5	12.1
OK	1,697	36.4	20.1	30.7	23.1	26.1
PA	571	40.1	18.8	42.8	25.8	12.7
TN	2,492	16.7	28.8	32.5	25.2	13.5
WV	860	21.3	47	14.8	23	15.3
WY	703	40.5	42.1	25.6	16.1	16.1
Total	41,066	26.9	32.8	27.3	24.9	15

* Response rates are not reported when samples are under 10.

* No responses for a given category are indicated by “—”.

Examinees were asked to choose the one best reason from a provided list for taking the test. The list in the table below contains: Technical School (TECH), Two-Year College (2-Yr College), Four-Year College (4-Yr College), Get a Job, Keep Current Job, Role Model, Satisfaction, Public Assist, Military (MIL), Early Release, Court Order, and Other. 25.2 percent of all completers reported their reasons for taking the test. For those who provided reasons, 53.6 percent of the examinees were taking the test to further their education, whether to enter a technical program, a two-year college, or a four-year college; 13.8 percent were taking the test to get a job; and 2.1 percent were taking the test to keep their current job.

Table 15. Completers with Reported Reasons for Taking the Test by States and Total

STATE	NUMBER COMPLETED	RESPONSE RATE (%)	TECH (%)	2-YR COLLEGE (%)	4-YR COLLEGE (%)	GET A JOB (%)	KEEP CURRENT JOB (%)	ROLE MODEL (%)	SATISFACTION (%)	PUBLIC ASSIST (%)	MIL (%)	EARLY RELEASE (%)	COURT ORDER (%)	OTHER (%)
AS	6	16.7
CA	5,919	20.6	29.5	14.4	13.2	16.5	2.5	2.8	11.6	0.2	2.1	0.8	0.1	6.2
CO	162	53.1	18.6	10.5	15.1	17.4	3.5	1.2	11.6	----	10.5	2.3	----	9.3
GA	141	78	30.9	7.3	14.5	10	2.7	3.6	17.3	----	5.5	1.8	1.8	4.5
HI	289	6.6	15.8	----	10.5	31.6	----	----	21.1	----	5.3	10.5	----	5.3
IA	2,019	29	28.4	13	9.9	12.3	1.7	3.4	20.5	0.2	2.2	0.3	1.2	6.8
IL	213	44.6	14.7	13.7	17.9	9.5	3.2	3.2	21.1	----	4.2	3.2	3.2	6.3
IN	3,351	9.1	70.7	5.9	3.9	7.9	2.3	0.7	5.3	----	0.7	0.7	0.3	1.6
LA	3,650	27.8	33.7	10.7	11.8	13	2.2	3.5	13.4	----	2.6	1.8	1.2	6.2
MA	2,213	43	30.3	15.4	14.3	13	1.7	3	14.3	0.2	2.3	0.2	----	5.3
ME	827	14.5	37.5	10.8	8.3	15	2.5	----	13.3	----	0.8	----	----	11.7
MH	3	0
MI	1,511	3.6	53.7	1.9	1.9	13	----	----	20.4	----	----	----	5.6	3.7
MN	31	67.7	42.9	19	9.5	4.8	4.8	4.8	14.3	----	----	----	----	----
MO	6,067	30	27.6	11.2	10.9	14.8	2.1	3.7	17.2	0.1	2.8	1.1	1.9	6.6
MS	1,323	25.3	36.1	19.1	10.1	12.8	1.2	2.7	10.4	0.6	2.4	0.3	1.2	3
MT	1,454	25	27.8	7.7	11.8	14.6	2.2	1.9	19	0.6	3.9	0.6	1.1	8.8
NC	2,334	35.7	20.6	17.8	9.7	11.6	1.2	4.8	21.1	----	3.4	1.1	0.4	8.3
NH	637	37.2	20.3	11	12.2	14.8	2.1	1.7	14.8	----	4.2	4.2	0.4	14.3
NM	1,026	32.1	21	12.5	17	15.8	2.7	3	17.9	----	1.2	----	0.9	7.9
NV	1,366	11.6	42.4	3.8	13.9	9.5	1.9	2.5	13.3	----	4.4	1.9	0.6	5.7
OH	201	56.7	15.8	10.5	10.5	14.9	3.5	5.3	25.4	----	3.5	----	0.9	9.6
OK	1,697	31.5	25.3	8.8	9.7	16.1	2.1	5.6	20	0.4	3.7	0.2	1.7	6.4
PA	571	36.3	17.4	12.6	15.5	12.6	2.9	7.7	23.2	1	1.9	----	----	5.3
TN	2,492	16.1	28.5	15.8	14.8	15.5	1.8	2.8	11.3	----	4	----	0.3	5.5
WV	860	19.2	41.2	4.8	7.9	11.5	1.8	0.6	16.4	----	1.8	1.8	0.6	11.5
WY	703	40.5	39.6	7	8.4	12.3	2.5	2.5	13.7	0.4	2.1	1.4	1.8	8.4
Total	41,066	25.2	29.8	12.2	11.6	13.8	2.1	3.3	15.8	0.2	2.8	0.9	0.9	6.7

* Response rates are not reported when samples are under 10.

* No responses for a given category are indicated by "—".

Examinees could select multiple responses to indicate how they prepared for the test. Of the completers reporting, the majority attended test preparation classes and/or were tutored (46.2 percent), followed by using an online or internet resource (30.4 percent), and buying a hard copy test preparation book (11.5 percent).

Table 16. Completers with Reported Ways of Preparing for the Test by States and Total

STATE	NUMBER COMPLETED	RESPONSE RATE (%)	HARD COPY BOOK (%)	EBOOK (%)	COMPUTER SOFTWARE (%)	ONLINE (%)	PREP. CLASS (%)	DID NOT PREPARE (%)
AS	6	16.7
CA	5,919	11.8	14	1.7	0.9	29.8	43.6	10.9
CO	162	39.5	18.8	----	----	51.6	20.3	9.4
GA	141	54.6	7.8	1.3	----	28.6	54.5	7.8
HI	289	3.8	----	----	----	36.4	36.4	27.3
IA	2,019	15.8	8.2	0.9	----	22.9	54.9	13.2
IL	213	31	10.6	----	----	48.5	36.4	4.5
IN	3,351	2.4	14.8	3.7	----	46.9	17.3	18.5
LA	3,650	17	10.6	1.1	----	33.5	45.3	9.8
MA	2,213	27.1	12.4	1.5	0.2	29.5	45.2	12.2
ME	827	7	6.9	1.7	----	13.8	56.9	20.7
MH	3	0
MI	1,511	1.7	16	----	----	40	24	20
MN	31	38.7	----	8.3	----	50	41.7	----
MO	6,067	18.5	11.5	0.6	0.3	32.3	43.3	12.2
MS	1,323	13.8	6.6	0.5	----	21.3	63.4	8.7
MT	1,454	16.1	19.7	2.1	0.4	40.2	25.2	12.8
NC	2,334	22.3	11.5	1	0.4	27.4	48.9	11.1
NH	637	23.5	16.7	2	----	34	32.7	14.7
NM	1,026	20.5	9.5	0.5	1	36.7	42.4	11.4
NV	1,366	6.5	20.2	1.1	2.2	29.2	34.8	12.4
OH	201	41.8	4.8	----	----	40.5	42.9	11.9
OK	1,697	23.9	5.2	1	0.5	21.9	68.7	3
PA	571	25.4	24.1	0.7	----	13.8	50.3	13.1
TN	2,492	14.2	10.5	3.1	0.6	36.5	43.3	6.8
WV	860	10.5	4.4	----	1.1	23.3	65.6	5.6
WY	703	21.3	7.3	1.3	----	19.3	56	16
Total	41,066	15.5	11.5	1.2	0.3	30.4	46.2	10.9

* Response rates are not reported when samples are under 10.

* No responses for a given category are indicated by “—”.

Table 17a. Reading Formats Administered

STATE	NUMBER TESTED	TEST CENTER, COMPUTER-BASED	PAPER - BASED	ONLINE PROCTORED, COMPUTER-BASED	ASL INTERPRETER	LARGE PRINT	PAPER EXAM	READER	SCREEN READER
AS	22	22	0	0	0	0	0	0	0
CA	9,840	6,115	2,885	840	0	9	3	4	9
CO	222	100	64	58	0	0	0	0	0
GA	281	223	0	58	0	0	0	0	0
HI	484	480	4	0	0	0	0	0	1
IA	2,845	2,636	200	9	0	0	1	14	1
IL	426	228	120	78	0	0	1	2	0
IN	4,484	3,929	439	116	1	3	1	51	20
LA	5,368	4,639	366	363	0	1	2	37	8
MA	4,314	2,462	826	1,026	0	7	2	19	5
ME	1,196	1,107	89	0	0	1	1	1	0
MH	5	0	5	0	0	0	0	0	0
MI	3,500	39	3,434	27	0	1	0	4	0
MN	49	30	0	19	0	0	0	0	1
MO	8,588	7,635	219	734	0	3	2	30	12
MS	2,432	1,956	418	58	1	2	0	48	4
MT	1,913	1,679	156	78	0	0	0	4	0
NC	4,051	2,314	1,625	112	0	2	0	9	8
NH	901	534	255	112	0	0	0	2	0
NM	1,601	1,411	125	65	0	0	0	5	1
NV	1,912	1,681	173	58	0	1	0	0	0
OH	379	308	24	47	0	0	1	1	0
OK	2,515	1,519	941	55	0	1	2	4	3
PA	942	364	498	80	0	0	0	3	1
TN	4,020	2,907	905	208	0	2	2	3	1
WV	1,024	910	114	0	0	0	0	5	11
WY	936	727	40	169	0	0	0	13	2
Total	64,250	45,955	13,925	4,370	2	33	18	259	88

Table 17b. Writing Formats Administered

STATE	NUMBER TESTED	TEST CENTER, COMPUTER-BASED	PAPER - BASED	ONLINE PROCTORED, COMPUTER-BASED	ASL INTERPRETER	LARGE PRINT	PAPER EXAM	READER	SCREEN READER
AS	12	12	0	0	0	0	0	0	0
CA	7,494	4,786	2,008	700	0	7	1	5	8
CO	198	95	47	56	0	0	0	0	0
GA	183	140	0	43	0	0	0	1	0
HI	405	404	1	0	0	0	0	0	0
IA	2,403	2,260	139	4	0	0	1	9	0
IL	290	165	64	61	0	0	1	2	0
IN	4,088	3,585	382	121	1	3	1	52	6
LA	4,471	3,903	279	289	0	0	2	27	9
MA	3,065	1,671	567	827	0	2	1	11	2
ME	961	903	58	0	0	1	0	2	0
MH	3	0	3	0	0	0	0	0	0
MI	2,413	30	2,362	21	0	1	0	8	0
MN	41	24	0	17	0	0	0	0	0
MO	7,701	6,861	166	674	0	5	0	30	9
MS	1,954	1,534	371	49	0	0	0	34	6
MT	1,759	1,581	115	63	0	0	1	6	0
NC	2,919	1,727	1,097	95	0	5	0	1	8
NH	735	459	169	107	0	0	0	0	0
NM	1,382	1,212	112	58	0	1	0	3	0
NV	1,680	1,505	118	57	0	2	0	0	1
OH	275	217	21	37	0	0	1	0	0
OK	2,032	1,254	737	41	0	0	2	1	3
PA	735	324	353	58	0	0	0	1	0
TN	3,292	2,412	685	195	0	2	2	2	0
WV	999	894	105	0	0	0	0	2	8
WY	823	645	40	138	0	0	0	6	0
Total	52,313	38,603	9,999	3,711	1	29	13	203	60

Table 17c. Math Formats Administered

STATE	NUMBER TESTED	TEST CENTER, COMPUTER-BASED	PAPER-BASED	ONLINE PROCTORED, COMPUTER-BASED	ASL INTERPRETER	LARGE PRINT	PAPER EXAM	READER	SCREEN READER
AS	14	14	0	0	0	0	0	0	0
CA	8,616	5,790	2,105	721	0	2	3	6	5
CO	208	90	60	58	0	0	0	1	0
GA	215	155	0	60	0	0	0	1	0
HI	457	451	6	0	0	0	0	0	0
IA	2,663	2,517	142	4	0	0	1	20	1
IL	373	205	85	83	0	0	1	5	0
IN	4,492	3,922	443	127	0	4	2	44	15
LA	5,342	4,681	311	350	0	2	1	45	10
MA	3,724	2,162	577	985	0	3	2	20	0
ME	990	942	48	0	0	1	1	0	0
MH	3	0	3	0	0	0	0	0	0
MI	3,071	25	3,024	22	0	1	0	1	1
MN	40	22	0	18	0	0	0	0	0
MO	8,619	7,664	184	771	0	3	0	43	8
MS	2,659	2,207	376	76	0	1	0	29	6
MT	1,959	1,701	172	86	0	0	0	2	0
NC	3,334	2,142	1,063	129	0	0	0	4	1
NH	827	531	180	116	0	0	0	1	1
NM	1,574	1,383	108	83	0	0	0	4	0
NV	2,006	1,819	120	67	0	0	1	0	0
OH	274	228	9	37	0	0	0	0	0
OK	2,389	1,537	792	60	0	1	3	4	0
PA	738	367	305	66	0	0	0	2	1
TN	3,843	2,946	691	206	0	2	2	3	0
WV	1,146	1,042	104	0	0	0	1	8	10
WY	897	701	56	140	0	0	0	10	0
Total	60,473	45,244	10,964	4,265	0	20	18	253	59

Table 17d. Science Formats Administered

STATE	NUMBER TESTED	TEST CENTER, COMPUTER-BASED	PAPER - BASED	ONLINE PROCTORED, COMPUTER-BASED	ASL INTERPRETER	LARGE PRINT	PAPER EXAM	READER	SCREEN READER
AS	11	11	0	0	0	0	0	0	0
CA	7,616	4,891	2,027	698	0	1	1	3	1
CO	208	87	61	60	0	0	0	0	0
GA	202	158	0	44	0	0	0	2	0
HI	357	357	0	0	0	0	0	0	0
IA	2,293	2,168	118	7	0	0	1	17	0
IL	324	167	93	64	0	0	1	3	0
IN	3,868	3,388	370	110	0	1	2	61	13
LA	4,302	3,769	240	293	0	1	3	27	10
MA	3,082	1,674	537	871	0	2	1	13	0
ME	998	946	52	0	0	0	1	0	0
MH	4	0	4	0	0	0	0	0	0
MI	2,798	35	2,742	21	0	0	0	4	0
MN	35	19	0	16	0	0	0	0	0
MO	7,287	6,471	194	622	0	3	1	31	10
MS	2,078	1,673	343	62	0	2	0	30	2
MT	1,707	1,503	132	72	0	0	0	5	0
NC	2,932	1,737	1,100	95	0	1	0	4	6
NH	713	444	178	91	0	0	0	1	0
NM	1,338	1,177	95	66	0	0	0	2	2
NV	1,594	1,420	128	46	0	1	0	1	0
OH	248	197	12	39	0	0	1	0	0
OK	2,171	1,311	817	43	0	0	1	1	2
PA	669	276	332	61	0	0	0	0	0
TN	5,193	3,801	1,147	245	0	2	3	7	0
WV	830	729	101	0	0	0	0	4	3
WY	813	645	34	134	0	0	0	7	0
Total	53,671	39,054	10,857	3,760	0	14	16	223	49

Table 17e. Social Studies Formats Administered

STATE	NUMBER TESTED	TEST CENTER, COMPUTER-BASED	PAPER - BASED	ONLINE PROCTORED, COMPUTER-BASED	ASL INTERPRETER	LARGE PRINT	PAPER EXAM	READER	SCREEN READER
AS	15	15	0	0	0	0	0	0	0
CA	8,063	5,092	2,268	703	0	0	1	4	1
CO	214	100	58	56	0	0	0	0	0
GA	225	175	0	50	0	0	0	1	0
HI	430	427	3	0	0	0	0	0	0
IA	2,544	2,389	152	3	0	0	0	26	0
IL	336	167	106	63	0	0	0	0	0
IN	4,082	3,579	389	114	0	3	2	54	15
LA	4,522	3,960	283	279	0	1	6	38	6
MA	3,307	1,866	560	881	0	5	1	13	0
ME	1,039	978	61	0	0	1	1	1	0
MH	4	0	4	0	0	0	0	0	0
MI	3,015	30	2,967	18	0	0	0	6	0
MN	45	26	0	19	0	0	0	0	0
MO	7,760	6,902	188	670	0	1	0	29	7
MS	2,361	1,959	341	61	0	0	0	31	4
MT	1,776	1,567	137	72	0	0	0	3	0
NC	3,253	1,950	1,206	97	0	2	2	3	2
NH	767	475	198	94	0	0	0	1	0
NM	1,400	1,236	100	64	0	0	1	2	2
NV	1,664	1,473	142	49	0	1	1	1	0
OH	288	235	13	40	0	0	0	1	0
OK	2,211	1,289	877	45	0	0	1	1	1
PA	769	298	395	76	0	0	0	2	0
TN	5,467	4,015	1,195	257	0	3	5	9	1
WV	923	828	95	0	0	0	0	4	9
WY	859	675	34	150	0	0	0	6	1
Total	57,339	41,706	11,772	3,861	0	17	21	236	49

Table 18. Summary Statistics for Individual Tests

EXAMINEES		READING			WRITING			MATH			SCIENCE			SOCIAL STUDIES		
State	Sample	Number	Mean	SD	Number	Mean	SD	Number	Mean	SD	Number	Mean	SD	Number	Mean	SD
AS	First	15	5.5	2.8	9	.	.	12	6.3	3.8	10	9	2.9	10	7.3	4.2
AS	All	22	5.4	2.	12	9.1	2.	14	6.3	3.	11	8.6	3	15	7.2	3.
CA	First	7,740	10.6	4.	6,505	11.2	3.	6,374	10.3	4.	6,701	11.6	4	7,106	12.9	4.
CA	All	10,15	9.8	4.	7,781	10.9	3.	9,022	9.6	4.	7,854	11.1	4.	8,318	12.4	4.
CO	First	199	13.8	4.	178	12.8	3.	181	13	4.	194	14.4	3.	194	15.5	4.
CO	All	227	13.2	4.	201	12.4	3.	213	12.2	5	210	14	4	216	14.9	4.
GA	First	227	10.2	4.	166	11	3.	160	10.2	5.	179	11.3	4	202	12.1	4.
GA	All	282	9.5	4.	183	10.8	3.	215	9.6	5.	203	11	4.	225	11.9	4.
HI	First	338	10.1	4.	307	10	3.	305	9.4	4.	300	11.3	4.	311	11.2	4.
HI	All	487	9	4.	407	9.5	3.	458	8.7	4.	357	10.6	4.	432	10.3	4.
IA	First	2,509	12.5	4.	2,196	12.2	3.	2,308	12.3	4.	2,204	14.1	3.	2,341	14.4	3.
IA	All	2,864	12	4.	2,430	12	3.	2,682	11.9	4.	2,324	13.9	3.	2,555	14.1	4.
IL	First	317	9.7	4.	241	10.4	3.	245	9.4	5.	274	10.9	4.	269	11.6	5
IL	All	439	8.8	4.	305	10	3.	382	8.8	5	336	10.2	4.	350	10.7	5
IN	First	3,761	11.5	4.	3,555	11.2	3.	3,647	11.1	4.	3,647	12.7	4	3,701	13.2	4.
IN	All	4,590	10.8	4.	4,217	10.9	3.	4,617	10.6	4.	3,967	12.4	4.	4,185	12.8	4.
LA	First	4,251	11	4.	3,846	11.2	3.	3,935	10.4	4.	3,949	12.2	3.	3,963	12.8	4.
LA	All	5,518	10.2	4.	4,638	10.8	3.	5,502	9.7	4.	4,441	11.8	4	4,660	12.3	4.
MA	First	3,073	10.1	4.	2,490	10.8	3.	2,627	10	4.	2,650	11.8	4.	2,741	12.5	4.
MA	All	4,422	9.1	4.	3,145	10.5	3.	3,830	9.3	4.	3,136	11.3	4.	3,366	11.8	4.
ME	First	1,106	13.3	4	912	12.7	3.	865	12.7	4.	972	14.5	3.	999	15.1	3.
ME	All	1,204	12.9	4.	972	12.6	3.	996	12.2	4.	1,004	14.4	3.	1,046	14.8	3.
MH	First	3	.	.	3	.	.	3	.	.	3	.	.	3	.	.
MH	All	5	.	.	3	.	.	3	.	.	4	.	.	4	.	.
MI	First	2,244	8.2	4.	1,754	9.3	3.	2,084	7.7	4	2,125	9.6	4.	2,257	10.4	4.
MI	All	3,711	7.4	4.	2,597	8.9	3.	3,519	7.4	3.	2,977	8.9	4	3,171	9.7	4.
MN	First	41	11.6	4.	35	12.3	3.	36	12.6	4.	33	13.4	4.	41	14	4.
MN	All	49	11.3	4.	41	11.7	3.	40	12.1	4.	35	13.4	4.	45	13.7	4.
MO	First	7,065	11.7	4.	6,448	11.4	3.	6,335	10.8	4.	6,696	12.9	4	6,739	13.4	4.
MO	All	8,691	11	4.	7,774	10.9	3.	8,692	10.1	4.	7,377	12.6	4.	7,841	12.8	4.
MS	First	1,842	9.7	4.	1,547	10.1	3.	1,965	9.9	4.	1,836	11.5	3.	1,903	11.4	4.
MS	All	2,524	8.9	4.	2,028	9.6	3.	2,755	9.3	4.	2,147	11	4	2,424	10.8	4.
MT	First	1,667	12.6	4.	1,535	11.9	3.	1,534	11.7	4.	1,571	13.6	4.	1,576	14	4.
MT	All	1,933	11.9	4.	1,783	11.5	3.	1,984	10.8	4.	1,718	13.2	4.	1,787	13.4	4.
NC	First	3,343	10.8	4.	2,647	11.2	3.	2,792	10.6	4.	2,800	12.2	4	2,983	12.9	4.
NC	All	4,421	9.9	4.	3,235	10.7	3.	3,798	9.8	4.	3,168	11.7	4.	3,482	12.3	4.
NH	First	793	12.6	4.	685	12.3	3.	681	11.8	4.	682	14.1	3.	711	14.4	4.

NH	All	928	11.9	4.	757	12.1	3.	856	11.2	4.	732	13.7	4.	796	13.9	4.
NM	First	1,268	11.2	4.	1,160	11.2	3.	1,114	10	4.	1,188	12.3	4	1,198	12.8	4.
NM	All	1,614	10.4	4.	1,392	10.7	3.	1,591	9.3	4.	1,348	11.8	4.	1,411	12.2	4.
NV	First	1,570	11.3	4.	1,438	11.4	3.	1,484	10.2	4.	1,464	12.5	4.	1,475	13	4.
NV	All	1,945	10.6	4.	1,705	11.1	3.	2,043	9.7	4.	1,615	12.2	4.	1,692	12.6	4.
OH	First	282	11.8	4.	220	11.7	3.	213	11.6	4.	227	13.3	3.	251	13.9	4.
OH	All	383	10.3	4.	276	11	3.	275	10.9	4.	249	12.9	4.	288	13.3	4.
OK	First	2,132	11.6	4.	1,837	11.5	3	1,908	10.6	4.	2,037	12.7	3.	2,003	13.6	4
OK	All	2,606	10.9	4.	2,152	11.2	3.	2,539	10	4.	2,240	12.3	3.	2,285	13.1	4.
PA	First	777	10.7	4.	662	11.2	3.	623	11.1	4.	644	12.4	4	700	13.2	4.
PA	All	1,016	9.9	4.	804	10.8	3.	830	10.4	4.	724	12	4.	809	12.7	4.
TN	First	3,143	10.6	4.	2,904	11.1	3.	3,001	10.2	4.	4,870	12.1	4.	4,910	12.9	4.
TN	All	4,235	9.7	4.	3,517	10.7	3.	4,087	9.6	4.	5,611	11.6	4.	5,897	12.2	4.
WV	First	837	11.7	4.	825	11.5	3.	821	10.6	4.	742	12.8	3.	773	13.2	4.
WV	All	1,033	11.1	4.	1,010	11.1	3.	1,160	10	4.	836	12.3	3.	933	12.6	4.
WY	First	814	12.7	4	746	12.2	3.	736	12.2	4.	780	13.9	3.	781	14.4	3.
WY	All	941	12.1	4.	831	11.9	3.	905	11.6	4.	822	13.7	3.	864	14	4.
Total	First	51,357	11.1	4.	44,851	11.2	3.	45,989	10.6	4.	48,778	12.4	4.	50,141	13	4.
Tot	All	66,24	10.2	4.	54,19	10.8	3.	63,00	9.9	4.	55,44	11.9	4.	59,09	12.4	4.

* Test summary statistics are not reported for samples fewer than 10.

The average battery scaled scores for the states ranged from 49.7 to 70.1 for first attempts and from 53.7 to 71.4 for best attempts. The average scaled score across all states was 60.2 for first attempts and 62.9 for best attempts.

Table 19. Summary Statistics for Examinees Completing all Five Tests (The Full Battery)

STATE	SAMPLE	NUMBER COMPLETED	SCALED SCORE MEAN	SCALED SCORE SD
AS	First Attempt	6	.	.
AS	Best Attempt	6	.	.
CA	First Attempt	5,919	58.3	15.6
CA	Best Attempt	5,919	61.3	13.6
CO	First Attempt	162	69.5	15.7
CO	Best Attempt	162	71.3	14.3
GA	First Attempt	141	58.6	17.2
GA	Best Attempt	141	61.8	15.1
HI	First Attempt	289	51.4	19.1
HI	Best Attempt	289	55.2	17.1
IA	First Attempt	2,019	67.6	14.2
IA	Best Attempt	2,019	69.1	12.7
IL	First Attempt	213	55.3	18.3
IL	Best Attempt	213	59.8	16
IN	First Attempt	3,351	60.8	15.9
IN	Best Attempt	3,351	63.2	14.2
LA	First Attempt	3,650	59	14.9
LA	Best Attempt	3,650	61.6	13.2
MA	First Attempt	2,213	58.3	16.7
MA	Best Attempt	2,213	62	14.2
ME	First Attempt	827	70.1	14.1
ME	Best Attempt	827	71.4	12.9
MH	First Attempt	3	.	.
MH	Best Attempt	3	.	.
MI	First Attempt	1,511	49.7	16.2
MI	Best Attempt	1,511	54.7	13.7
MN	First Attempt	31	67.7	14.5
MN	Best Attempt	31	69.4	13.7
MO	First Attempt	6,067	61.5	16.1
MO	Best Attempt	6,067	64.1	13.8
MS	First Attempt	1,323	55.3	16
MS	Best Attempt	1,323	58.4	14.1
MT	First Attempt	1,454	64.9	16.6
MT	Best Attempt	1,454	67.1	14.5
NC	First Attempt	2,334	60.2	15.4

NC	Best Attempt	2,334	62.9	13.2
NH	First Attempt	637	66.4	15.7
NH	Best Attempt	637	68.6	13.6
NM	First Attempt	1,026	58.9	16.2
NM	Best Attempt	1,026	61.5	14.1
NV	First Attempt	1,366	59.9	16.2
NV	Best Attempt	1,366	62.8	14.3
OH	First Attempt	201	64	15.1
OH	Best Attempt	201	66.1	13.3
OK	First Attempt	1,697	61.4	14.4
OK	Best Attempt	1,697	63.8	12.4
PA	First Attempt	571	60.9	15.9
PA	Best Attempt	571	63.6	14.1
TN	First Attempt	2,492	58.3	16.9
TN	Best Attempt	2,492	61.1	15
WV	First Attempt	860	60.4	15
WV	Best Attempt	860	63.1	12.9
WY	First Attempt	703	66.5	15
WY	Best Attempt	703	68.3	13.1
Total	First Attempt	41,066	60.2	16.2
Total	Best Attempt	41,066	62.9	14.1

* Battery summary statistics are not reported for samples fewer than 10.

Reported reason for testing is provided for Battery Passers. The list in the table below contains: Technical School (TECH), Two-Year College (2-Yr College), Four-Year College (4-Yr College), Get a Job, Keep Current Job, Role Model, Satisfaction, Public Assist, Military (MIL), Early Release, Court Order, and Other.

Table 20. Battery Passers with Reported Reason for Testing

STATE	NUMBER PASSED	RESPONSE RATE (%)	TECH (%)	2-YR COLLEGE (%)	4-YR COLLEGE (%)	GET A JOB (%)	KEEP CURRENT JOB (%)	ROLE MODEL (%)	SATIS-FACTION (%)	PUBLIC ASSIST (%)	MIL (%)	EARLY RELEASE (%)	COURT ORDER (%)	OTHER (%)
AS	2	0
CA	2,945	20.1	26.1	17.9	14.2	15.5	1.9	3.2	10.8	0.2	2.9	1	0.2	6.2
CO	106	51.9	16.4	10.9	12.7	16.4	3.6	1.8	12.7	----	14.5	1.8	----	9.1
GA	69	75.4	32.7	5.8	15.4	9.6	5.8	1.9	13.5	----	5.8	1.9	1.9	5.8
HI	116	4.3	----	----	20	40	----	----	----	----	20	----	----	20
IA	1,510	27.8	23.8	14	11.4	14	1.7	4	19.3	0.2	2.6	0.2	1	7.6
IL	84	57.1	10.4	16.7	18.8	10.4	4.2	2.1	20.8	----	2.1	2.1	4.2	8.3
IN	1,949	7.5	59.6	7.5	4.1	13	4.1	----	6.8	----	0.7	1.4	0.7	2.1
LA	2,011	25.4	27.2	12.3	14.3	16.2	2	3.1	12.9	----	3.1	1.4	1	6.5
MA	1,029	41	27.7	15.2	15.4	12.8	1.4	3.6	16.4	0.2	2.8	0.5	----	4
ME	631	13	31.7	12.2	11	13.4	2.4	----	15.9	----	1.2	----	----	12.2
MH	1	0
MI	394	5.8	39.1	4.3	4.3	17.4	----	----	30.4	----	----	----	----	4.3
MN	19	78.9	26.7	26.7	13.3	6.7	6.7	6.7	13.3	----	----	----	----	----
MO	3,548	31.1	24.2	11.4	12.9	15.9	1.4	3.4	18.8	----	3.2	0.7	1.1	7.2
MS	594	23.2	30.4	20.3	10.9	15.9	1.4	1.4	10.1	0.7	2.2	0.7	1.4	4.3
MT	952	25.4	20.2	7.9	13.2	13.6	2.9	1.7	22.7	0.8	4.1	0.4	0.8	11.6
NC	1,253	35.3	19.5	20.1	10.6	11.5	0.7	4.8	20.8	----	3.4	1.4	0.5	6.8
NH	426	35.4	19.2	11.3	11.3	12.6	1.3	0.7	17.9	----	4.6	4.6	----	16.6
NM	537	32.8	21	13.6	17.6	14.8	2.8	2.3	17.6	----	0.6	----	1.7	8
NV	720	11.1	40	2.5	18.8	12.5	1.3	1.3	15	----	3.8	----	----	5
OH	124	59.7	13.5	9.5	13.5	16.2	4.1	4.1	24.3	----	4.1	----	1.4	9.5
OK	960	31.1	24.4	10.4	11.7	14.4	2	6.4	19.4	----	4.3	----	1.7	5.4
PA	298	33.9	15.8	9.9	15.8	13.9	2	7.9	22.8	2	3	----	----	6.9
TN	1,263	19.3	25.4	15.2	18	17.2	1.6	2.9	9.4	----	5.3	----	----	4.9
WV	512	19.3	32.3	6.1	9.1	11.1	1	1	21.2	----	3	1	1	13.1
WY	492	39.8	37.2	8.2	8.2	14.3	3.1	2	14.3	0.5	1.5	1.5	1	8.2
Total	22,545	25.4	25.8	13.1	13	14.5	1.9	3.2	16.5	0.2	3.2	0.8	0.8	7

* Response rates are not reported when samples are under 10.

* No responses for a given category are indicated by "—".

Mean score and score standard deviation for each test are provided for examinees passing the Battery in 2024 on their first attempt.

Table 21. Battery Summary Statistics for Examinees Passing on Their First Attempt

EXAMINEES		READING		WRITING		MATH		SCIENCE		SOCIAL STUDIES		BATTERY	
State	Number Passed	Mean	SD	Mean	SD	Mean	SD	Mean	SD	Mean	SD	Mean	SD
AS	2
CA	2,945	13.4	3	13	2.4	13.1	3.4	13.9	3.1	15.2	3.1	68.5	11.4
CO	106	15.4	3	13.9	2.5	14.4	3.5	15.9	3	16.9	3.2	76.4	11.6
GA	69	14.4	3.4	12.8	2.8	13.8	4	14.3	3.2	15.7	3.4	71.1	13.8
HI	116	13.5	3.1	12.9	2.4	13.4	2.9	14.7	3.2	14.8	3.3	69.3	11.7
IA	1,510	14.2	2.9	13.3	2.4	13.9	3	15.3	2.8	15.8	3	72.5	10.9
IL	84	14	3.1	13.3	2.6	13.3	3.8	15.1	3.2	15.4	3.2	71.2	13
IN	1,949	13.8	3	12.8	2.5	13.4	3.2	14.8	3	15.2	3.2	70	11.2
LA	2,011	13.5	2.9	12.7	2.4	12.9	3.1	14.2	3	14.8	3.1	68.1	10.9
MA	1,029	13.8	3	13.1	2.6	13.4	3.4	14.8	3.1	15.4	3.2	70.4	12.1
ME	631	15	3.1	13.8	2.5	14	3.3	15.7	2.9	16.1	3.1	74.5	11.7
MH	1
MI	394	13.4	3	12.5	2.3	12.1	2.9	14.5	3.1	15.4	3.3	67.9	11.3
MN	19	14.6	2.8	13.6	2.7	14.2	4.2	15.4	2.9	16.4	3.2	74.2	12.9
MO	3,548	14	2.9	12.9	2.5	13.3	3.2	15	2.9	15.4	3.1	70.7	11.4
MS	594	13.3	3	12.5	2.5	13	3.1	14.3	2.9	14.2	3.4	67.2	11.1
MT	952	14.5	2.9	13.4	2.5	14.1	3.3	15.4	2.9	15.7	3.2	73.1	11.5
NC	1,253	13.7	3	12.7	2.4	13.2	3.2	14.6	3.1	15.1	3.2	69.3	11.3
NH	426	14.8	3	13.8	2.4	13.6	3.3	15.5	2.9	16.1	3.1	73.8	11.5
NM	537	13.9	2.9	13	2.5	12.8	3.3	14.5	3	15.1	3.2	69.3	11.6
NV	720	13.9	2.9	13.1	2.4	13.3	3.3	14.8	3	15.3	3.2	70.5	11.4
OH	124	14.2	3	13	2.6	13.6	3.2	15.2	3	15.9	3	71.8	11.2
OK	960	13.8	2.9	12.9	2.3	12.9	3.1	14.5	2.9	15.2	3	69.3	10.3
PA	298	13.7	3	13.1	2.4	13.7	3.5	14.5	3.3	15.5	3.1	70.6	11.9
TN	1,263	13.8	3.1	13.1	2.5	13.2	3.2	14.4	3.2	15.3	3.3	69.9	12.1
WV	512	13.8	2.8	12.7	2.6	12.9	3.2	14.6	2.9	14.8	3.2	68.8	11.3
WY	492	14.4	2.7	13.4	2.3	14	3.2	15.3	2.8	15.7	2.9	72.8	10.4
Total	22,545	13.9	3	13	2.5	13.3	3.2	14.7	3	15.3	3.2	70.2	11.5

* Battery summary statistics are not reported for state samples fewer than 10.

Completers who self-reported being under age 16 or above age 90 were excluded from the sample.

Table 22. Battery Passing Rates by Reported Age for Examinees Passing on Their First Attempt

STATE	NUMBER COMPLETED	PASSING RATE (%)	16 TO 18 (%)	19 TO 24 (%)	25 TO 29 (%)	30 TO 34 (%)	35 TO 39 (%)	40 TO 49 (%)	50 TO 59 (%)	60+ (%)
AS	6	33.3
CA	5,919	49.8	55.1	56.6	56.4	53.1	45.7	40.6	33.1	20.3
CO	162	65.4	69.5	77.1	33.3	60	40	50	25	0
GA	141	48.9	53.3	42.9	60	60	50	40	25	0
HI	289	40.1	40.1	39.5	75	33.3	16.7	30	33.3	----
IA	2,019	74.8	72.7	79	73.8	69.6	75	68.4	76.2	66.7
IL	213	39.4	35	57.1	46.2	27.3	52.6	28.6	0	0
IN	3,351	58.2	59	65.6	62.8	57.3	42.4	45.2	29	43.5
LA	3,650	55.1	63.7	53.7	49.7	49.7	43.8	38.9	32.9	44.4
MA	2,213	46.5	59.8	51.2	52.5	42.5	31.6	24.9	27	17.6
ME	827	76.3	75.6	81.4	77	69.1	51.4	83.3	58.3	33.3
MH	3	33.3
MI	1,511	26.1	35.3	30.9	27.1	24.9	27.7	18.7	20.4	27.3
MN	31	61.3	100	64.7	66.7	100	66.7	33.3	----	----
MO	6,067	58.5	57.8	61.1	65.9	60.1	57.6	56.8	40.9	31.6
MS	1,323	44.9	47.6	50.8	41.6	52.2	24.7	33.7	25.9	25
MT	1,454	65.5	65.7	71.7	72.9	55.7	52.3	52.4	30	0
NC	2,334	53.7	59	59.9	53.1	50.3	45.5	41.7	31.9	13.3
NH	637	66.9	70.6	64.2	65.5	64.7	40	46.2	20	0
NM	1,026	52.3	57.7	54.7	50.6	49.4	30.2	42.2	26.3	0
NV	1,366	52.7	57	53.1	55.7	47.8	44.1	43.8	42.1	20
OH	201	61.7	66.7	71.8	71	51.5	37.5	50	0	0
OK	1,697	56.6	64.6	67.1	60.3	53.2	50.5	38.5	36.2	18.2
PA	571	52.2	61.7	66.3	53	45.1	43.6	27.8	42.1	0
TN	2,492	50.7	53.6	59.5	52.8	43.5	45.3	35.2	27.3	33.3
WV	860	59.5	60.8	63.6	55.8	51	59.4	50	33.3	----
WY	703	70	70.8	72	72.7	61.1	64.5	47.8	75	100
Total	41,066	54.9	59.9	60.5	56.4	50.4	44.6	40.3	32.7	25.3

* Battery passing rates are not reported for state samples fewer than 10.

* No responses for a given category are indicated by "—".

Table 23. Battery Passing Rates by Reported Gender for Examinees Passing on Their First Attempt

STATE	NUMBER COMPLETED	PASS RATE (%)	MALE (%)	FEMALE (%)	NON-BINARY (%)	CHOSE NOT TO RESPOND (%)
AS	6	33.3
CA	5,919	49.8	55	45	68.2	51.9
CO	162	65.4	71.4	58.1	----	75
GA	141	48.9	55	43.6	----	66.7
HI	289	40.1	40.5	40	0	----
IA	2,019	74.8	74.1	75	89.5	75.7
IL	213	39.4	43.9	35.3	100	33.3
IN	3,351	58.2	61.1	53.6	69.2	62.9
LA	3,650	55.1	54	54.7	81.8	57.1
MA	2,213	46.5	51.5	40.2	66.7	47
ME	827	76.3	78.2	73.7	100	72.3
MH	3	33.3
MI	1,511	26.1	25.4	32.9	0	23.9
MN	31	61.3	60	71.4	----	50
MO	6,067	58.5	59.8	57.4	85.4	52.3
MS	1,323	44.9	42.9	47.3	0	43.6
MT	1,454	65.5	64.7	66.1	70	74.1
NC	2,334	53.7	53.1	54.2	90	50.8
NH	637	66.9	68.8	64.2	85.7	64.4
NM	1,026	52.3	55.6	48.9	66.7	50.7
NV	1,366	52.7	55	49.9	66.7	49.3
OH	201	61.7	66	56.5	----	66.7
OK	1,697	56.6	58.4	54	62.5	56.4
PA	571	52.2	57.8	47.1	50	51.1
TN	2,492	50.7	49.9	51.8	100	35.9
WV	860	59.5	59.8	57.1	100	90.9
WY	703	70	70.5	69.1	100	63.3
Total	41,066	54.9	56.1	53.3	80.1	50.4

* Battery passing rates are not reported for state samples fewer than 10.

* No responses for a given category are indicated by "—".

Table 24. Battery Passing Rates by Reported Hispanic Background for Examinees Passing on Their First Attempt

STATE	NUMBER COMPLETED	PASSING RATE (%)	NON-HISPANIC (%)	HISPANIC (%)	CHOSE NOT TO RESPOND (%)
AS	6	33.3	.	.	.
CA	5,919	49.8	55.1	47.3	51.4
CO	162	65.4	75.8	52.4	48
GA	141	48.9	48.2	50	53.3
HI	289	40.1	50.7	56.7	33.5
IA	2,019	74.8	74.7	72.3	79.4
IL	213	39.4	45.9	45.7	26.1
IN	3,351	58.2	60.5	49.4	57.1
LA	3,650	55.1	54.8	52.8	51.7
MA	2,213	46.5	53.6	37	42.9
ME	827	76.3	77.3	74.4	70
MH	3	33.3	.	.	.
MI	1,511	26.1	38.3	35	24.4
MN	31	61.3	75	66.7	41.7
MO	6,067	58.5	60.3	56	55.5
MS	1,323	44.9	46.7	41	31.6
MT	1,454	65.5	65.6	69	64.1
NC	2,334	53.7	56	49.3	49.2
NH	637	66.9	67.3	53.5	69.5
NM	1,026	52.3	53.5	54.6	46.8
NV	1,366	52.7	56.8	49.6	49.3
OH	201	61.7	63.1	81.8	28.6
OK	1,697	56.6	59.4	46.8	57.3
PA	571	52.2	57.4	44.4	49.1
TN	2,492	50.7	52.7	48.2	39.9
WV	860	59.5	59.8	55.2	57.8
WY	703	70	71	68.5	64.9
Total	41,066	54.9	59.1	49.5	48.3

* Battery passing rates are not reported for state samples fewer than 10.

* No responses for a given category are indicated by “—”.

Examinees had the option to select multiple racial categories. Examinees who indicated being Hispanic had the option of separately reporting a racial identification indicated in this table. The underlying survey question on which this table is based did not include a Hispanic category, which may have led Hispanic examinees to choose “Other” or to not respond.

Table 25. Battery Passing Rates by Reported Races for Examinees Passing on Their First Attempt

STATE	NUMBER COMPLETED	PASSING RATE	AMERICAN INDIAN (%)	ASIAN (%)	AFRICAN AMERICAN (%)	PACIFIC ISLANDER (%)	WHITE (%)	OTHER (%)	CHOSE NOT TO RESPOND
AS	6	33.3
CA	5,919	49.8	50	48.3	46.3	48.7	53.3	47.4	48.1
CO	162	65.4	44.4	100	54.5	50	71	60.7	50
GA	141	48.9	33.3	75	41.4	0	55.8	80	57.1
HI	289	40.1	60	50	100	42.2	62.2	53.8	33.7
IA	2,019	74.8	65.9	62.2	57.1	50	79.5	75	77.4
IL	213	39.4	0	50	30.8	100	60.6	54.5	25
IN	3,351	58.2	60.9	42.4	42	41.7	63.4	50	57.7
LA	3,650	55.1	51.5	73.5	38.9	72.7	63.9	49.2	54
MA	2,213	46.5	42.9	62.9	37.1	33.3	58.8	40.1	38.2
ME	827	76.3	66.7	50	54.9	60	79.8	60	73.3
MH	3	33.3
MI	1,511	26.1	57.1	71.4	15	25	40.4	77.8	24
MN	31	61.3	66.7	100	55.6	----	70	100	44.4
MO	6,067	58.5	54.1	69.7	40.4	43.2	65.5	54.9	54.9
MS	1,323	44.9	63.6	62.5	34.3	50	52.7	30.8	32
MT	1,454	65.5	44.9	80	63.2	100	70.7	68.8	63
NC	2,334	53.7	60.4	46.7	37.9	71.4	66.4	45.2	49.6
NH	637	66.9	80	83.3	47.6	60	67.8	57.7	68
NM	1,026	52.3	42.9	33.3	59.3	75	61.7	52	46.9
NV	1,366	52.7	40.5	56.4	45.7	65.2	59.5	52.5	47
OH	201	61.7	66.7	60	42.4	----	71.5	40	63.6
OK	1,697	56.6	57.3	66.7	50	50	60.7	47.1	53.4
PA	571	52.2	0	42.9	43.3	----	63	43.4	48
TN	2,492	50.7	80.6	48.6	35.1	50	58.5	47.5	40.9
WV	860	59.5	76.9	50	46.3	42.9	61.1	55.6	59.1
WY	703	70	66	55.6	50	50	72.8	61.5	65.3
Total	41,066	54.9	53.6	56.4	40.4	49.4	63.7	48.9	48

* Battery passing rates are not reported for state samples fewer than 10.

* No responses for a given category are indicated by “—”.

Compared to 2023, overall, number tested decreased in 2024. Percent passing (first attempt) slightly decreased from 2023 (55.0 percent) to 2024 (54.9 percent).

Table 26. Year to Year Comparison of Examinees

STATE	TOTAL NUMBER OF EXAMINEES TESTED					PERCENT OF COMPLETERS PASSING BATTERY				
	2020	2021	2022	2023	2024	2020	2021	2022	2023	2024
AA	.	72	149	.	.	.	74.6	77.3	.	.
AS	10	25	35	22	22	11.1	12.5	15.8	0.0	33.3
CA	7,749	8,794	9,295	10,745	11,904	56.7	51.7	51.2	48.1	49.8
CO	260	361	329	326	299	76.9	63.6	69.9	66.7	65.4
GA	7	80	153	164	290	.	60.5	54.1	56.8	48.9
HI	479	505	377	520	454	52.9	46.8	53.8	40.2	40.1
IA	2,134	2,693	2,863	3,334	3,701	82.0	82.4	78.3	73.9	74.8
IL	410	572	549	533	519	44.9	42.2	46.1	37.3	39.4
IN	.	2,076	6,536	6,419	4,901	.	55.6	58.2	56.1	58.2
LA	3,996	4,905	5,365	6,270	6,274	55.4	52.5	58.5	54.4	55.1
MA	2,679	3,750	3,613	4,558	5,323	58.9	52.6	56.6	47.1	46.5
ME	1,087	1,240	1,261	1,500	1,543	77.4	78.6	80.7	77.7	76.3
MH	1	2	5	9	3
MI	73	209	641	3,117	4,230	56.1	47.9	52.0	29.6	26.1
MN	.	.	.	16	50	.	.	.	0.0	61.3
MO	7,139	9,393	9,665	10,444	9,788	65.9	60.7	64.1	60.1	58.5
MP	38	44	44	5	.	73.3	66.7	81.8	.	.
MS	1,748	2,230	2,377	3,065	3,412	53.7	49.9	49.8	43.1	44.9
MT	1,543	2,056	2,180	2,555	2,395	70.4	65.7	66.1	63.1	65.5
NC	3,139	3,477	3,995	4,665	5,282	60.0	55.5	57.9	56.9	53.7
NH	633	1,041	1,170	1,288	1,142	77.3	74.7	74.4	68.6	66.9
NJ	2,758	1,619	3,817	2,608	.	67.7	53.2	53.2	48.3	.
NM	1,211	1,373	1,480	1,781	1,772	57.6	51.7	58.2	46.8	52.3
NV	1,348	1,640	1,854	2,060	2,080	61.8	56.8	56.9	53.4	52.7
OH	404	418	385	439	450	55.9	55.5	59.1	53.3	61.7
OK	2,348	2,686	2,738	3,170	3,436	59.0	57.2	59.2	56.5	56.6
PA	1,143	1,266	1,395	1,348	1,226	54.7	47.7	56.4	48.9	52.2
PW	16	29	26	30	.	50.0	71.4	85.7	70.0	.
TN	4,333	5,535	5,727	6,701	6,855	60.1	54.2	59.4	52.9	50.7
TX	1,193	1,025	.	.	.	49.8	45.8	.	.	.
WV	.	.	2,315	3,710	1,526	.	.	67.4	59.0	59.5
WY	587	776	925	989	1,026	77.6	70.1	69.8	63.6	70
Total	47,773	59,817	71,264	82,391	79,903	62.1	57.2	59.9	55.0	54.9

*Passing rates are not reported for samples under 10.